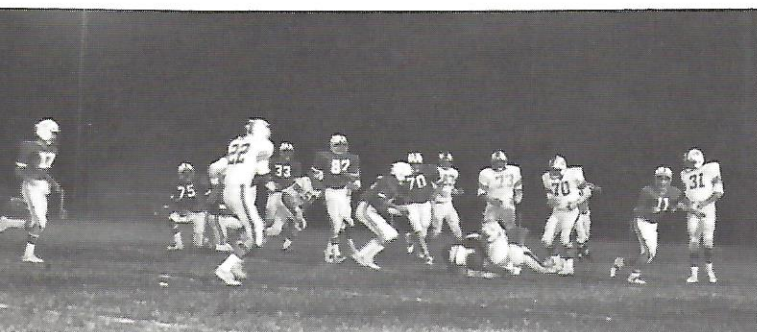
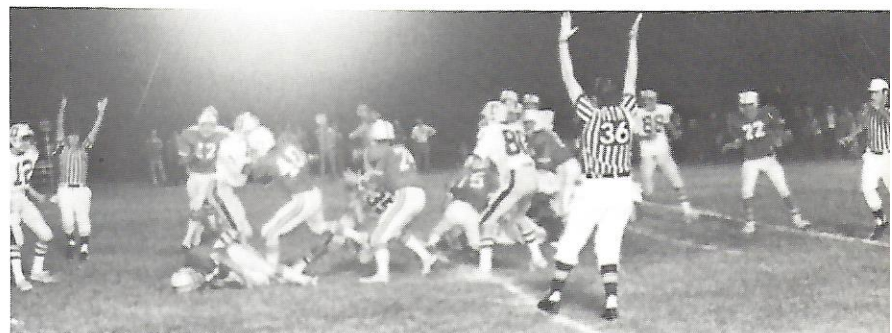
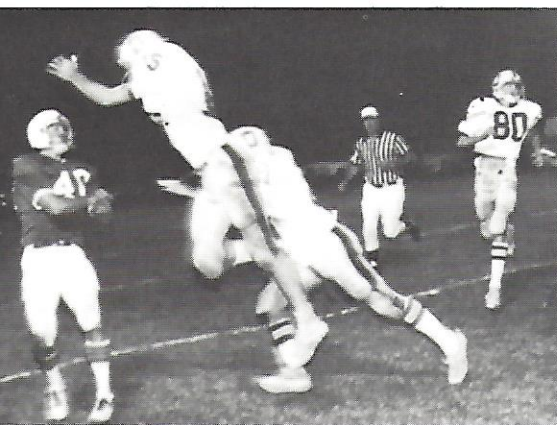


LORD BERKELEY 0
A.J.A. 20

SEA ISLAND 6
A.J.A. 38



ALLENDALE 15
A.J.A. 14

GEN HILLS 41
A.J.A. 6

DORCHESTER 0
A.J.A. 40

Catawba 6
A.J.A. 7

SHELDON 7
A.J.A. 38

Bowman 38
A.J.A. 35

MIMS 6
A.J.A. 12

PATRICK HENRY 6
A.J.A. 40

