

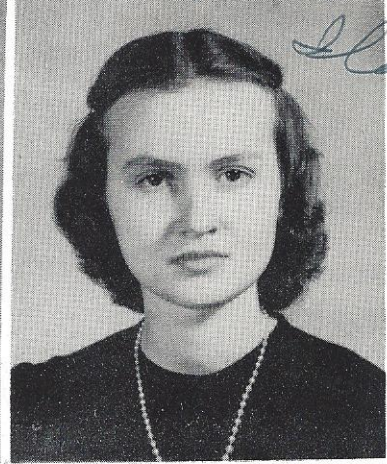
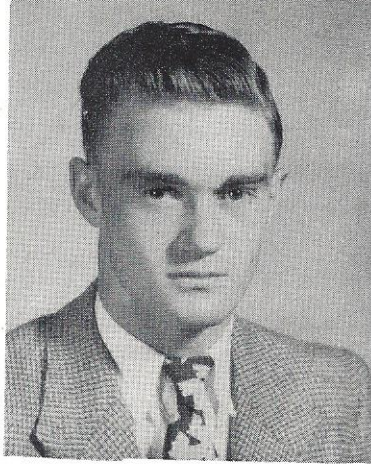
*you're a swell
guy,*

Ila Ann

Carrol Cockrell (left)

"He plays football with all his heart,
And always plays his part."

Football (3,4,5); Block Club (4,5); Glee Club (4); Student Council (5).



Armand Hare (below)

"A nut you want, a nut you see,
If it's a nut to be found, Then the nut is he."

Baseball(all 5); Block Club (4,5).



Ila Ann Cook (top right)

"What is worth doing at all
Is worth doing well."

Beta Club (3,4,5); Glee Club (all 5); Periscope Staff (4)
Dramatics Club(4); Basketball (3,4).



*you're swell
"Betty"*

Eleanor Hare (lower left)

"She smiles and the shadows depart."

J.H.A.(3,4); Junior Play (4);
Dramatics Club (4); Press Club (5).



Betty Lou Fallaw (above)

"Wise words may fall on unfruitful ground,

But kind works have no ending."

Secretary J.H.A. District #3 (4); State J.H.A. President (3,4); J.H.A. Club(3,4,5); Junior Play(4); Dramatics Club (4); Press Club(4,5); Editor of "Periscope" (5).



Mary Keller Hart (lower left)

"Her smile is sweetened by her gravity."

Transferred from Tubman High School, Augusta, Ga.

J.H.A. Aiken High School (1)
J.H.A. Harlem High, Georgia (1,2).