

Edward Shealy



Helen Shealy (right)

"Small package tho' there be,
Often contains more than one
can see."

Student Council(3); Glee Club
(all 5); Press Club(2,3,4,5);
Beta Club(3,4,5); Periscope
Staff (1).



Kathleen Shealy (above)

"A good old pal is Kat, A
good little girl is she, As full
of fun and wit as ever a girl
can be."

Glee Club (all 5); Beta Club
(3,4,5); Beta Club Vice-Pres-
ident(4,5); Student Council(3,
4).

Edward Shealy (top left)

"Tis better to say nothing
than to say too much and
mean nothing."

F. F. A. Chapter Member (3,
4,5).

Marion Shealy (below)

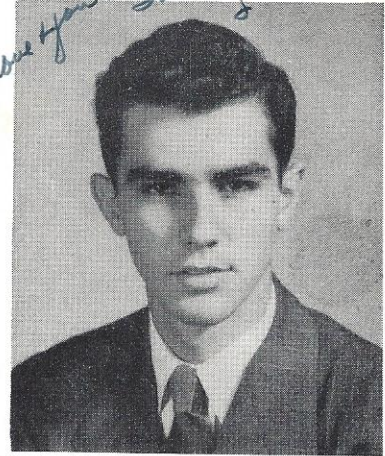
" O fertile brain and massive
heart,
He always acted well his
part.

Student Council(2,3,4); Press
Club(2,3,4); Block Club(3,4);
Class Pres.(3,4); Basketball
(2,3,4); Glee Club (all 5).

Dorothy Swygert (lower right)

"I do not know of any way so
sure of making others happy
as of being so one's self."

J. H. A. (2,3,4,5); Glee Club
(4,5).



Jimmy Simons (lower left)

"A football player, basketball
and baseball player too,
What is it he doesn't know
how to do?"

Baseball(2,3,4,5); Basketball
(2,3,4,5); Football(4,5); Block
Club (4,5).



Jimmy Simons