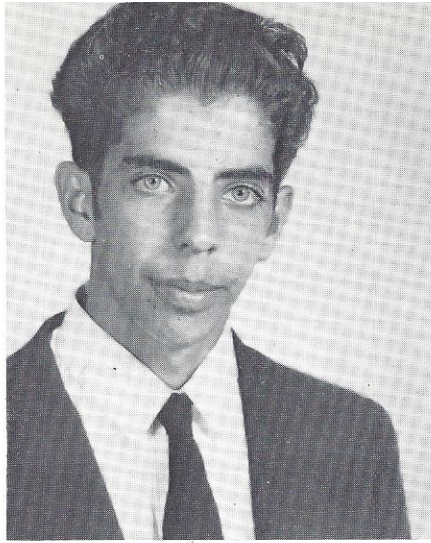
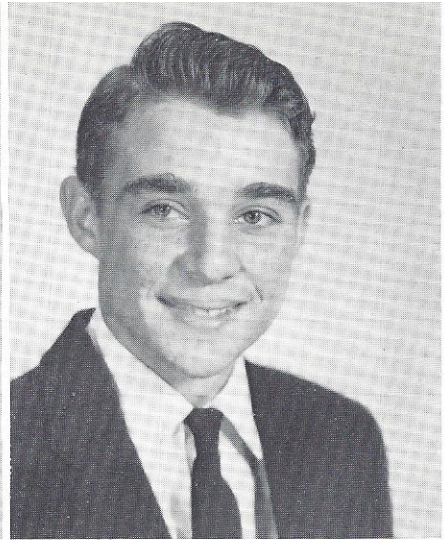


Most Successful

HIGH CHOSEN



TERRY RHETT MYERS
"Terry"

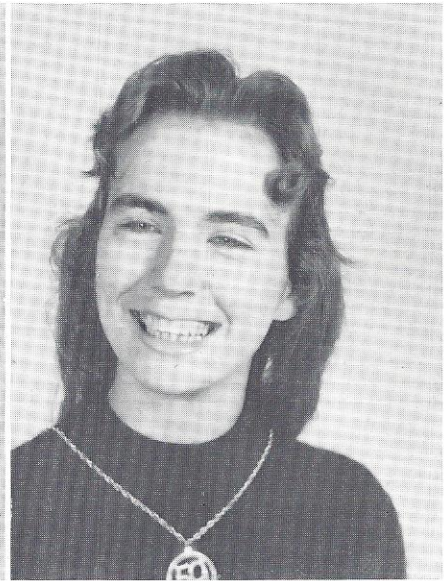


MELVILLE GALLETTY PADGETT
"Melville"

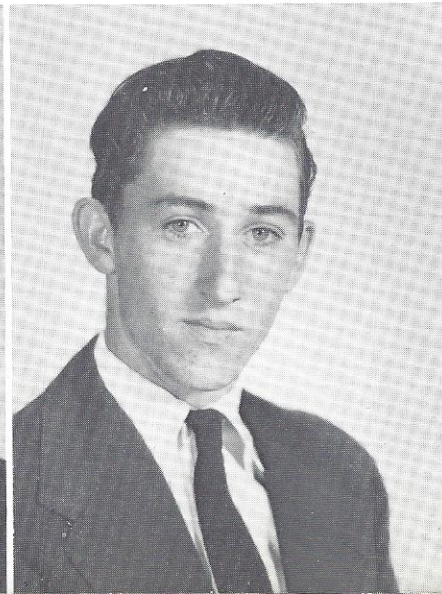
EVELYN ANN PETERS
"Ann"



ELOISE GRACE PETERS
"Grace"



ANNIE LEE PONDS
"Ginger"



HOWARD LAMAR PREACHER
"Howard"