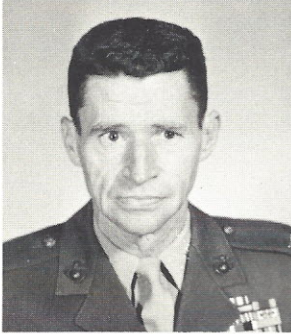
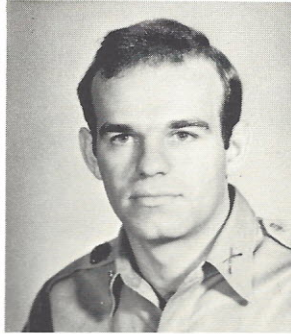


FACULTY



COL. R. M. RICHARDS
U.S.M.C.
B.S., U. S. Naval Academy
Pre-Algebra, Geometry



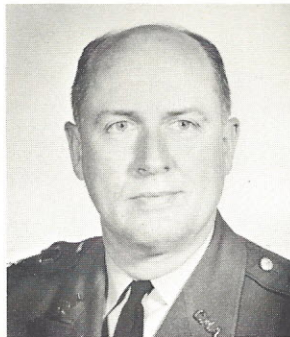
CAPT. R. H. SANDEL
B.S., The Citadel
Earth Science
Physical Science



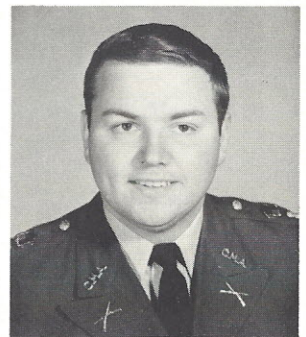
CAPT. ROY VANDEGRIFT
A.B., University of S. C.
8th Grade History
World History



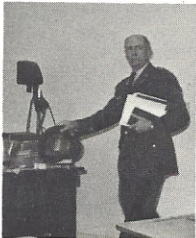
CAPT. J. H. WALLACE
A.B., Salem College
8th Grade English
English II



LT. COL. J. T. DALLAS
A.B., University of S. C.
Algebra
French



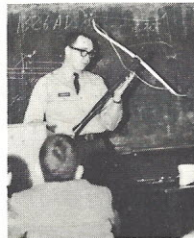
CAPT. J. E. WEBBER
B.S., Salem College
English IV, Economics
Business Law



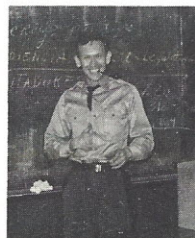
"Back, you
Animals!"



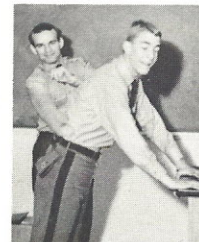
"In the beginning
there was
Beowulf."



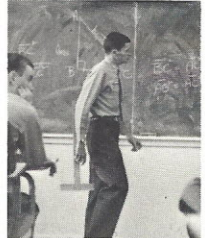
"Put the apple
back on
your head,
Liverman."



"Oh, when I think
back to my youth,
and those days of
Wine and Roses."



"For failing to
comply, twenty
lashes with a
wet noodle."



"Now in order to
use the 'T'-
Square . . ."