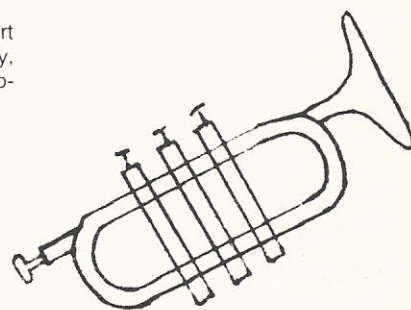


Pep to Jazz

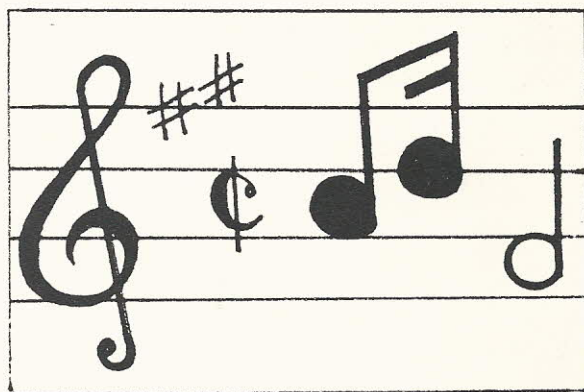
The Jazz Ensemble, which plays jazz and popular music, is a group of musically experienced cadets who worked long hours practicing more challenging music than does the regular marching band. Captain Green, the director, planned many activities including playing at a Camden Rotary Club meeting.



Jazz Ensemble
Briggs Harmon, Todd White, Henry Graham, Burt Fincher, Gregg Runyan, Kelvin O'Neil, Ted McCravy, Charles Chappell, Mark Lewis, Steve Barber, and Captain Green.



The Intermediate Band is composed of cadets who show a desire to be in the Marching Band. Members are taught how to play an instrument and the fundamentals of music and, in following years, they are placed in the marching band. The concept behind this is to improve the quality of music at CMA.



Captain Green, Ken Wallace, Lee Phillips, Scott Dykstra, Daniel Timmons, Billy Lovelace, Trip Stuckey, Steve Patterson, Eddy Kornegay, Lee Goza, Mark Williams, Johnny McCoy, and Barry Barton.

Intermediate Band.