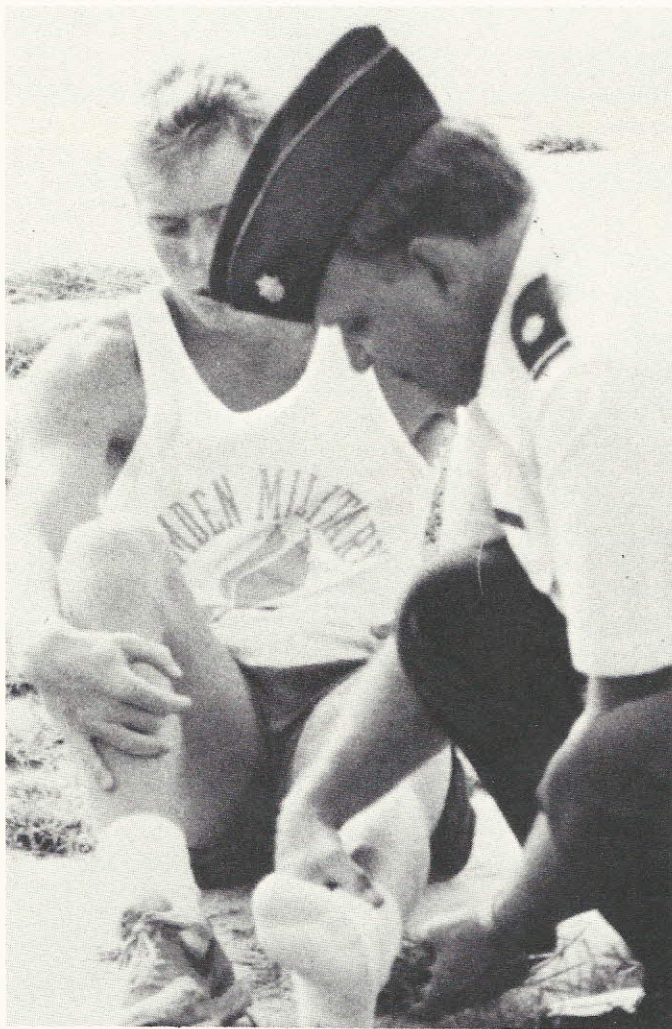


Team. Kneeling: Lathan, Scholl, Laird, Watford, Edmondson. Back: Coach LePage, Nelson, Minelli, Chestnut, Gibson, Latture.



Coach LePage tapes Allen Watford's ankle midway through the Thomas Sumter-sponsored meet.



Damon Edmondson and Todd Scholl pace the pack from the start.