

## JV Football

The 1995 JV Football Team started off the season on a winning note by defeating Heathwood Hall 16-0. This turned out to be the lone victory as the junior Spartans ended up the season with a 1 and 5 record.

The individual effort of each player was outstanding, and the team played hard in every game with several of the losses coming in the closing minutes.

Special award winners for the JV Spartans this season were James Wasgatt, Coach's Award; Delano Draine, Most Valuable Offensive Player; and Mike Valdez, Most Valuable Defensive Player.

|                 |      |
|-----------------|------|
| Heathwood Hall  | 16-0 |
| Hammond         | 0-24 |
| Cardinal Newman | 8-14 |
| Porter Gaud     | 8-36 |
| Ben Lippen      | 0-6  |
| Westminster     | 6-20 |



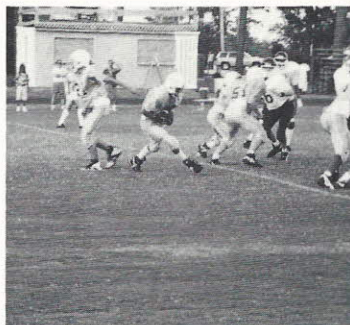
**Spartans:** KD Underwood, JE Walston, RD Dingee, NC Hanks, CJ Eadon.  
**Row 2:** KN Kingston, WD Gray, JB Wasgatt, DG Draine, MJ Valdez, CD Mitchell. **Row 3:** RN Lewis, BK Boyd, JL Bridgeman, ER Wilson, IA Nur. **Row 4:** Coach Sims, Coach Dellinger, Coach Bowles.



At halftime Coaches Dellinger and Bowles give a pep talk and lay out strategy for the second half.



Leading rusher Delano Draine breaks loose and outruns his pursuers to score 6.



Mike Valdez tucks the ball and looks for an opening in the line.

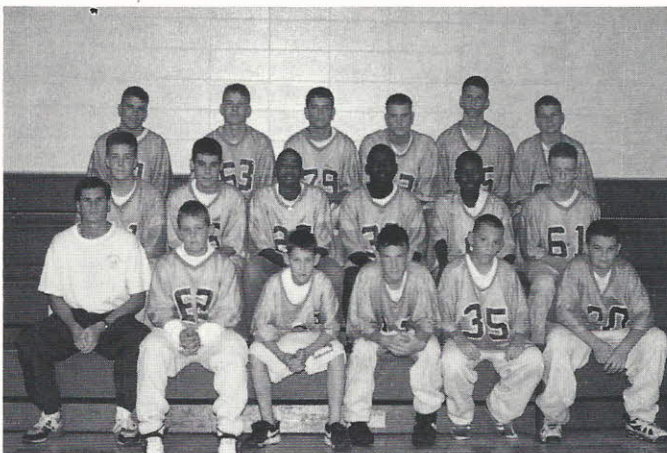


James Wasgatt sprints around right end, ready to make his down-field cut.

## JR HI Football

The Junior High Football Team learned quickly and gained valuable experience this season, finishing with a 2-2 record. Leading rusher Matt Thompson had several 100 yard games, featuring a 188 yard romp against Cardinal Newman. He also ran back two kickoffs for touchdowns. Mike Unser provided great leadership at QB, and Laniye Edwards made key receptions. Bauer, Blumer, and Crawford added offensive punch. Leading the defense was linebacker and #1 tackler DB Taylor. Workman, Richardson, Burr, and Lubich turned in strong performances on the defensive line. Special teams standouts included Salley, Jackson, MacGregor, C Edwards, Frank, I Williams, TJ Smith, and Bucher.

|                 |       |
|-----------------|-------|
| Heathwood Hall  | 8-24  |
| Hammond         | 16-14 |
| Cardinal Newman | 28-0  |
| Ben Lippen      | 8-14  |



**Spartans:** Coach Rice, DD Burr, AJ MacGregor, DR Frank, CL Edwards, RH Salley. **Row 2:** DB Taylor, MJ Unser, DC Jackson, MV Thompson, LL Edwards, RS Lubich. **Row 3:** KW Richardson, NA Blumer, WD Workman, MF Bauer, JE Crawford, IS Williams.



Coach Rice has some strong words of encouragement for his team at halftime.



Laniye Edwards strips away the ball, forcing the turnover.



Matt Thompson is tough to bring down as he struggles for extra yardage.



Bauer, Blumer, DB Taylor, Workman, and Williams converge on the runner.