

JV Football

Although the JV Football team had a break-even season, Coaches Mitchell and Sims consider it a winner. "Two-thirds of our players had never played organized football before," said new head coach Will Mitchell, "but everyone on the team gave a valiant effort. They improved every game from the beginning of the season to the end."

The high point of this year's campaign was beating Hammond, who always fields a strong team. This was the first victory against them in several seasons.

The offensive charge was led by Michael Brown, Josh Walston, and Eddy Pittman. Sparking the defense were Michael Bauer, Seth Curto, Billy Workman, Nick Blumer, Gray Curry, and John Forshaw.

Awards this year went to Nick Blumer, Most Valuable Defensive Player; Mike Brown, Most Valuable Offensive Player; Ken Underwood, Coach's Award; and Gray Curry, Most Improved Player.

Season Record: Cardinal-Newman W, Ben Lippen W, Hammond W, Ben Lippen L, Christ School L, Charlotte Country Day, L.



Spartans: AM Glass, K Underwood, BL Craven, NA Blumer, JL Zalata, SV Curto, MJ Alexander **Row 2:** Coach Mitchell, GR Curry, Jackson, JC Bellamy, ZR Barber, EC Pitman, M Brown, Coach Sims **Row 3:** JR Forshaw, SW McCall, WD Workman, M Bauer, JE Walston, M Richards



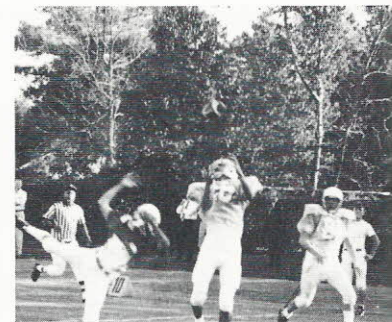
Linebacker Gray Curry leaps high going for the block as Bauer comes in to help.



Fullback Ken Underwood breaks a tackle for a long gain against Ben Lippen.



This time QB Bridgeman elects to run the ball and scampers around left end.



Jackson goes for the interception on this tipped ball that eluded the receiver.

JR HI Football

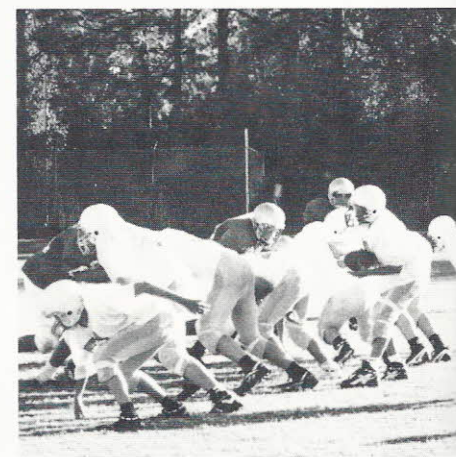
The Spartan JR HI Football Team played to a 50/50 record this season, but it was a positive situation for everyone. "It was a learning experience," said Coach Rice. "We had a lot of new kids, but they improved throughout the season and became a well-rounded team."

As highlights of the season, Coach Rice cites the outstanding play of Quarterback TJ Smith and the overall solid play of the defense. In addition, MacGregor was an effective tight end and corner back; Hogan did well at defensive end; Salley led the offense; and both Shin and Scrudato, who came to the team late in the season, became true assets.

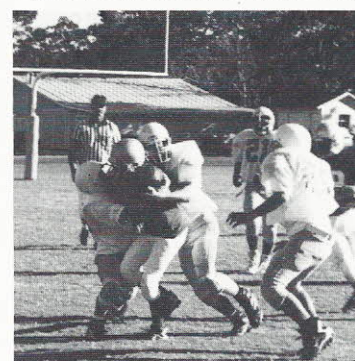
Coach Rice looks forward to having a group of players with more experience going into the 1997 campaign. Season Record: Ben Lippen L, Cardinal-Newman W, Ben Lippen L, Westminster-Catawba W.



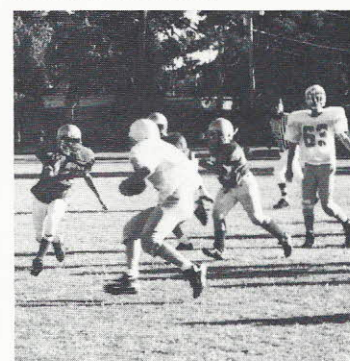
Spartans: SM Shealy, ML Sloan, TJ Smith, AJ MacGregor, JR Fox, DG Tsoukatos **Row 2:** WG Warren, C Edwards, T Shin, MS Marolf, RE Worroll, EM Weber, ME Arkel, TA Millican **Row 3:** M Harding, WA Scrudato, MA Guest, AD Hogan, C Brantley, RH Salley, EM Gillman, JC Hoffman, Coach Rice



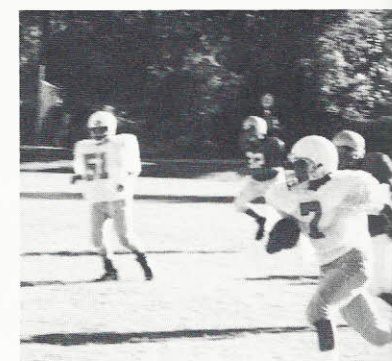
Quarterback TJ Smith prepares to put the ball in play as the offensive line does its job.



Sloan and Hogan team up to stop the runner for a very short gain.



About to run out of room, Guest has picked up good yardage on this play.



Tim Shin sprints into the open field for a long gain on this well-executed maneuver.