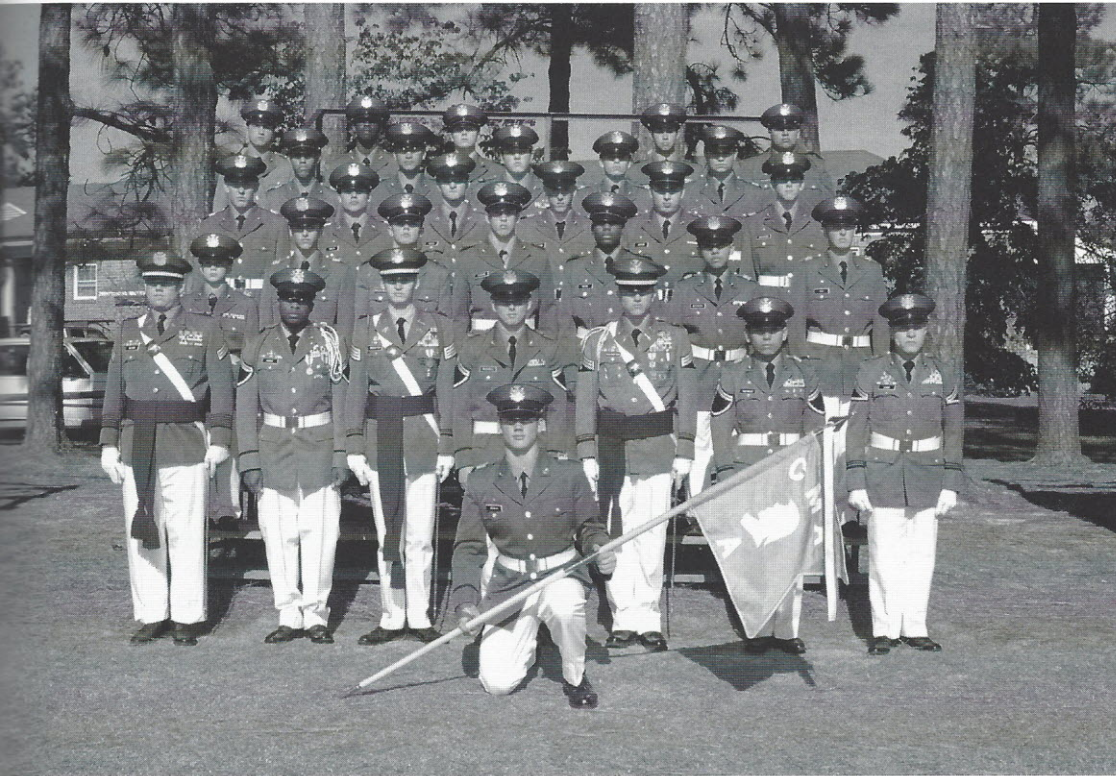
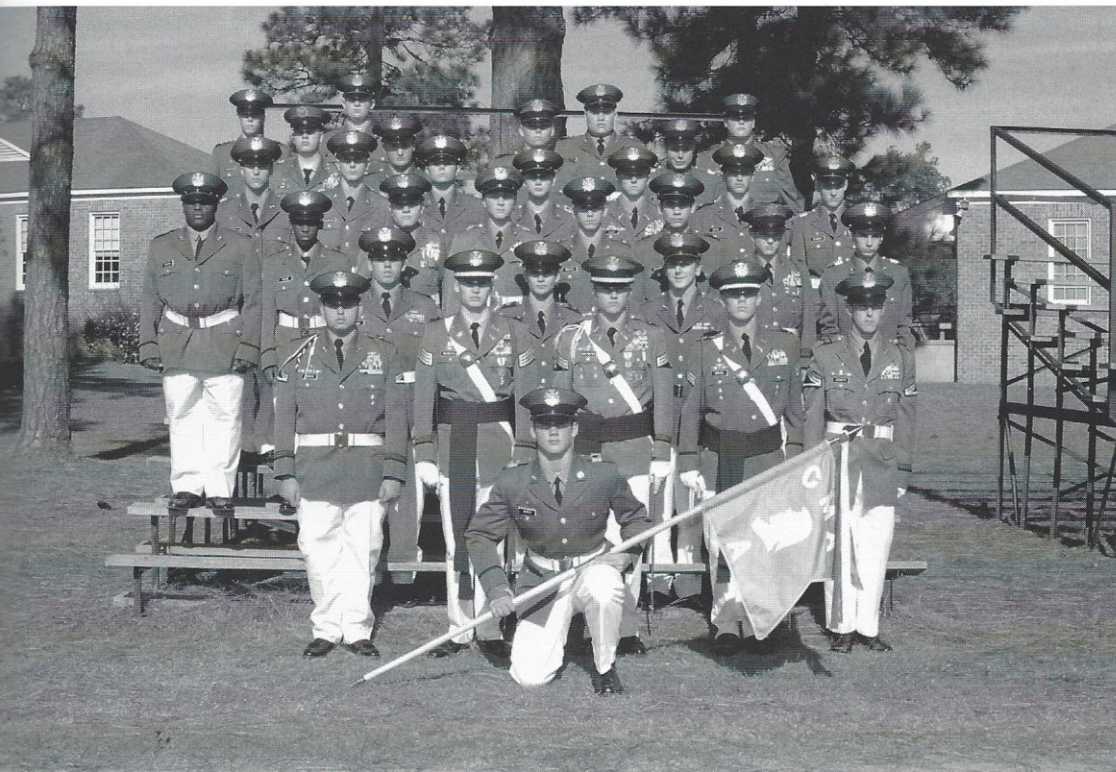


# First Platoon



Guidon CM Zemla **Row 2:** 2LT NT Allen, 1SG LS Banks, CPT ML Wooditch, 1LT LW Rostmeyer, CA McFarlin, JA Land **Row 3:** TK Sitler, RF Ruplinger, JA Raczkowski, JA Fugate, TR Boone, C Desouza, TA Ray **Row 4:** AL Henley, DM Smith, MB Smith, MD Griffin, IA Jurow, MJ Andrews **Row 5:** MR Burlley, AA Melendez, BA Nelson, DW Sigmon, TG Andreolas **Row 6:** JC Ferguson, J Cummings, LC Decker, JW Browder, MC Calcasacco

# Second Platoon



Guidon CM Zemla **Row 2:** SFC MA Moawad, CPT ML Wooditch, 1LT LW Rostmeyer, 2LT KB Owens, SFC RL Lockett **Row 3:** JT Hough, PB Jaco, MA Behrle **Row 4:** RD Nabors, EL Aiken, ES Land, MT Land, RM Hughes, J Zuluaga, AW Smith, CA Yepez **Row 5:** Tinker, SS Mommerency, LK Bradham, JW Moore, DM Foley, CA Smith, TB Clinker **Row 6:** SE Shockley, ST Garrett, TM Latham, JA Cardiel **Row 7:** EA Chamorro, JI Hansil, JM Idarraga, ER Woodruff