

JOSEPH P. GAMBLE—Arlington, Va.

When you first meet Joe, you instantly recognize him as a fellow with a ready smile and a genuine friendliness. When you work with him you realize that he is the possessor of a quiet efficiency which makes even the most difficult problems simple. Academics were "fruit" for Joe, so he had plenty of time to indulge in Dixieland jive or bull-shooting, but he was not adverse to an occasional siesta on his bunk. This was Joe, ever a gentleman and a fine friend. He will do well.

41-42—Pvt. Co. "C."

42-43—Cpl. Co. "B" — Sgt. Co. "C" — Non-Comm. Club.

43-44—Master Sgt. Staff — Non-Comm. Club — Literary Society — Bugle Staff — Rebel Staff — Block "C" Club — Football Mgr.

44-45—Lt. Adj. Staff — Staff — President Literary Society — Cross Sabre Club — Block "C" Club — Ed. Bugle Staff — Rebel Staff — Glee Club.



MARK B. GLASCOCK—Marshall, Va.

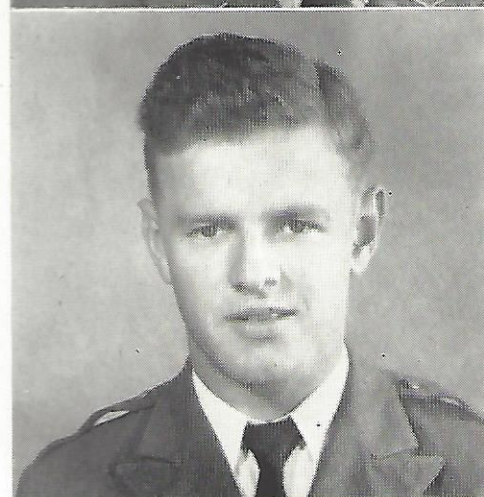
Call it blind devotion if you like, but "Buddy" was always in there pitching for the things he believed in. To him there was just one football team, just one Marshall, and just one "O.A.O." Each fall found him in there fighting hard for a victory on the gridiron. His amiability and enthusiasm could not go unrewarded—a host of friends, now and always, bespeak a personality that will carry "Buddy" far in whatever he may do.

41-42—Pvt. Co. "B" — President Freshman Class.

42-43—Cpl. Co. "B" — Football — Non-Comm. Club — Literary Society — President Sophomore Class.

43-44—Lt. Co. "A" — Football — Block "C" Club — Cross Sabre Club — Basketball — Literary Society — President Junior Class.

44-45—Capt. Co. "B" — Football — Block "C" Club — Cross Sabre Club — Honor Council — Literary Society.

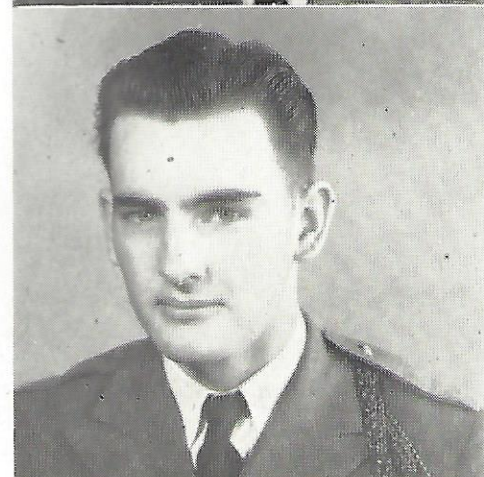


EDWARD L. GLASS—Spartanburg, S. C.

"Hooray for Spartanburg!" These words of praise were often heard from the "South's side" of the room when the "bull session" got around to the relative merits of home towns. "Eddie" has been handling the subjects for two years and the women have been handling him even longer, but none have been able to dent his calm manner. Carefree, happy-go-lucky, sharp-witted, "Eddie" is sure to gain his place in whatever service he is called.

43-44—Pvt. Co. "A" — Literary Society.

44-45—Cpl. Co. "A" — Flying Club — Bugle Staff — Literary Society — Non-Comm. Club — Rifle Team.



JEROME C. GRAY—Savannah, Ga.

At first glance, Jerry might be taken for a country product, but a few minutes conversation with him will reveal that he hails from the wilds of Savannah. He had his "run ins" with the academic department occasionally, but they couldn't stop Jerry. A lover of precision, he could be found brushing his teeth at nine o'clock every night. How is he to achieve fame? Ha! Dear readers, his fame lies in this biography—in his efforts lie his renown.

41-42—Pvt. Co. "B."

42-43—Pvt. Co. "B" — Crack Piat.

43-44—Cpl. Co. "B"—Non-Comm. Club.

44-45—Cpl. Co. "B" — Non-Comm. Club — Glee Club.

24