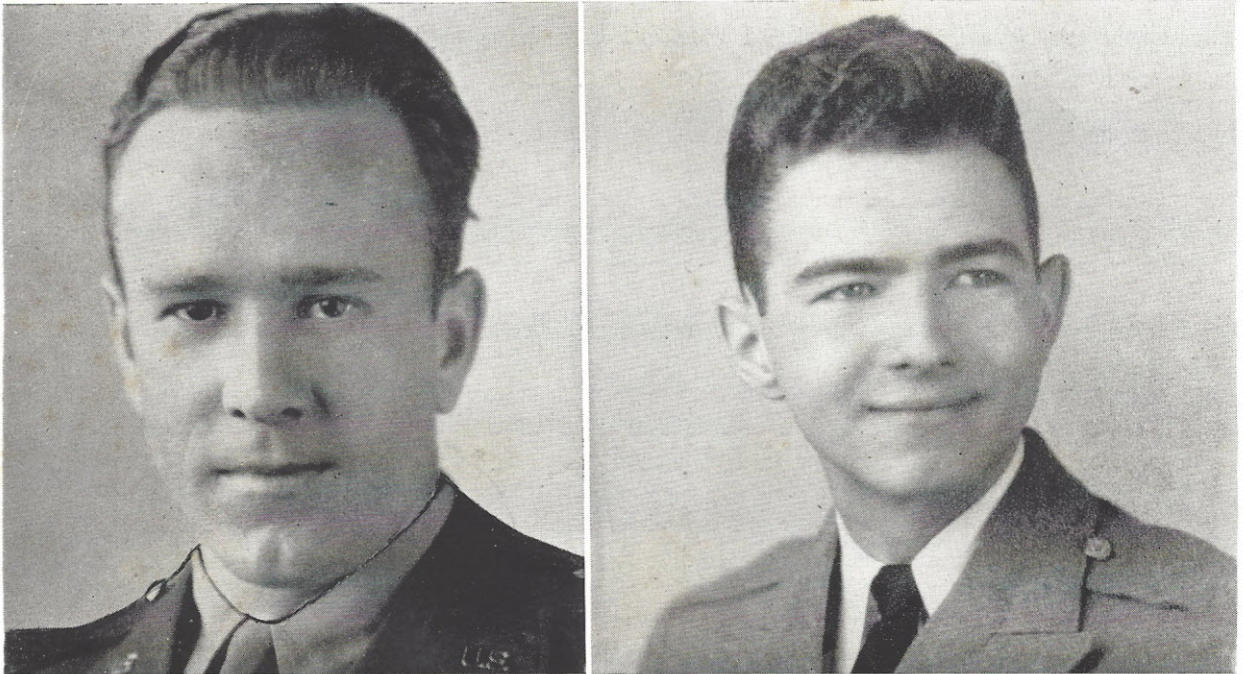


DEDICATION



It is with sincere pride and gratification that we dedicate this, The 1946 REBEL, to Captain M. C. Way, Jr., of Holly Hill, South Carolina, and to Cadet Corporal Marion Williamson, of Columbia, South Carolina. Captain Way was a member of the Carlisle Faculty for four years. He taught mathematics and the science of pre-flight. Captain Way was instrumental in the installation of the pre-flight course at Carlisle.

Cadet Williamson was a member of the corps of cadets for two years during which time he obtained the rank of cadet corporal. He was a member of the Senior Class, a member of the flight class, and a number of other school activities.

"The Lord is my shepherd; I shall not want." (Psalms)