

JACKSON BRAGG "Jack"
 WELCH, WEST VA.
 1954-55—Pvt. Co. A; P.F.C. Co. A; Non-Com Club.
 1955-56—Color Sgt. Battalion Staff; Non-Com Club; Varsity
 Football; Block "C" Club.

BENNIE S. BRAWLEY, JR. "Ben"
 COLUMBIA, S. C.
 1951-52—Pvt. Co. Band
 1952-53—Pvt. Co. Band.
 1953-54—P.F.C. Co. Band; Cpl. Co. Band; Non-Com Club;
 Flight Club; Library Club.
 1954-55—Cpl. Co. Band; Flight Club; Library Club.
 1955-56—Sgt. Co. Band; Library Club.

ROGER D. BROWN "Skip"
 BATH, N. Y.
 1950-51—Pvt. Co. C; Honor Roll.
 1951-52—Pvt. Co. C.
 1954-55—Pvt. Co. Band; Orchestra.
 1955-56—Pvt. Co. Band; Orchestra.

LAURENCE E. BYRNE "Larry"
 BLUE RIDGE SUMMIT, PA.
 1954-55—Pvt. Co. C.
 1955-56—Pvt. Co. C.

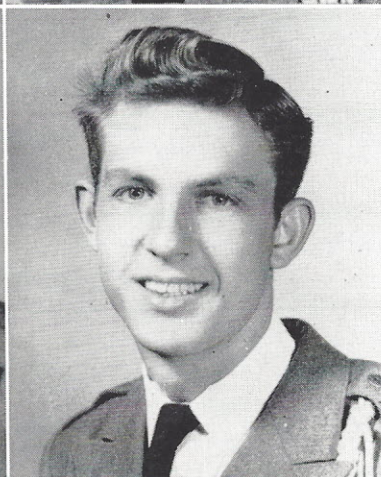
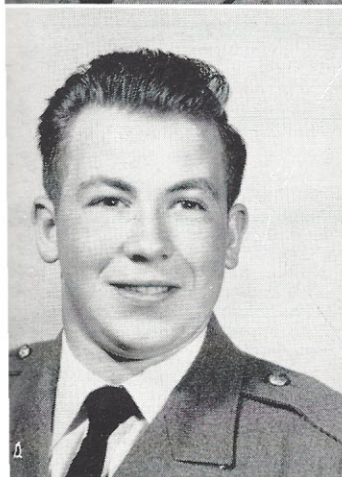
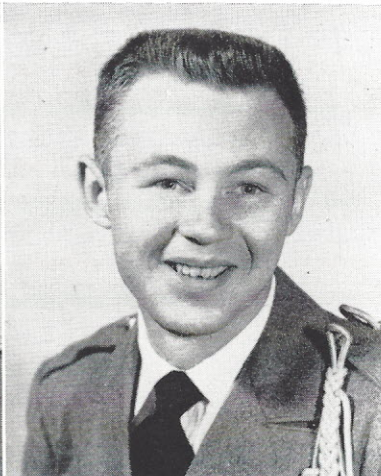
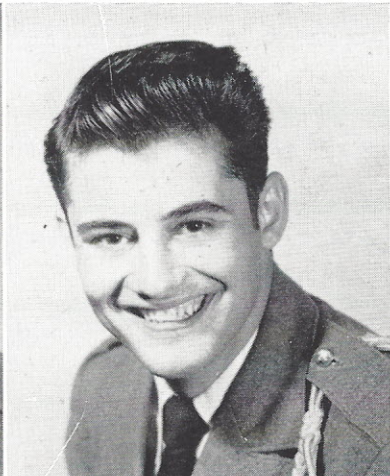
THOMAS B. CALLAHAN "Toe"
 GASTONIA, N. C.
 1954-55—Pvt. Co. A; P.F.C. Co. A; Non-Com Club; Varsity
 Football; Varsity Basketball; Block "C" Club.
 1955-56—Cpl. Co. A; Non-Com Club; Varsity Football; Varsity
 Basketball; Varsity Baseball; CERO Staff; Block "C" Club.

WILEY W. CLAY "Buck"
 ROCKY MOUNT, N. C.
 1953-54—Pvt. Co. Band; Orchestra; Flight Club; Glee Club;
 Intramurals.
 1954-55—P.F.C. Co. Band; Cpl. Co. Band; Non-Com Club;
 Orchestra; Glee Club; Intramurals.
 1955-56—1st Sgt. Co. Band; Non-Com Club; Orchestra; Cheer-
 leader; Block "C" Club; Intramurals.

Jack Bragg

Ben Brawley

Roger Brown



Larry Byrne

Tom Callahan

Wiley Clay

S
E
N
I
O
R
S