

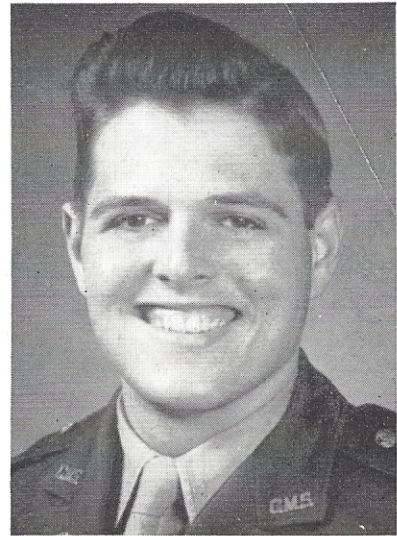
Officers

BILL BETHEA *Editor-in-Chief*
 CHARLES STOVER *Assistant Editor*
 CHARLES WILSON *Managing Editor*
 GRAHAM TOMLINSON *Business Manager*
 JEFF SIRMANS *Art Editor*

As the REBEL goes to press, I wish to extend my sincere thanks and appreciation to my staff for their untiring efforts towards the completion of this year's annual.

We hope that in the reading of this yearbook you will find your days at Carlisle portrayed completely, and in a way that you will enjoy and remember for years to come.

BILL BETHEA,
Editor-in-Chief.



CAPT. WILLIAM RISHER
Faculty Advisor



First Row, Left to Right: TOMLINSON, STOVER, BETHEA, WILSON, C. H., CLANCY. Second Row: WINTERS, McDONALD, LONG, J. C. Absent from Picture: SIRMANS, OLSEN.