

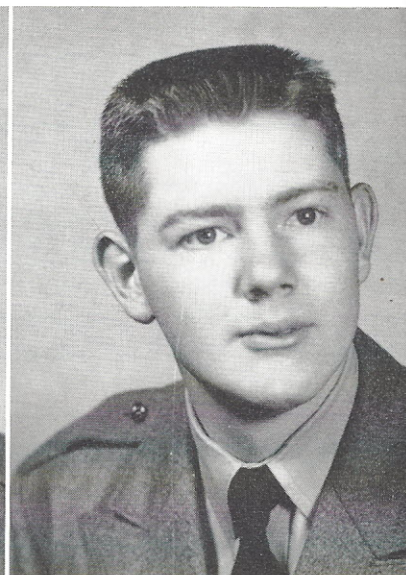
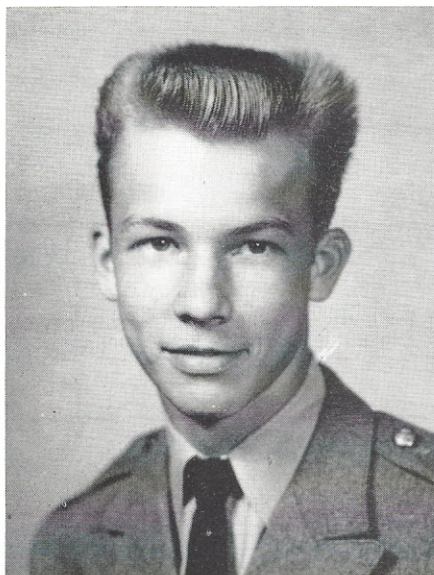
SENIOR CLASS

RICHARD L. GAUSE

"LARRY"

JACKSONVILLE, FLA.

1953-54—Pvt. Co. B. 1954-55—PFC Intramural Staff.
1955-56—Pvt. Co. B. 1957-58—Pvt. Co. A.



MELVIN D. GIBSON

"ROAD KNIGHT"

SHELBY, N. C.

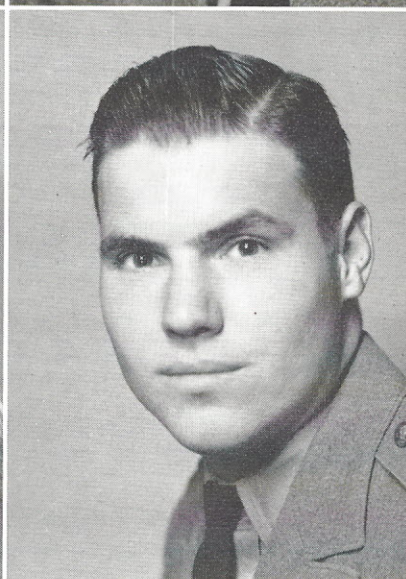
1956-57—Pvt. Co. B. 1957-58—Cpl. Co. B; Non-Com Club.

BRUCE T. GODDARD

"SINATRA"

SAVANNAH, GA.

1952-53—Pvt. Co. D Flight Club. 1953-54—Pvt. Co. D; Flight Club. 1954-55—PFC Flight Club; Non-Com Club. 1955-56—Cpl. Co. C; Flight Club; Non-Com Club. 1956-57—Lt. Co. C; Cross Saber Club. 1957-58—Lt. Co. B; Cross Saber Club; Block "C" Club; Cheerleader.



RAY A. GORDON

"RAY"

SOUTH HOUSTON, TEXAS

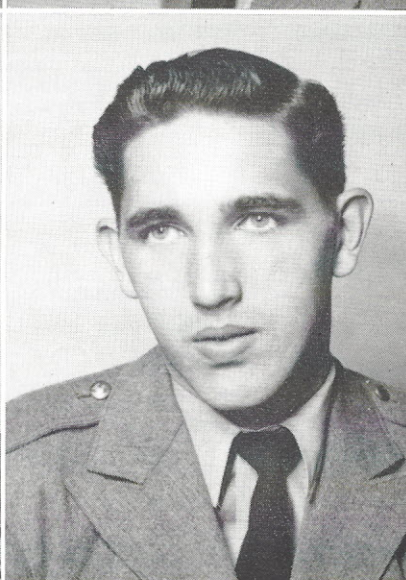
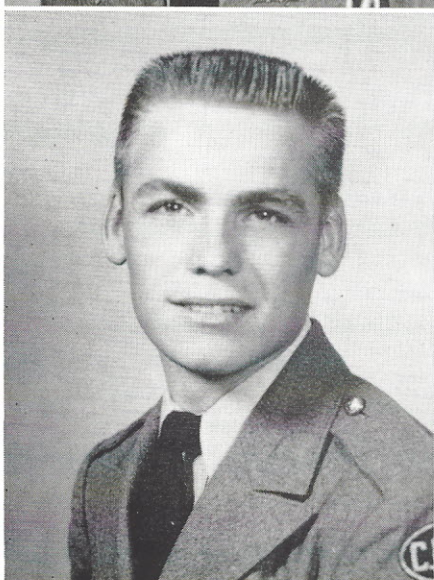
1952-53—Pvt. Co. Band. 1953-54—Pvt. Co. Band. 1954-55—Pvt. Co. Band; PFC Co. Band; Non-Com Club. 1955-56—Cpl. Co. Band; Non-Com Club. 1956-57—Cpl. Co. A; Pvt. Co. A; Bugle Staff; Library Club; Manager of Orchestra. 1957-58—Pvt. Co. A; Bugle Staff; Library Club.

ROBERT V. GRAHAM

"BULL DOG"

ELLOREE, S. C.

1954-55—Pvt. Co. D; PFC Co. D; Non-Com Club Tumbling Team; Model Airplane Club. 1955-56—Cpl. Co. D; Barbell Club; Non-Com Club; Tumbling Team. 1956-57—Cpl. Co. D; Non-Com Club; Tumbling Team. 1957-58—Cpl. Co. C; Non-Com Club.



RAYMOND F. HARRIS

"PETE"

HARTSVILLE, S. C.

1955-56—Pvt. Co. B. 1956-57—Pvt. Co. A. 1957-58—Pvt. Co. A.