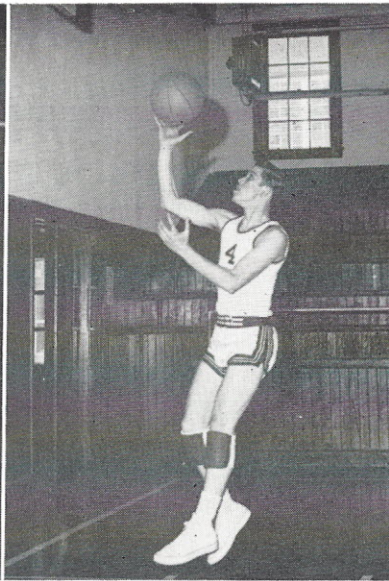
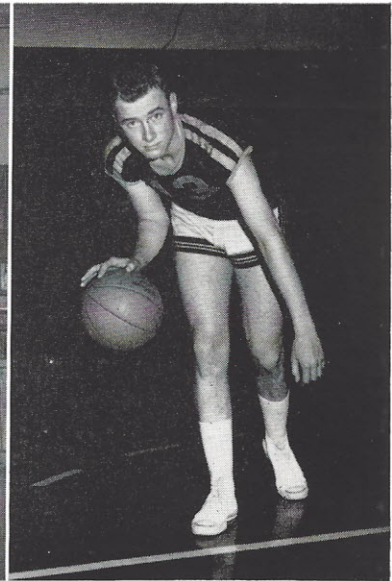




MIKE GAUTHIER



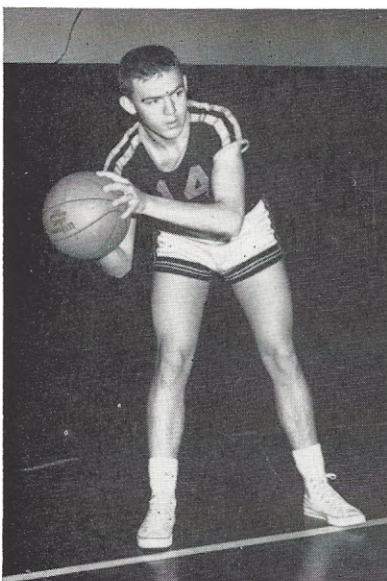
RALPH BERASTAIN



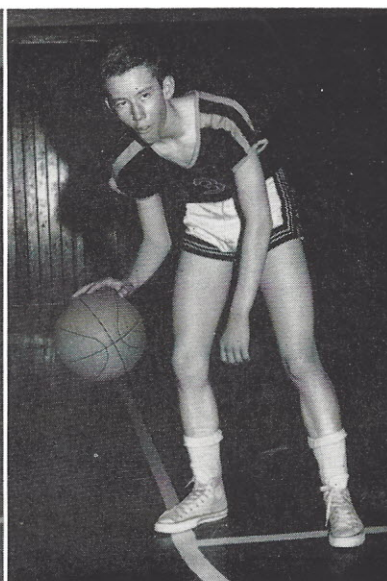
JOHN MOORE

### SCOREBOARD

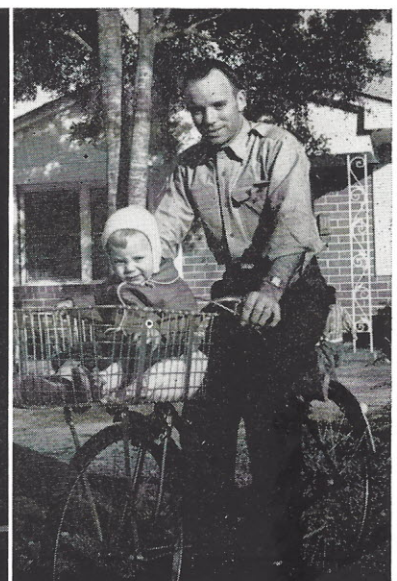
C. M. S. . . . . 46	Estill . . . . . 28	C. M. S. . . . . 26	Sumter . . . . . 57
C. M. S. . . . . 63	Camden . . . . . 40	C. M. S. . . . . 58	Orangeburg . . . . . 62
C. M. S. . . . . 45	Bishop-England . . . . 55	C. M. S. . . . . 43	Jefferson A. C. . . . . 46
C. M. S. . . . . 37	Beaufort . . . . . 35	C. M. S. . . . . 71	Bluffton . . . . . 43
C. M. S. . . . . 60	Camden . . . . . 32	C. M. S. . . . . 42	Checker Cab Co. . . . 53
C. M. S. . . . . 49	Jefferson A. C. . . . . 40	C. M. S. . . . . 78	Richmond A. . . . . 76
C. M. S. . . . . 60	Richmond A. . . . . 73	C. M. S. . . . . 35	Eau Claire . . . . . 44
C. M. S. . . . . 61	Beaufort . . . . . 62	C. M. S. . . . . 47	North Augusta . . . . 52
C. M. S. . . . . 46	Checker Cab Co. . . . 52	C. M. S. . . . . 53	Bishop-England . . . . 43



WHEELER GREEN



CHARLIE FOSS



COACH PHILLIPS