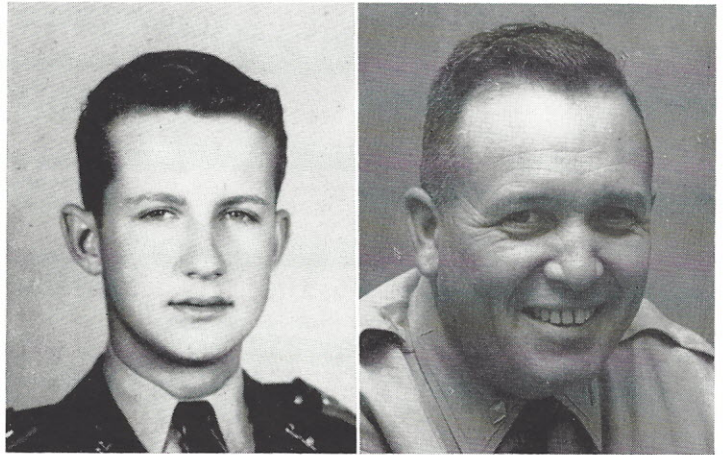


EVERLY
Chairman

MAJOR THOMPSON
Advisor



THE CROSS SABRE CLUB

The Cross Sabre Club consists of the commissioned officers. In the clubhouse, they may fix meals, watch television, play cards, or in general pass the time away in a fashion and style not everyone here is used to.

Front: Lane, Everly, Way, Poole. *Middle:* Fleming, Martschink, Ayars, Murray, Hilton, Tucker, Bewley. *Rear:* Kearse, Ellenburg, Patterson, Brooks, Pase.

