

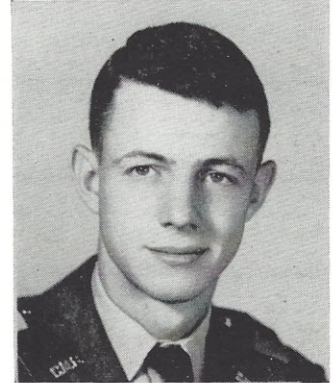
GUS MARTSHINK
Drill Team Leader



MISS LINDA POSEY
Sponsor



GROVER SHULER
Guide



THE RISHER RIFLES

The Risher Rifles have progressed very rapidly since their start two years ago. This year they have worn new uniforms to the parades and ceremonies where they have performed.

We salute this body of men for a job well done.

Martschink (Commander). Members: Shuler, Molony, Hughes, Sumner, Christenson, Miller, Watson, B., Watson, G., Messick, Roye, Hamilton, W. C., Hamilton, R. W., Merritt, Leitch, Gramling, Dunn, Sheils, Stone, Black, Taber, Railsback, Sawyer, Horton, Petersime, Kemp, Alexander, H. L., Alexander, L. E., McLane, Gaines, Beale, G. P., Beale, W. G., Lindsay, Chandler, Lowry, Cress, Patterson, T. L., York, Bennett, H. T. Warr, Hambright.

