

JOHN W. FISCHER "Fish"  
 "One who is slow is never fast, but is always right."  
 1962-63—Pvt. Co. C. 1963-64—Pvt. Co. C. 1964-65—Cpl. Co. C; Glee Club.

ALAN FREEMAN "Alan"  
 "How about it Fred!"  
 1963-64—Pvt. Co. A; Pfc. Co. A; Football; Track; Cross Country. 1964-65—Sgt. 1/c Staff; Color Guard; Football; Track; Photo Club; Bugle Staff; Rebel Staff; Senior Superlative.

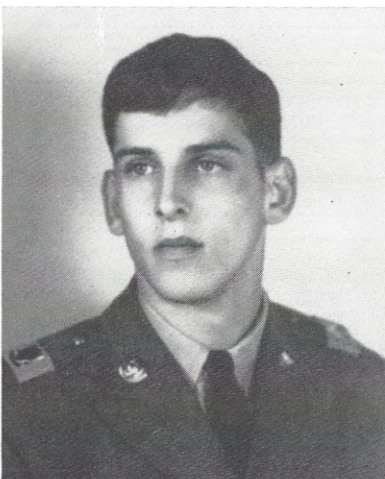
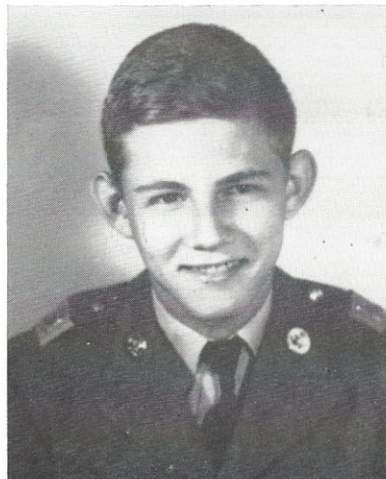
## SENIORS

JAMES MILTON FREEMAN, JR.

"Jimmy"  
 "Soft, sweet things with a lot of fancy dressing . . . that's what a little boy likes to eat and a grown man prefers to marry."  
 1961-62—Pvt. Co. C; Track; Cross Country. 1962-63—Pvt. Co. C. 1963-64—Pvt. Co. C; Pfc. Co. B. 1964-65—Sgt. Co. B; Pvt. Co. B.

BILL N. GARBINI

"Bini"  
 "Love is the effort man makes to be satisfied with one woman."  
 1963-64—Pvt. Co. A; Pfc. Co. A; J.V. Football; Football; Basketball; Track; Block "C" Club; Barbell Club. 1964-65—Sgt. 1/c Co. A; Football; Basketball; Baseball; Senior Superlative; Block "C" Club; N.C.O. Club.



PHILIP RUSE GAUDREAU "P. R."  
 "If I can't do it, Brian can!"  
 1960-61—Pvt. Co. D; Pvt. Co. C; Cheerleader. 1961-62—Pvt. Co. C; Track; Ind. Competition; Color Company. 1962-63—Pvt. Co. B; Track; Ind. Competition; Barbell Club; Drill Team; CERO Staff. 1963-64—Pvt. Co. B; J.V. Football Track; Ind. Competition; Color Co. 1964-65—Pvt. Co. A; Drill Team.

ROBERT DUDLEY GIBSON "Dud"  
 "Simple men admire studies; wise men use them."  
 1963-64—Pvt. Co. Band; Pfc. Co. Band; Brigadiers. 1964-65—Training Cadre; Sgt. Co. Band; Supply Sgt. Co. Band.