

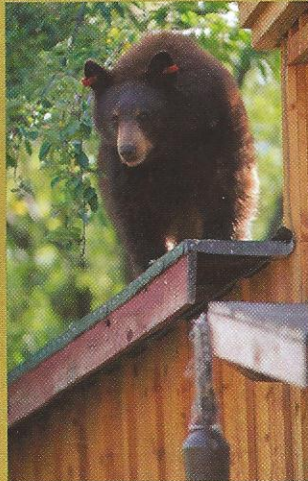
# Sci-Tech

▼ U.S. astronaut Peggy Whitson is the first female commander at the International Space Station.



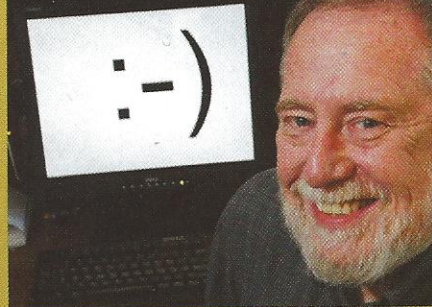
© Yuri Kochetkov/epa/Corbis

Getty Images



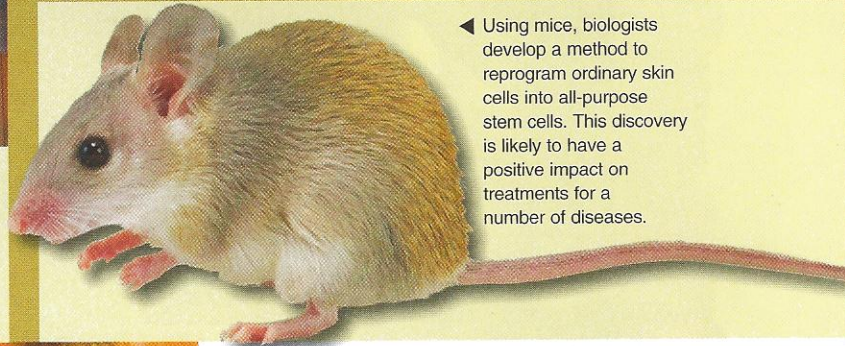
▲ Black bears make headlines in Utah, Wyoming and New Mexico as park rangers and wilderness homeowners report raids on backpacks, tents, trash cans and even kitchens.

AP Photo/Gene J. Puskar



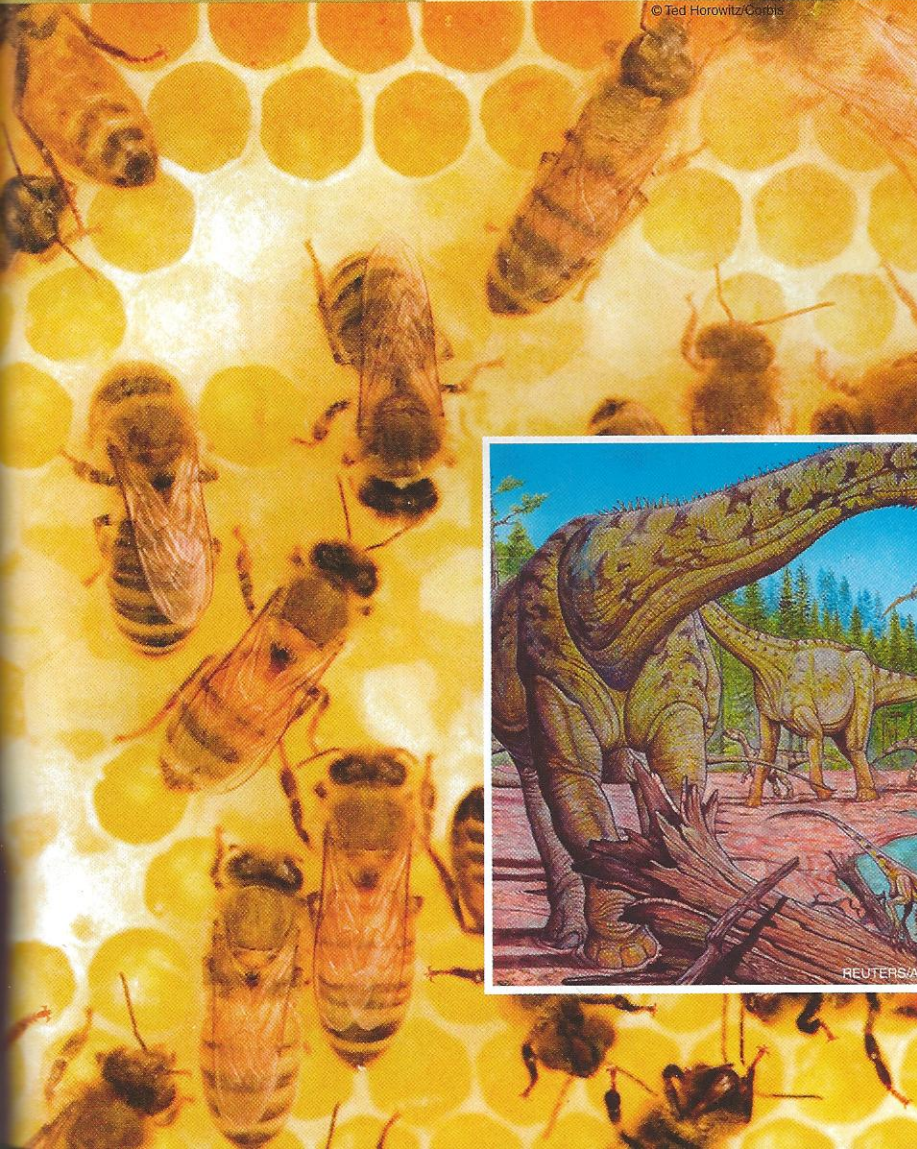
◀ The digital smiley face celebrates its 25th birthday. Its inventor, Carnegie Mellon professor Scott E. Fahlman, first used the icon on an electronic bulletin board in 1982.

Getty Images/Dorling Kindersley



◀ Using mice, biologists develop a method to reprogram ordinary skin cells into all-purpose stem cells. This discovery is likely to have a positive impact on treatments for a number of diseases.

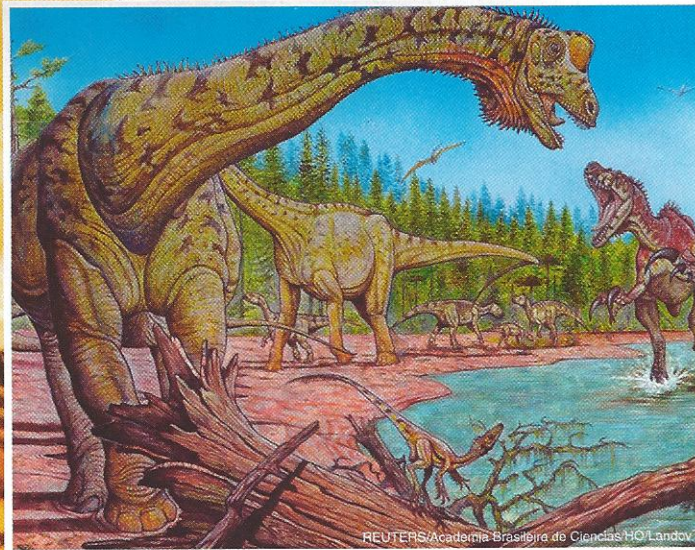
© Ted Horowitz/Corbis



◀ Crops are threatened when honeybee colonies in the U.S. and Europe suffer from Colony Collapse Disorder, losing up to 70 percent of their bees due to unknown causes.

Getty Images/Science Faction

▶ In a medical experiment, salmonella germs take a ride on the space shuttle. When they return to Earth, the germs are far more lethal than their earthbound counterparts.



REUTERS/Academia Brasileira de Ciências/HO Landov

◀ An excavation site in Argentina yields the fossilized remains of a previously unknown species of dinosaur, the *Futalognkosaurus dukei*, measuring more than 105 feet.