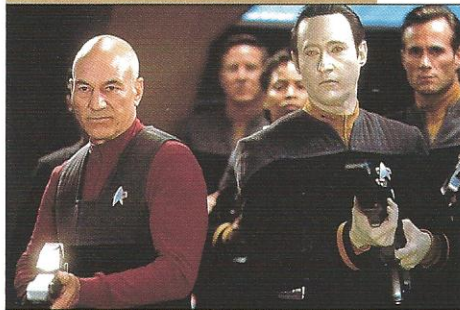
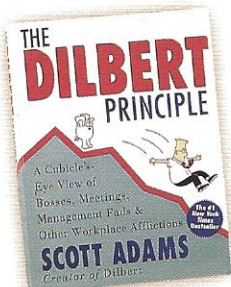


# ENTERTAINMENT



Patrick Stewart (left) and Brent Spiner (right) star in *Star Trek: First Contact*, a movie featuring characters from the TV show "Star Trek: The Next Generation."



Scott Adams' *Dilbert*, the comic strip about office politics, captures the nation's imagination. In book form, *The Dilbert Principle* becomes a national best-seller.

20th Century Fox from Shooting Star

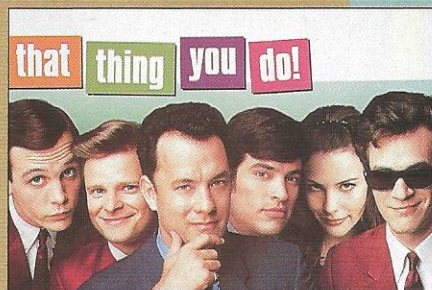


Actors Winona Ryder and Daniel Day-Lewis star in *The Crucible*, which opens in December. The screen adaption of Arthur Miller's famous play about the Salem witch trials is written by Arthur Miller himself.

Drew Carey (left) finds TV stardom during the second season of ABC's "The Drew Carey Show," a zany sit-com about working-class characters in Cleveland, Ohio.



Warner Bros. TV from Shooting Star



20th Century Fox from Shooting Star

Academy Award-winning actor Tom Hanks' first effort at directing receives critical praise when *That Thing You Do!*, a movie about the meteoric rise and fall of a 1960s rock band, opens in October.

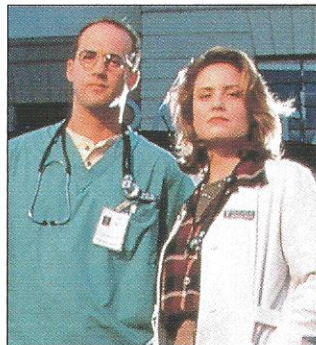
## flash

Tom Cruise stars in *Jerry Maguire*, a romantic comedy about a sports agent who decides to change his shallow ways, and spends the rest of the movie trying to regain his success. It is a breakthrough role for Cruise, who is normally depicted as a cocky winner.

To honor the 20th anniversary of its release, producer George Lucas issues a "remade" *Star Wars*, with new scenes, computerized special effects and souped-up animation. Lucas' grand plan calls for a nine-film cycle, including prequels.

English actor/director Kenneth Branagh plays Hamlet in his star-studded remake of Shakespeare's classic. Despite running four hours, the movie is a critical and box-office success.

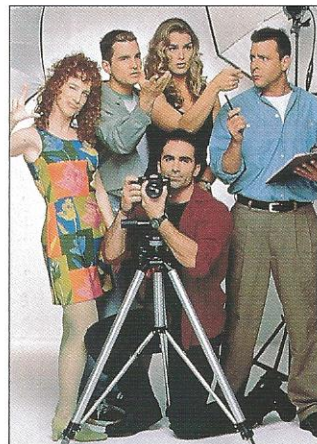
NBC's Thursday night drama "ER" features television's first HIV-positive prominent character. Jannie Boulet, a physician's assistant played by Gloria Reuben, is relatively open about her condition and helps confront the stigma of AIDS.



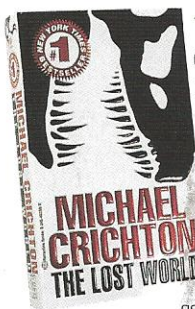
NBC from Shooting Star

Sherry Stringfield, Dr. Susan Lewis on NBC's "ER," leaves the show at the peak of her character's popularity. In her final episode, when Dr. Mark Greene, played by Anthony Edwards, declares his love for Susan, the show gamers its highest ratings ever.

Model Brooke Shields (center) moves to television in NBC's "Suddenly Susan," a sit-com premiering in September. Shields plays a columnist opposite magazine editor Judd Nelson (far right).



NBC from Shooting Star



Author Michael Crichton publishes *The Lost World*, a sequel to *Jurassic Park*, the colossal novel and movie. The new book promises to generate just as

much hype, with a movie already in the works.