

POWELL



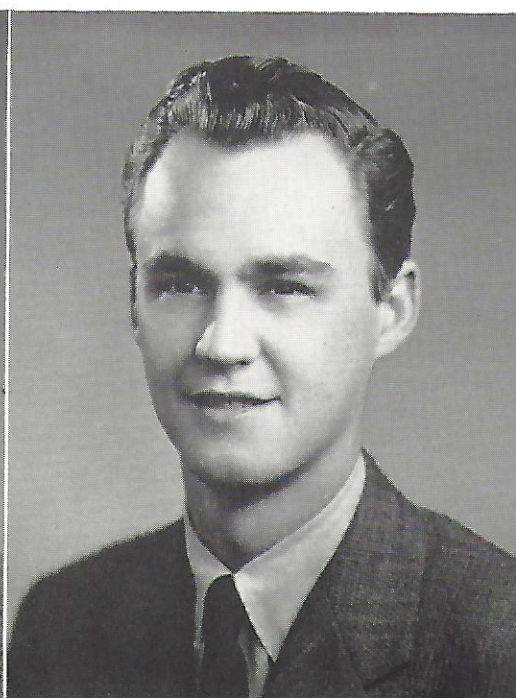
P. RANKIN



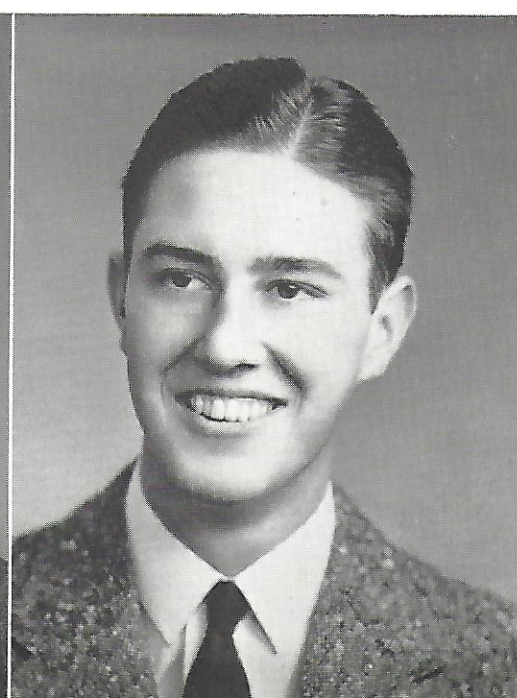
R. RANKIN



RHYNE



ROGERS



ROWLAND

DAVID VIRGIL RHEA  
GREENEVILLE, TENN.

*B.S. in History*

Glee Club (1, 2, 3, 4), Vice-President (3), Executor (4); Philanthropic Literary Society; Beta Gamma Phi; Phi Mu Alpha; Historian; Captain R. O. T. C.

BOYCE HENKEL RHYNE  
BESSEMER CITY, N. C.

*B.S. in Physics and Psychology*

Cross-Country (1); Spanish Club; Camera Club (1, 4), President (4); Assistant in Physics.

STEWART L. ROGERS,  $\Sigma$  A E  
GREENSBORO, N. C.

*B.S. in Political Science*

Golf (3); Spanish Club; "D" Club; Assistant in Political Science.

H. CARL ROWLAND, B  $\Theta$  II  
CHARLOTTE, N. C.

*B.S. in Business and Music*

Drum Major (2), Head Drum Major (4); Concert Band (2, 3, 4); Phi Mu Alpha.