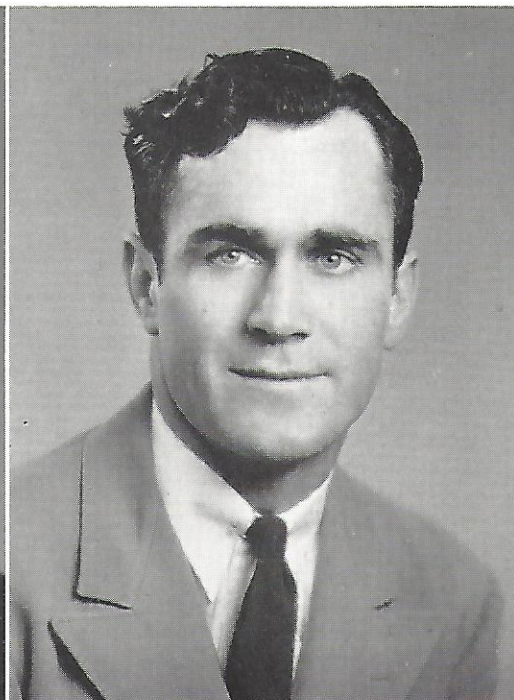
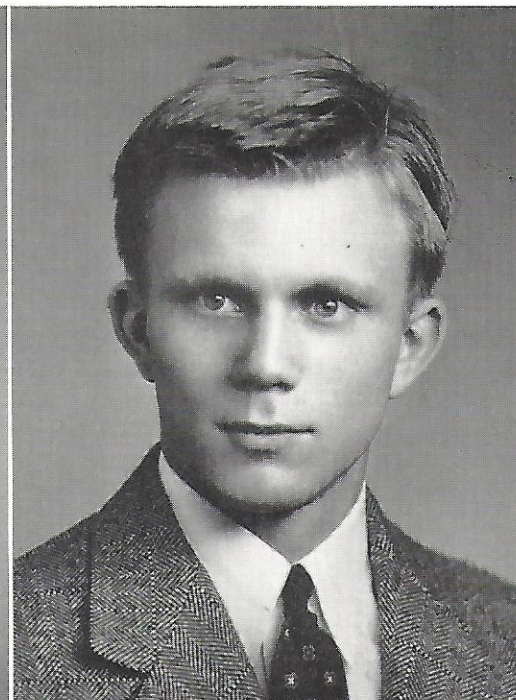


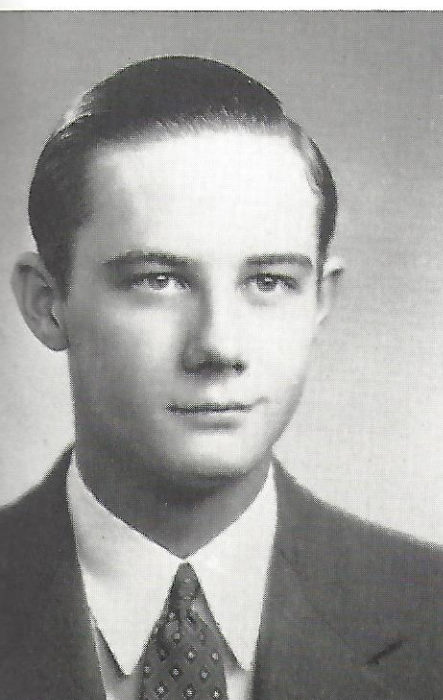
R. SMITH



SPENCER



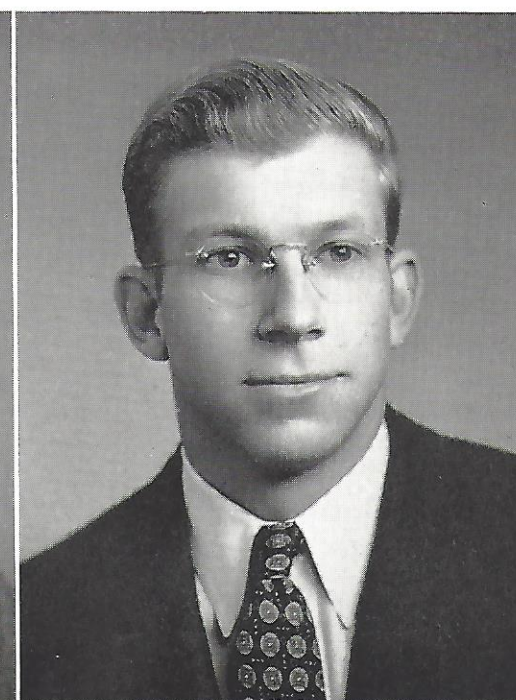
SPRUNT



SUBER



SUMMERS



TALMAGE

WILLIAM H. SQUIRES, K Σ  
GREENVILLE, S. C.

*B.S. in Chemistry*

Basketball Manager (1, 2, 3, 4); Freshman Manager (4); Gamma Sigma Epsilon; *Scripts 'n Pranks* (1); *QUIPS AND CRANKS* (1, 2); *Scabbard and Blade*.

ROY B. SUBER  
WHITMIRE, S. C.

*B.S. in Biology, Psychology, and Education*

Accompanist Glee Club (2, 3, 4); Assistant in Psychology and Education; Phi Mu Alpha; Football Band (1, 2, 3); Spanish Club; Student Organ Recital.

WILLIAM F. SUMMERS, Φ Γ Δ  
STATESVILLE, N. C.

*A.B. in Philosophy*

Red and Black Masquers; Philanthropic Literary Society; Debating Team; Forensic Council (3, 4), President (4); Glee Club (1, 2, 3, 4), President (4); President Eta Sigma Phi; Honorary Fraternity Council.

JOHN S. TALMAGE  
DECATUR, GA.

*A.B. in Physics and Spanish*

"D" Club; Cross-Country (1, 2); Tennis (1); Soccer (3, 4); Spanish Club.