

CHARLES SAVOLDI

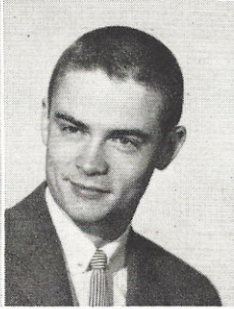
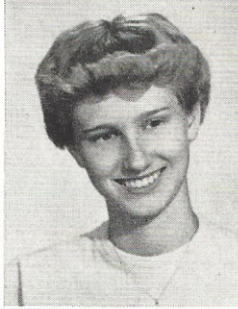


JUDITH LEE SCHAEFER
(Judy)

Operetta, '53-'54; Christmas Program, '53, '54; Pep Club, '53, '54; May Musical, '53; Pan American Club, '54; G.A.A., '54; Cheerleaders Club, '54; Girls' Basketball, '54; Volleyball, '54; Student Council (Financial Committee), '54, '56; Girls' Bowling, '55, '56.

JOAN RUTH SCHLUETER
(Joanie)

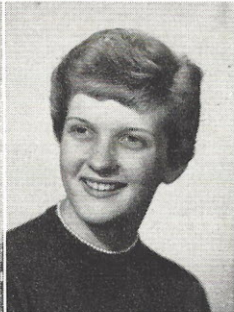
Christmas Program, '53; Operetta, '53; Skating Club, '53; Pep Club, '53-'54; Cheerleaders Club, '54; Pan American Club, '54, '55; Pioneer, '55; Bowling Club, (Captain, Second Place Trophy) '54-'56; G.A.A., '54-'56; Student Council (Financial Committee) '54-'56; Modern Dance, '55-'56; Girls' Basketball, '55-'56; Hello Day, '56; Volleyball, '56; Duplicating Service, '56; Washington Trip, '56; New York Trip, '56.



LLOYD SCHUELER (Buck)

Special Service, '54; Choir, '55-'56; Boys' Glee, '55-'56; Madrecal Group, '56; Blue Notes, '56; Senior Play, '56; May Musicale, '56.

RONALD SCHUERMAN

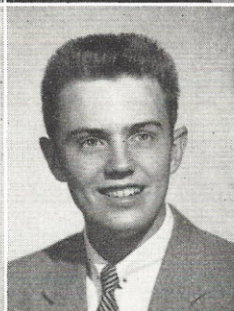
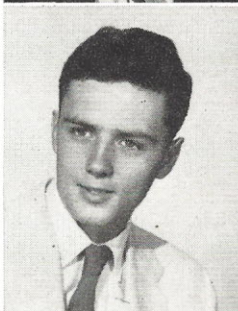


JUDY SCHWARZ

Girls' Glee, '53; Adv. Chorus, '53; Pep Club, '53; Operetta, '53-'54; Spring Festival, '54-'55; Science Fair (Gold Seal), '55; Hello Day, '53; Choir (Boys' Treasurer), '55, '56.

CLARENCE SHAUL (Smiley)

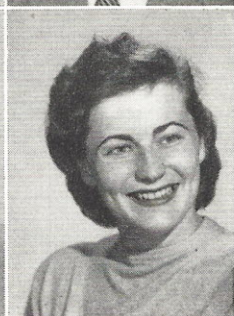
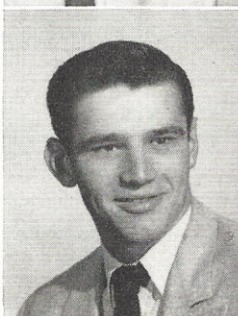
Operetta, '53; Science Fair, '53; Special Awards, '53-'54; Christmas Program, '53-'56; Spring Festival, '53-'56; Boys' Glee (Vice President), '53-'56; Student Council, (Alternate) '52-'55; Choir, '56.



RAYMOND SHEPHERD (Ray)

Student Council President; Special Service, '53; Chess Club, '54; Science Fair, '54; Pan American Club, (President), '54-'56; Student Council, '54-'56; Mexico Trip, '55; Operetta, '55; Memorial Program, '55; Christmas Program, '55; Model U. N. (Chief Delegate), '55-'56; Hello Day, '55-'56; Choir (Treasurer), '55-'56; Senior Play, (Stage Manager), '56; Boys' State, '56; White House Conference on Education, '56; City Wide Student Council, '56; Junior Town Hall Speaker, '56; Hello Day Committee, '56; Boys' Glee, '56; May Musicale, '56; Harvard Book Award, '56.

TONY SMITH



EDNA SOSSAMAN (Eddie)

Service Club, '53.