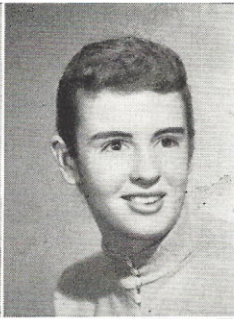


ROBERT BIGGAR (Bob)

Band, '54-'56; Spring Festival, '54-'56; Operetta, '56; Christmas Program, '56; Boys' Glee, '56, '57; Photography Club, '56, '57; Physics Club, '56, '57.



SUE ANN BINDBEUTEL (Susie)

Foreign Language Play, '53; Pan-American Club, '53-'54; Jr. Red Cross Service, '53, '54; Pep Club, '53-'55; Tennis Club, '54; Student Registration, '54-'57; Adv. Chorus, '54, '56; May Musicale, '54, '56; Girls' Glee, '55; Operetta, '55; Christmas Program, '55; Freshman Christmas Play, '55; KSLH, '55; Modern Dance Club, '55; Allied Youth, '55; Receptionist, '55; Mock U.N. Meeting, '55; Dramatics, '55, '56; Bowling Club, '55-'57; Biology Club, '56; New York, '56; Roundup Staff (Associate Editor), '56, '57; Curators Certificate of Merit, '57.

ALBERT BLACKFORD (Al)

Boys' Glee (Librarian), '53-'55; Operetta, '53-'55; Christmas Program, '53-'55; Spring Festival, '54; Freshman Aud, '54; "B" Football, '54; May Musicale, '54, '55; Washington Trip, '54, '55; Student Council, '54-'57; PTA Aud, '55; Hello Day, '55; Science Fair, '55.

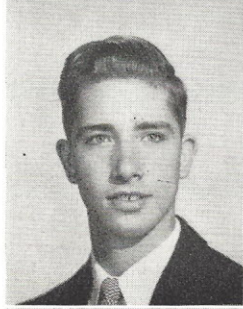


PHYLLIS BLANCHFIELD (Phyl)

Jr. Red Cross Sewing, '53, '54; Jr. Red Cross Service (Secretary, Treasurer, President), '53-'57; Jr. Red Cross City-County Council (Secretary, Treasurer, President), '54-'56; Allied Youth, '54, '55; Kitchen Contest (\$25.00 Winner), '55; National Dietetics Association, '55; Operetta, '55; Christmas Program, '55; French Club, '55, '56; Adv. Chorus, '55, '56; New York Trip, '56; May Musicale, '56; Dramatics Club, '56, '57; Receptionist Club, '57.

RUSSELL BLASE

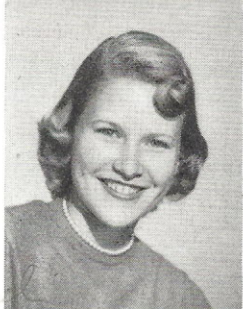
Band, '53-'55; Projection Club, '53-'56; Operetta, '56; Choir, '56, '57.



JANICE BOTHMAN

JUDITH BOWLES (Judy)

Student Council, '56.

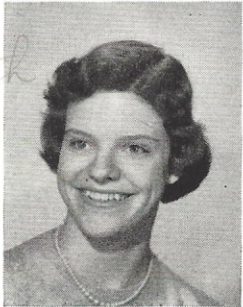


GEORGE J. BRENNER (Jack)

Aeronautics Club, '54; Rifle Club (President), '54-'57; Science Fair (Second Place), '55; Rifle Club (Letter, Captain), '55-'57; Physics Club, '56; Students In Industry Day, '56; Curators Certificate of Merit, '57.

EDITH BRINKMANN

Receptionists Club, '53-'54; Operetta, '54; Advanced Chorus, '54-'55; Spring Festival, '54-'57; Special Service, '54-'56; G.A.A. Officials Club, '55; G.A.A., '55; Girls' Glee, '56; Choir, '57.



SHARON KAY BROWNE (Sha)

Foreign Language Play, '53; French Club, '53-'55; Stamp and Bond Salesman, '53-'57; Student Registration '54; Adv. Chorus, '54; May Musicale, '54, '56; Mock U.N. Meeting, '55; Tennis Club, '55, '56; Girls' Glee, '55, '56; Freshman Aud, '55, '56; G.A.A., '55-'57; Basketball Club, '55-'57; Bowling Club, '55-'57; Radio Workshop, '55, '56; Washington Trip, '56; PTA Aud, '56; Biology Club, '56; Mothers' Day Aud, '56; Operetta, '56; National Bowling Tournament, '56; Volleyball Club, '56, '57; Officials Club, '56, '57; Softball Club, '56, '57; Pioneer Staff (Co-Editor), '56, '57; Students-In-Industry Day, '57; Special Service, '57; Curators Certificate of Merit, '57.