

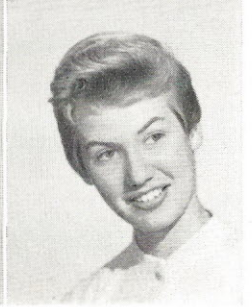
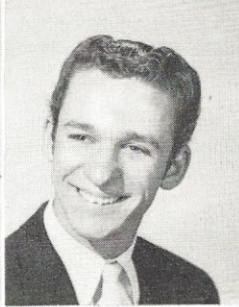
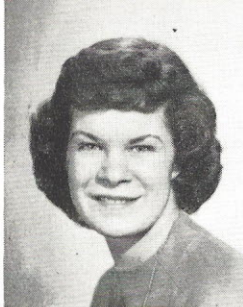
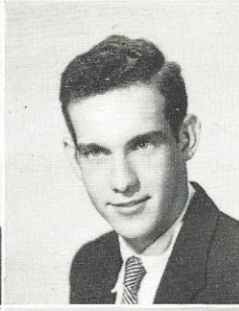
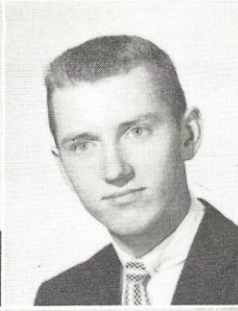
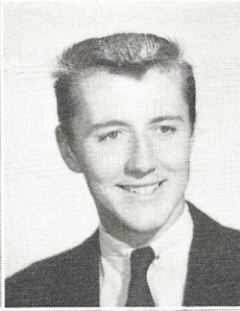
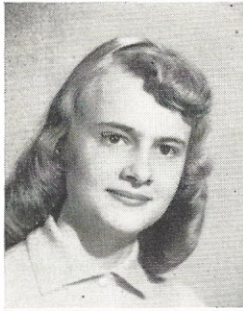
KRAUSE

KUHL

KUHLMAN

KUSTER

LANGTON



LaPLANT

LEONARD

LIEBER

LINDHURST

LINHART

RUTH ANN KRAUSE (Rudie)

Jr. Red Cross Sewing, '53, '54; Pep Club, '54, '55; Operetta, '54, '56; Adv. Chorus (Letter), '54-'56; Cheerleaders Club, '54-'56; Christmas Program, '54-'56; Spring Festival, '55, '56; P.T.A. Program, '56; Clef and Quaver Club, '56, '57; Dramatics, '56, '57.

RALPH KUHL

"B" Basketball, '53; "B" Football, '54; Boys' Glee, '54, '55; Operetta, '55; Freshman Aud, '55; Christmas Program, '55; Varsity Football, '56; Washington U. Jury, '56; Baseball, '57.

JACK KUHLMAN

Band, '53-'57; "B" Basketball, '54; Hello Day, '54-'57; Operetta, '54-'56; Spring Festival, '54-'57; Radio Workshop, '55, '56; Student Registration, '55-'57; Orchestra (President), '56, '57; Intergroup Youth Conference, '57.

ED KUSTER

SANDRA JEAN LANGTON (Sandy)

May Musicale, '54; Adv. Chorus, '54, '55; Modern Dance Club, '55; Operetta, '55; Dramatics, '55, '56; Cheerleaders Club, '55, '56; Pep Club, '55, '56; Receptionist, '56; Pioneer (Sports Editor and Asst. Editorial Editor), '56, '57; Radio, '56, '57; Bowling Club, '56, '57; G.A.A., '56, '57; Intergroup Youth Conference, '57.

JOYCE LaPLANT

Adv. Chorus, '54; Operetta, '54-'56; Christmas Program, '54-'56; Freshman Aud, '54-'56; Bowling Club, '54-'57; Jr. Girls' Glee, '55; Spring Festival, '55; PTA Aud, '55; Girls' Glee, '55, '56; New York Trip, '56; Duplicating Service, '56, '57.

NANCY LEONARD

Student Council Representative, '54; Allied Youth, '54, '55; Stamp and Bond Salesman, '55; Operetta, '55; Christmas Program, '55; Freshman Aud, '55; May Musicale, '55; Adv. Chorus, '55; Modern Dance Club, '55; Jr. Girls' Glee, '56; Cheerleaders Club, '56; Bowling Club, '56; New York Trip, '56; Dramatics, '56; Duplicating Service, '56, '57.

JACLYN ROSE LIEBER (Jackie)

Tennis Club, '54; Adv. Chorus, '54, '55; Pep Club, '54, '55; Cheerleaders Club, '54, '55; Operetta, '54-'56; Mock U.N., '55; Bowling Club (Treasurer), '55-'57; Student Council, '55, '56; Student Registration, '55-'57; Girls' Glee, '55, '56; May Musicale, '55-'57; Christmas Program, '55, '56; MEC, '56; Modern Dance, '56; Biology Club (Secretary), '56; New York Trip, '56; Hello Day, '56, '57; Choir, '56, '57; Roundup Staff, '56, '57; Curators Certificate of Merit, '57.

FRANK LINDHURST (Hawkeye)

Science Fair, '54; Operetta, '54, '56; Christmas Program, '54, '56; Boys' Glee (President, Treasurer, Librarian), '54-'57; Students-In-Industry Day, '56; Pioneer Staff (Copy Editor), '56, '57; Curators Certificate of Merit, '57.

CHARLOTTE LINHART (Charmie)

Band, '53-'57; Orchestra, '54-'57; Hello Day, '54-'57; Operetta, '54-'57; Christmas Program, '54-'57; Spring Festival, '54-'57; All-City Orchestra, '54-'57; MENC, '55; G.A.A., '55-'57; Student Council (Treasurer), '55-'57; Clef and Quaver Club, '55, '56; Basketball Club, '55, '56; Future Teachers' of America Club, '56, '57; Pioneer Staff (Co-editor), '56, '57; Volleyball Club, '56, '57; Intergroup Youth Conference, '57.



Pasting up the news with the Pioneer staff.