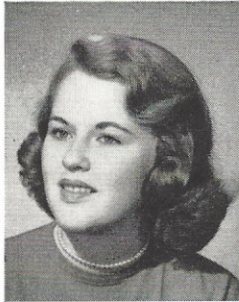


**NORMA LEE SCHWARTZ**  
(Norm)

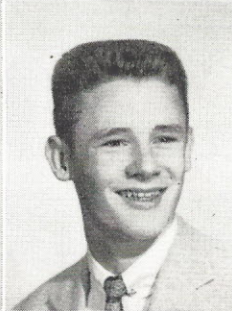
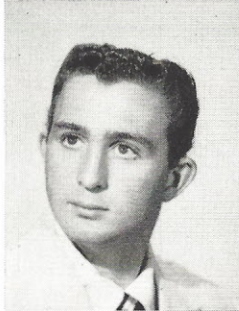
Adv. Chorus (Letter, Treasurer), '53-'57; Operetta, '53-'56; Christmas Program, '53-'56; May Musicale, '54-'57; Girls' Glee, '55; PTA Aud, '55; Mothers Day Aud, '55; Hello Day, '55-'57; Freshman Aud, '55, '56; Clef and Quaver Club, '55-'57; Open House, '56; Miss SW Dance, '56; MENC, '56; Student Council, '56; Radio Workshop, '56; KSLH, '56; Mid-American Jubilee, '56; Choir, '56, '57; Dramatics (Chairmans), '56, '57.



**BETTY SEGEDIN**  
Spring Festival, '56; Adv. Chorus, '56.

**RODNEY SEITZ (Clarabel)**

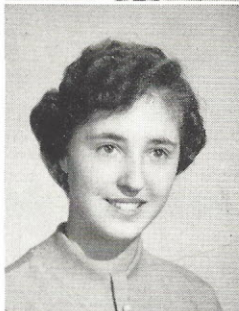
Adv. Chorus, '54; Operetta, '54; Christmas Program, '55; PTA Program, '55; Hello Day, '55, '56; Boys' Glee (Vice-President), '55-'57; May Musicale, '56; Baseball, '56, '57.



**RICHARD SHANKLIN**

**JANE SHEETS (Twin)**

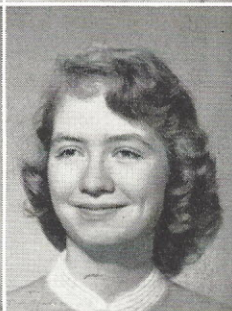
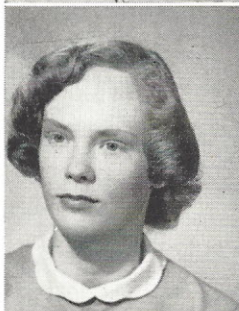
Intermediate Choir, '53; Hiking Club, '53, '54; Basketball Club, '53-'57; Jr. Choir, '54; Receptionist Club, '54; Volleyball Club, '53-'57; Softball Club, '54, '55; G.A.A., (Letter, Treasurer), '54-'57; Officials Club, '54-'57; Special Service, '55; Kitchen Contest, '55; Regional Scholastic Art Award (Gold Key Pin), '55; Washington Trip, '56; Students In Industry Day, '56; Bowling Club, '56, '57; Pioneer Staff (Asst. Art Editor), '57; Library Assistant, '57.



**JEAN SHEETS (Twin)**  
Intermediate Choir, '53; Hiking Club, '53-'54; Orange & Blue Representative, '53-'54; Basketball Club, '53-'54; Junior Choir, '54; Softball Club, '54-'55; Volleyball Club, '54-'57; G.A.A., (Secretary), '54-'57; Official Club, '54-'57; Receptionist (Letter), '54-'57; Special Service, '56; Washington Trip, '56; Students-In-Industry, '56; Bowling Club, '56-'57; Pioneer Staff (Exchange Editor), '57.

**JUDI SHERFIELD (Kitten)**

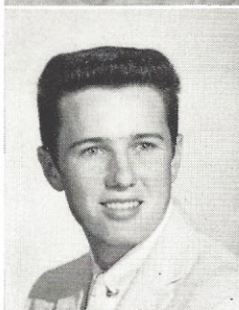
Sports Club, '53-'55; Tigerettes, '54; Hora Latina, '54; Volleyball Club, '55; Home Economics Fashion Show, '56; Jr. Town Meeting, '56; Freshman Aud, '56; Dramatics, '56, '57; Curators Certificate of Merit, '57.



**SHARON SHREVE**  
Operetta, '55; Christmas Program, '55; Open House, '55; Advanced Chorus, '55-'56; Spring Festival, '56; National Anthology, '56.

**PAUL SHY**

Rifle Club, '53, '54; Stamps and Bonds Salesman, '53-'57; Track, '54-'57; Curators Certificate of Merit, '57.



**GLORIA SKAGGS (Glo)**  
Christmas Program, '54; Advanced Chorus, '54-'55; Open House, '55; Junior Girls' Glee, '55; Freshman Aud, '55.