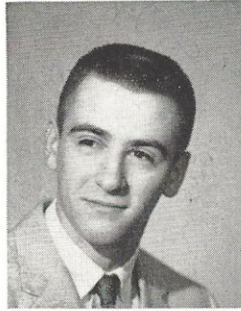


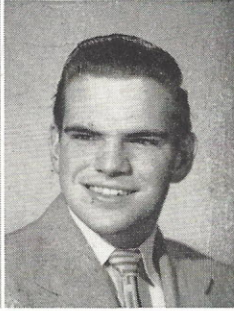
FRED MATTHIAS (Elbows)

"B" Basketball, '53, '54; Spring Festival, '54; Operetta, '54, '55; Christmas Aud, '54-'56; Varsity Football, '56; Baseball, '57; Lettermans Club, '57.



GEORGE RADFORD

"B" Football, '54; Track, '55; Varsity Football, '56; Operetta, '56.



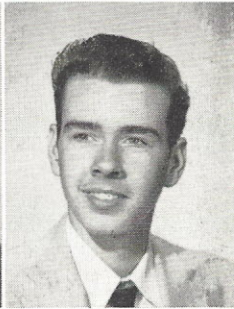
ROBERTA GILLON

Student Registration, '54-'57; Student Council (Representative), '54, '55; G.A.A., '54-'57; Basketball Club, '54-'57; Bowling Club (Team Captain), '54, '55; Operetta, '54-'56; Receptionist, '54-'56; Allied Youth, '55; Volleyball Club, '55-'57; Intergroup Youth Conference, '55, '56; Pioneer Staff (Copy Editor, Sports Editor), '56, '57; Senior Play (Publicity Committee), '57.



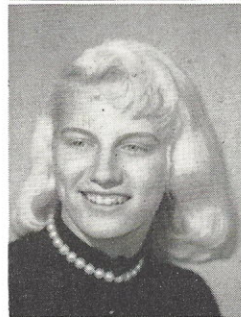
**TERRY WAYNE BACHMAN
(Summer School)**

Student Council Alternate '53; May Musicale '54; Christmas Program '54-'56; Adv. Chorus '54-'56; Boys' Glee '55.



**MARY JUNE GROSS (June)
(Summer School)**

French Club, '54; Adv. Chorus, '54-'55; Christmas Program, '54, '55; Special Service, '56; G.A.A., '57.

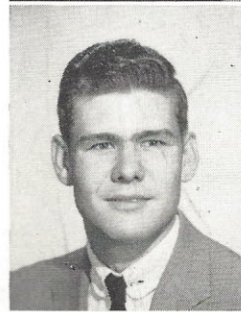


**TOM MASON
(Summer School)**

Track, '53; Football, '53, '54; Student Manager, '55; Baseball, '56, '57; Physics Club, '56, '57.

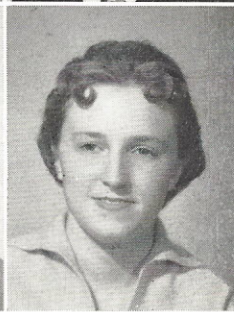


**JIM RICHARDSON
(Summer School)**



**DELORES SCHADE
(Summer School)**

Adv. Chorus, '54-'57; Spring Festival, '54-'56; Christmas Program, '54-'56; Operetta, '54-'56; Clef and Quaver Club, '56.



**DON NETHERTON
JOE PALAZZO**



**JERRY THOMAS
(Tutorial School)**

**GLENN E. GUETERSLOH
(Armed Forces)**

