

Radio Workshop



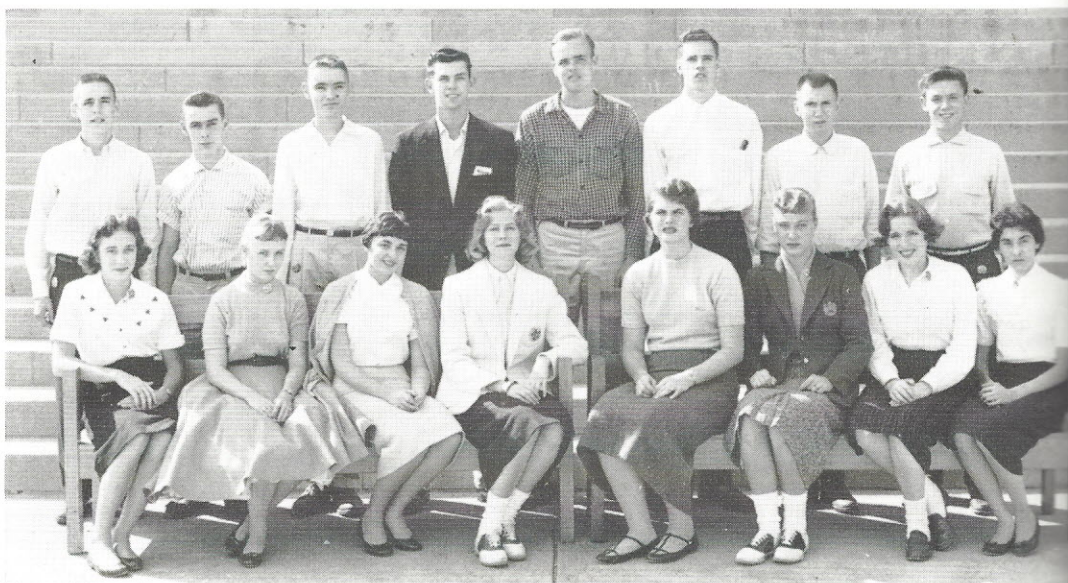
The little man made world revolving around SW is Radio Work Shop. Inside this satellite the energetic members can be seen doing many activities which range from cellophane wrapped around the microphone to imitate the sound of fire, to car doors slamming, shattering glass tinkling, footsteps sounding on the stairs, someone walking in sand or gravel in a baking pan, a wind machine blowing the many "seasons" in the play, flatten tin cans clanging, lightswitches clicking, egg beaters whirling, and perhaps someone eating a carrot to sound like a squirrel gnawing on wood.



Fall I

Row One: D. Thompson, B. Robinson, C. Barnard, S. Anzalone, S. Oswald, C. Werner, B. Young, K. Walsh.
Row Two: R. Gephardt, D. Godi, D. Keller, C. Gaines, J. Shannahan, D. Slaughter, K. Geimer, T. Carney, D. Foy.

Fall II



Row One: J. Ker, J. Thatcher, P. DeRosa, J. Shankland, S. Parks, S. Hasekamp, M. England, J. Schrock.

Row Two: E. Wamser, J. Saali, R. Hall, J. Hamel, R. Forshree, B. Keller, J. Rutledge, V. Thompson.