

### JOSEPH CARL SCHMID (Joe)

Band, '54-'56; Track, '54-'57; Football (B-Team), '55; Student Council Alternate, '56; Letterman Club (Secretary), '57.

### SANDRA SCHRAND (Sandi)

Advanced Chorus, '54; KXOK Recording, '54; May Musical, '54-'57; Basketball (Trophy), '55-'56; School Enumeration, '55; Girls' Glee, '55-'56; Freshman Aud, '55, '56; Volleyball, '55-'56; Operetta, '55-'56; Tennis Club, '55-'56; Pep Club, '55-'56; Cheerleaders' Club, '55-'56; Christmas Program, '55-'57; Science Fair (Corresponding Secretary), '56; UN Contest, '56; Pioneer Salesman, '56; New York Trip, '56; Washington Trip, '56; Science Demonstration, '56; Spring Dance, '56, '57; Student Council (Secretary), '57; Pioneer (Co-Editor), '57; Open House, '57; A Cappella Choir, '57; Hello Day, '57; Band Benefit Show, '57; United Fund Broadcast, '57; P.T.A. Convention, '57; Muny Aud, '57; Caroling, '57; Noma-Coronado, '57; Public Library Jefferson, '57; Frisco Luncheon, '57; Kiel Auditorium, '57; Miss Southwest Dance, '57.

### JACQUELINE SCHROCK (Jackie)

### GERALD R. SCHULZ (Jerry)

Student Council Alternate, '54; Rifle Club, '54, '55; Christmas Program, '54-'55; Advanced Chorus, '54-'56.

### MARIAN O. SEIBT (Merreo)

Pep Club, '55, '56; Cheerleaders Club, '55, '56; Student Registrar, '55-'57; Kitchen Planning Contest, '55, '57; Hora Latina, '56; Science Fair, '56; Pioneer Salesman, '56; New York Trip, '56; Roundup, '56, '57; Bowling Club (Trophy), '56-'57; Student Council, '56-'57; Pioneer, '57; Basketball, '57; Roundup Salesman, '57; Spring Dance, '57; American Junior Bowling Congress National Tournament, '57.

### MARY LOU SHANNAHAN

Allied Youth, '54; Enumeration Project, '54; Pan-American Club, '54-'56; Advanced Chorus, '54-'56; Christmas Program, '54, '56; Jr. Girls' Glee, '55; Operetta (Ticket Comm.), '55, '56; May Musical, '55, '56; Student Registration, '55-'57; Biology Club (Treasurer), '55-'57; New York Trip, '56; G.A.A. (Treasurer, Letter), '56, '57; Tennis Club, '57; P.T.A. Panel, '57; Officials Club, '57; Bowling Club, '57.

### ANTOINETTE SOTIRA (Toni)

Pep Club, '54; Junior Girls' Glee, '55; Operetta, '56; Advanced Chorus, '57.

### CAROL STEINMETZ

Pep Club, '54; Spring Festival, '55; Advanced Chorus, '55, '56; Student Registration, '56, '57; Students-In-Industry Day, '57.

### EILEEN SWEENEY (I)

Junior Red Cross, '54; Junior Achievement, (Treasurer), '55, '56. (Du Bourg High School)

### JUDITH ANNE THATCHER (Judy)

Student Council, '54; Advanced Chorus, '54; Pioneer Salesman, '54, '55; Roundup Salesman, '54, '55; Special Service, '55; Jr. Girls' Glee, '55; Cheerleaders' Club, '55, '56; Dramatics Club, '56; Pioneer, '56, '57; Bowling Club, '56, '57; Radio Workshop, '57; KSLH Broadcast, '57; Miss SW Maid, '57.

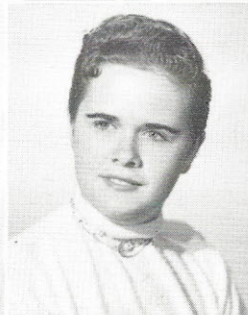
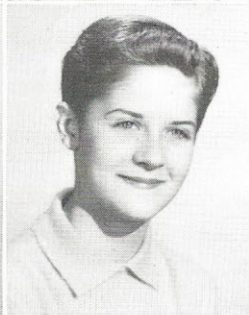
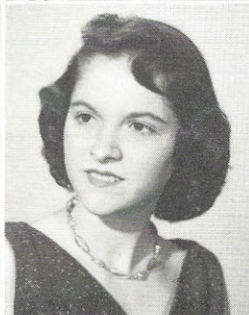
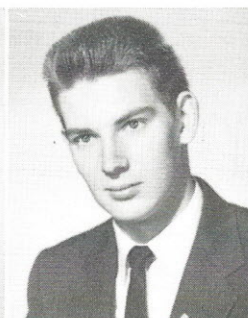
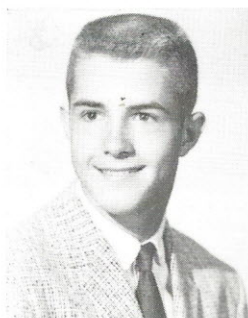
SCHMID

SCHRAND

SCHROCK

SCHULZ

SEIBT



SHANNAHAN

SOTIRA

STEINMETZ

SWEENEY

THATCHER