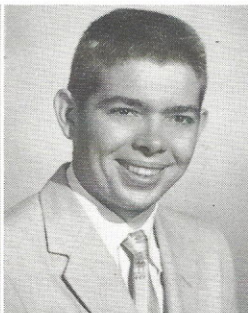


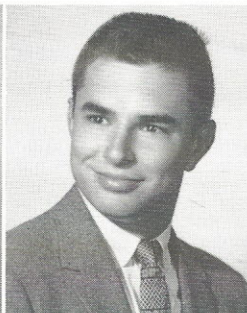
BAUGH



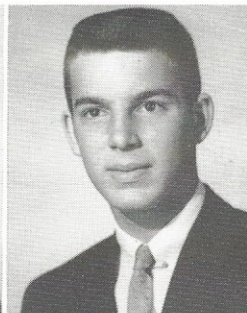
BEALL



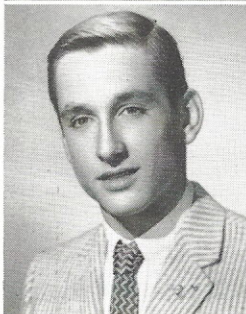
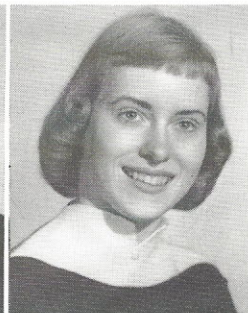
BEATY



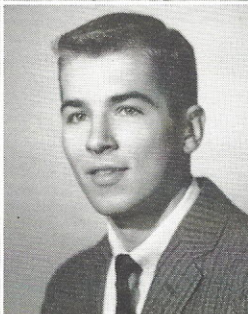
BECHERER



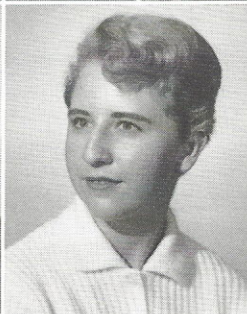
BENT



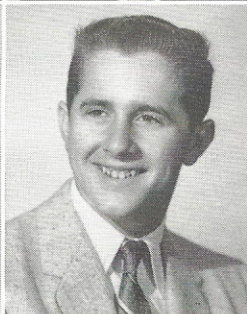
BERRA



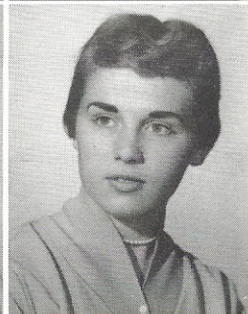
BERVING



BOEHRINGER



BOGACKI



BOLTON

JENNIFER BAUGH

Bowling Club, '55; Pan American Club, '55-'56; Modern Dance Club, '56; Tennis Club, '57; Dramatics, '57-'58; Stamp and Bond Salesman, '57-'58; Registrar, '58.

TONY BERRA (Midge)

Student-in-Industry Day, '57; Track, '57-'58.

RICHARD BEALL

ALFRED ALAN BERVING (Al)

Track, '54; B. Basketball, '54-'55; Hora Latin, '55; Round-Up Salesman, '55-'56; Physics Club, '55-'56; Varsity Basketball, '55, '57, '58; V. K. Lines Trip, '57; Lettermen's Club, '57-'58; Student Council (Representative), '58.

BILLY BOB BEATY (Bill)

Student Council (Representative), '54-'58; Science Fair, '55; Hora Latina, '55, '56; B-Basketball, '55, '56; Advanced Chorus, (Treasurer, President), '55-'58; May Musical, '55-'58; All-City Safety League (President), '55-'58; Hello Day, '56, '57; Varsity Basketball, '56-'58; Mo. State, '57; Physics Club, '57; Harvard Book Award, '57; Students-in-Industry (Asst. Plant Manager), '57; City-wide Student Council (Representative), '57, '58; Golf, '57, '58; Letterman's Club, '57, '58; Student Registration, '58.

ROSALIE BOEHRINGER (Rosey)

Jr. Red Cross, '54-'56; Christmas Program, '56; Operetta, '56; Freshman Aud, '56; Girls' Glee Club, '55-'57; Freshman Aud, '57; GAA, '57-'58.

DON BECHERER (Beech)

B. Basketball, '54-'56; B. Football, '55; Jr. Track, '55; Golf (Captain), '55-'57; Lettermans Club, '55-'58; Varsity Basketball, '56-'58; Student-in-Industry Day, '57; Physics Club, '57.

GEORGE A. BOGACKI

Advanced Chorus, '54; Pan American Club, '54-'55; Christmas Aud, '54-'57; Operetta, '54-'57; Jr. League Tea Room, '55; PTA Program, '55; Hello Day, '55-'57; May Musical, '55-'57; A Cappella, '55-'58; Boys' Glee, '55-'58; MENC Chorus, '56; Mid-American Jubilee, '56; Public Library, '56; NOMA, '56, '57; ASFSA Convention, '57; Brotherhood Aud, '57; Band Benefit, '57; Muny Aud, '57; Constitution Day, '57; PTA Convention, '57; TV Channel 2, '57; TV Channel 9, '57; Frisco Men's Club, '57.

EDNA BENT (Red)

Receptionist, '56; Operetta, '56; Christmas Program, '56; Freshman Aud, '56; Girls' Glee, '56-'58; May Festival, '57; Freshman Aud, '57; Muny Opera Aud, '57; Operetta, '57; Christmas Program, '57; Freshman Aud, '57.

AMY SUE BOLTON

Freshman Aud, '54; Pan-American Aud, '54; Student Council, '54-'55; Receptionists Club, '54-'55; Pep Club, '54-'56; Cheerleaders Club, '54-'57; Operetta, '55; Freshman Welcome, '55; Hello Day Committee, '55; Junior Girls' Glee, '55-'56; Spring Festival, '55-'56; New York Trip, '56; Tax Campaign Parade, '56; Girls' State (Director of Savings and Loans), '57; GAA Basketball, '57; Oratorical Contest, '57; GAA Volleyball, '57-'58; Pioneer, '57-'58; Bowling Club (Asst. Treasurer), '57-'58.