

• GIRLS' BASKETBALL.

Kneeling Left to Right—Anne Glover, Mazie Ramsey, Rubye Floyd, Frances McDaniel, Ethel Sprott, Margaret Ramsey.

Standing Left to Right—Jean Moylan, Manager, Martha Anne Lowndes, Frances Breland, Margie Carter, Anne Ficken, Vivienne Padgett, Mary Mitchell Sanders, Miss Martha Jo Jones, Coach.

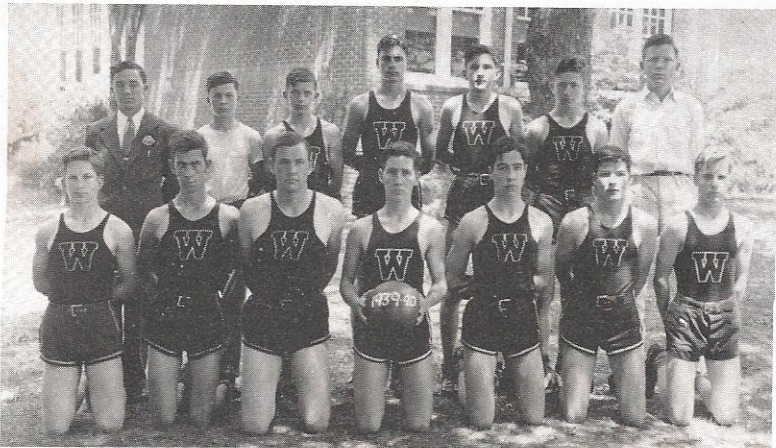


## BASKETBALL GAMES OF 1939-40 SEASON

Although both Walterboro teams were small and the boys' team handicapped during the latter part of the season, the teams fought from whistle to whistle in every game. For the girls, Lowndes, Carter, McDaniel, and Sprott saw much service at forwards, while Floyd, Padgett, Ficken, Sanders, and Ramsey formed the guarding combination.

For the boys, J. Hayden, Godwin, and Lindsay performed as forwards, with Padgett, Fishburne, and Glover covering the guard positions. H. Hayden and Sanders showed up at center. Following is a summary of the scores of the games played:

BOYS		GIRLS					
Walterboro.....	20	Faculty .....	19	Walterboro.....	14	Town Team .....	43
Walterboro.....	13	Bishop England ...	40	Walterboro.....	23	Bishop England ...	30
Walterboro.....	31	Beaufort .....	23	Walterboro.....	45	Beaufort .....	12
Walterboro.....	34	St. Paul .....	48	Walterboro.....	19	St. Paul .....	48
Walterboro.....	46	Summerville .....	12	Walterboro.....	23	Summerville .....	25
Walterboro.....	23	Bishop England ...	53	Walterboro.....	38	Bishop England ...	34
Walterboro.....	47	Ridgeland .....	33	Walterboro.....	16	Ridgeland .....	22
Walterboro.....	16	Summerville .....	35	Walterboro.....	23	Summerville .....	14
Walterboro.....	35	Beaufort .....	31	Walterboro.....	37	Beaufort .....	28
Walterboro.....	27	Town Team .....	34	Walterboro.....	30	Faculty .....	24
Walterboro.....	21	St. George .....	37	Walterboro.....	31	Ridgeland .....	14
Walterboro.....	15	St. George .....	35	Walterboro.....	40	St. George .....	26
Walterboro.....	21	St. Paul .....	43	Walterboro.....	22	St. George .....	25
Walterboro.....	18	Orangeburg .....	6	Walterboro.....	29	St. Paul .....	44
				Walterboro.....	17	Orangeburg .....	34



BASKETBALL TEAM •

Kneeling Left to Right—Harold Jaillette, Ernest Godwin, Herbert Hayden, Paul Padgett, Jack Lindsay, John Pope Fishburne, Fletcher Riddle.

Standing Left to Right—Coach Robinson, Jimmy Black, H. S. Glover, Henry Sanders, James Glover, Harold Latham, Frank Baldwin.