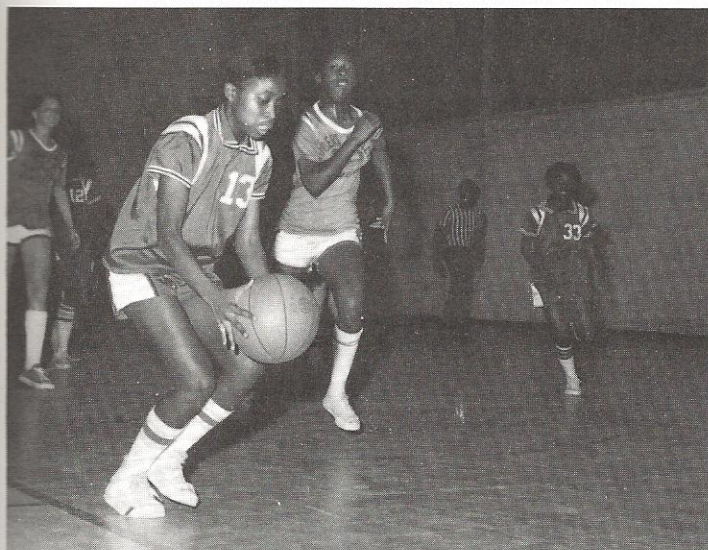


J V Girls Gain Experience

Coach Danny Thomas saw his team receive two forfeit victories at the expense of Summerville and Roberts. The remainder of the season saw many hard fought contests as the girls faced a variety of conference and non-conference foes. Outstanding players included Robin Gerideau, Lynn Saunders, and Sheryl Thomas. Others seeing action were Sherrie Blocker, Mary Gethers, Wanda Gibson, Wanda Stinney, and Rochelle Newton.

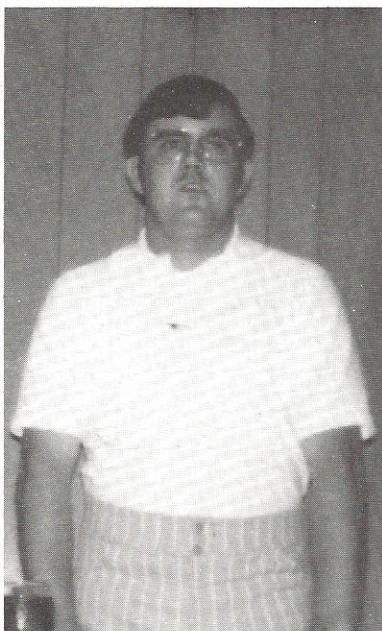
Coach Thomas voted Gloria Simmons and Sherry Blocker as the most improved players.



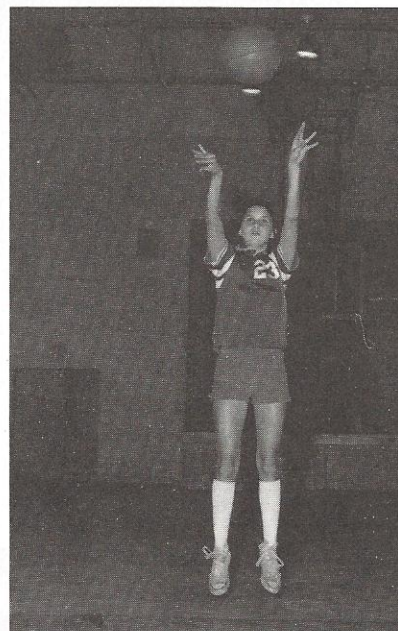
Lynn Saunders (13) races down the court.



Wanda Stinney jumps while Robin Gerideau and Lynn Saunders watch.



(Above) Coach Thomas gives a few words of advice. (Left) Lynn Saunders shoots.



Sherrie Blocker shoots a free throw.



Opponent

Walterboro

19	Robert Smalls	23
40	St. Andrews	12
27	St. Helena	26
36	Berkeley	12
25	Goose Creek	19
30	Berkeley	33
31	Goose Creek	38
22	Robert Smalls	29
39	St. Andrews	28
31	St. Helena	20
32	Wando	24