

Melissa Brown  
Prince Brown  
Theresa Brown  
Willie L. Brown  
George K. Bryan

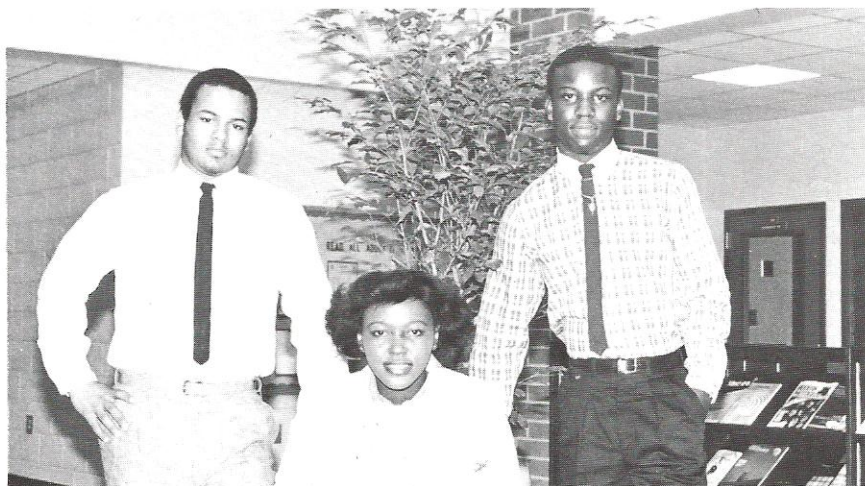


Harry L. Bryan  
Brenda Burns  
Blossom Cain  
Jeff S. Caldwell  
Amie Campbell



# Best Dressed

Was it their taste? Was it their "look"? No one knows, but whatever it was, Gerald Maree, Ruth Deal, and Kevin Whittaker were voted best dressed for it. "Dressing is one of the ways to determine someone's personality. Whenever I'm dressed well, I feel good also," said Gerald Maree.



**Melissa Brown**—Band 9,10,11,12; NHS 11,12; SAE 9; Student Council 11,12; Special Olympics 10; JETS 11,12; Literary Club 11,12; Pres; Class Treas. 11,12; NEDT Award; Volunteer at the Hospital.  
**Prince Brown**—Student Council 10; Bus Driver 11,12; King of Hearts 10,11; Football 10.  
**Theresa Brown**—Allied Health Club; Activity and Rec. Club; DE Club; Runner up in May Queen Pageant.  
**Willie Brown**—Science Club 9; Office Aide 10; Activity and Rec. Club 10; Special Olympics 11.  
**George Bryan**—Band 9,10,11,12; NHS 11,12; Student Council 11,12; Parliamentarian, Member at Large; FFA 9, Pres; Science Club 10,11,12; JETS 11,12.  
**Harry Bryan**—Office Aide 12; Science Club 9,10; Broadcasting Club 11; FCA 12; FFA 12; Soccer 12; Golf 11,12.  
**Brenda Burns**—Bus Driver 12; History 12; Garden 12.  
**Blossom Cain**—Office Aide 11; Chorus 9; FHA; Pep Club; Dance Club; Photography Club.  
**Jeff Caldwell**—V Football 12; Track 11,12; FBLA 11; FCA 12; Block W 12; Office Aide 12; Transfer Student from Alvin C. York Institute; Football 9,10; Track 9,10.

**Gloria Campbell**—Band 9,10; Student Council 9,12; Science Club 10,11; FHA 12; Garden 11; Broadcasting Club 12.  
**Tony Carson**—Band 9,10,11,12; Chorus 10,12; Chess Club 9,10,12; Broadcasting Club 12.  
**Diane Carter**—FHA; Pep Club; DE 1,11; Broadcasting.  
**Mike Carter**—Band 9,10,11,12; Office Aide 12; FFA 11,12; Student Council 9,10; Broadcasting Club 11; All State Chorus 11; Honors All State Chorus 12; Soccer 12.  
**Kevin Chambers**  
**Autha Chisolm**—Student Council 12; FHA 9; Cross Stitch Club 10; Photography Club 11; Pep Club 12; Broadcasting Club Treas. 12.  
**Bessie Chisolm**—Pep Club; Broadcasting Club.  
**Sandra Chisolm**—Pep Club; Garden; Broadcasting.  
**Ken Clark**—Band 9,10,11,12; Chess Club 9,10,11,12; JETS 11,12, Sec; Broadcasting 11; Golf 9,10,11; Tennis 12.  
**Ronald Clayton**—Special Olympics 9; Pep Club.  
**Veronica Clayton**—Band 9,10,11,12; Student Council 9,11,12; Special Olympics 10; SAE 10; JETS 11; A 11; Rice Planter 11,12; Miss Freshman; Queen of Hearts 9.

**Dwayne Coaxum**  
**Loey Coleman**  
**Ronnie Colson**—Paw Print Staff 12; Office Aide 11; Student Council 11; Block W; FCA; Football 10,11,12; Track 9,10; Baseball 12.  
**John Cook**  
**Joseph Cox**—Photography Club 10.  
**Peter Creel**—Military Club.  
**John Creel**—Military Club.  
**Cindy Crosby**—Band 9,10,11,12; Office Aide 12; FTA 11,12; Student Council 9,10,11,12; Literary 11; Drama Club 9; Science 10; SCASC Convention 11.  
**Dianne Crosby**—Band 9,10,11,12; NHS 11,12; FTA 12; Drama Club 9; Broadcasting Club 11; Student Council 9,10,11,12.  
**John Crosby**—Bus Driver 10,11,12; FFA; Science Club.  
**Laura Lynn Crosby**  
**Timmy Crosby**—Band 9,10; Science Club.  
**Sylvia Danner**—Chorus 10,11; Bus Driver 11,12; Pep Club 11; Special Olympics 11; Activity and Rec. Club 10; Bus Drivers' Club 12.  
**Donna Davenport**—Drama Club 9.  
**Ingrid Davis**—Band 9,10,11; Student Council 9; FHA 9,12; Pep Club.  
**Marinda Davis**—FHA.