



# S ame Ending,

## Different Season

Coming off an impressive season, the bulldog soccer team hoped to repeat and even make it to the playoffs. Unfortunately, this dream was not to be even though the team returned seven seniors. Three of these players were five year veterans, playing since eighth grade. The team relied on these seniors to provide leadership to the younger members on the team. Surprisingly, no juniors were on the team. Freshmen and sophomores made up the bulk of the team. Because it was the freshmen's first year, they were not very experienced which led to a depth problem. However, Coach Ray Stilwell saw a lot of potential in future squads. It was Coach Stilwell's first season as soccer coach and for the senior members on the team, the third coach they had had in four years.

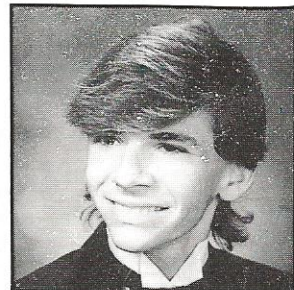
As usual, region 6-AAAA competition was extremely tough, producing the lower state champs, Wando. The dogs finished the season in the same place as last season; however, their final record was not the same. The dogs lost some key games to some tough out-of-conference opponents. The dogs lost twice to Hilton Head, who finished first in their conference. In general, the seniors on the team agreed that interest in soccer was steadily growing around the low country and state. With the growing interest and participation, the competition will grow tougher and tougher.

— Scott Schlessner



**SENIOR SETH HUCKABEE** attempts a goal. Seth also was captain of the Band of Blue.

**FRONT ROW:** DAvid Greene, Matt Hooker, Lawton Smith, Heath Duncan, Jon Gamble, Shawn Dixon, Brian Gwin, Andy Hughes, Craig Duffie, Chris Brownlee, Back Row: Coach Ray Stilwell, Jeff Hughes, Jesse Drew, Chris Turner, Johnny Thomas, Jeb Huckabee, Jose Sanchez, Lee Miller, Scott Schlessner, Jamie Colson, Seth Huckabee and Bernice Corbett.



**SENIOR TOMMY DUFFIE** was ineligible to play, but he helped the team during practice and games. Duffie received a scholarship to play soccer at Spartanburg Methodist College.