

T  
H  
E  
1  
9  
4  
9



P  
A  
N  
T  
H  
E  
R

James Attaway

### **Elizabeth Owen**

**BATESBURG-LEESVILLE** — Services for Elizabeth (Betty) Epting Owen, 72, will be conducted 11 a.m., Thursday at St. John's United Methodist Church with the Rev. Karin Culp officiating. Visitation will be from 7 to 9 p.m., Wednesday, at Barr-Price Funeral Home, Historic B-L Chapel. In lieu of flowers memorials may be made to St. John's UMC, 513 West Church Street, B-L, SC 29006.

Mrs. Owen died Monday May 31, 2004. Born in Richland County a daughter of the late J. Harold and Azilee Mills Epting. She was a homemaker, member of St. John's UMC where she sang in the choir for 50 years, was a member the Preface Club and the B-L Study Club.

Surviving are her husband, Dr. Robert W. Owen; son, Robert W. Owen, Jr. of B-L; daughters, Libby Owen Cromley of Saluda, Sally Owen of Pawley's Island; grandchildren, Mac, Meredith and Martha Cromley of Saluda, Ariel and Jacob Owen of B-L, Cyprus and James Goody of Pawley's Island.

Online register at [Barr-Price.com](http://Barr-Price.com).

To a sweet  
& wonderful friend.  
I wish you loads,  
"Loving" Barber

Lots of luck  
Paul

The best to a  
very nice girl  
Robert H.

Good luck  
and  
Best wishes  
to a swell  
gal!

Elizabeth Barber

Love you  
forever  
Joan K.

Love you  
forever  
Joan K.



**THE PANTHER 1949**



published  
by  
the  
BETA  
and  
PRESS  
Clubs  
of

**BATESBURG - LEESVILLE HIGH SCHOOL, BATESBURG, SOUTH CAROLINA**



## FOREWORD

We, the Beta and Press Clubs, wish to present this, the first edition of **THE PANTHER** for the enjoyment and pleasure of those who have been loyal in their devotion to Batesburg-Leesville High School.

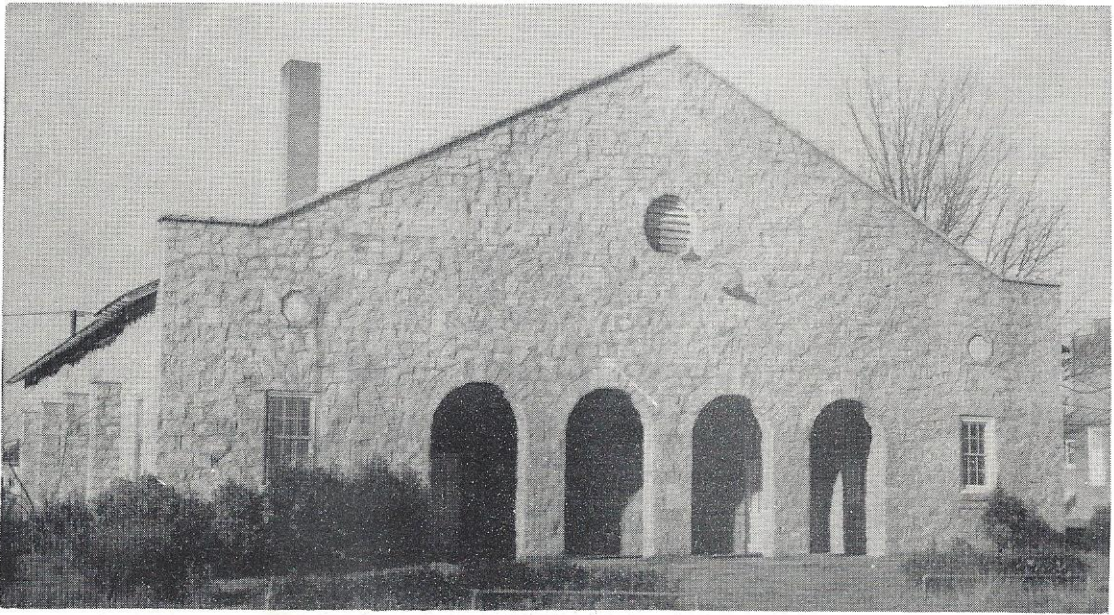
As future years come and go, we hope this Yearbook will prove a source of happy memories for us, our parents, and all who have had a part in helping make this book a reality.

## DEDICATION



In honor and appreciation for the devoted guidance he has given us; and for the love, respect, and admiration we have for him, we, the Beta and Press Clubs, do dedicate this volume of **THE PANTHER** to our principal, Mr. E. L. Stockman.

## THE GYMNASIUM



ALMA MATER

Sa-lu-da's waters flow near by;  
The pine tree reaches to the sky;  
The ridge doth gird a fertile land;  
There, Shrine of Honor, ever stand.

O selfless Mother, guide our youth,  
And lead us through the path of truth;  
For tenderest care thou dost bestow  
Our grateful homage may we show.

Bates-burg, Leesville, hail to thee,  
We now pledge our loyalty,  
And to thee our love we'll e'er sing,  
Alma Mater, hear thy praises ring.

## THE AGRICULTURE BUILDING





## OUR SCHOOL BOARD



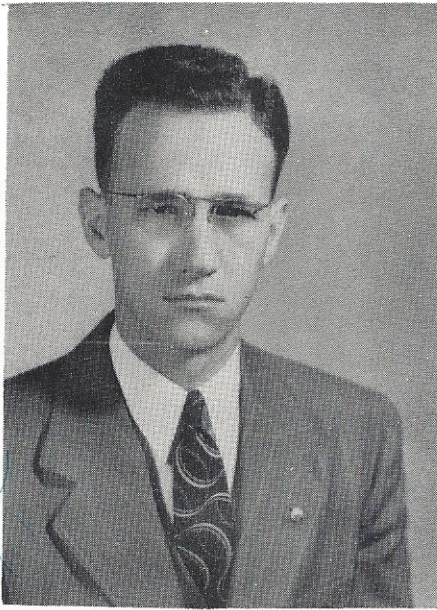
Left to right, seated: Mr. C. H. Taylor; Mr. V. E. Wessinger, Chairman; Mr. W. H. Taylor.

Standing: Mr. F. H. Hendrix; Mr. J. W. Parler, Vice Chairman; Mr. E. W. Sills.

Building and Grounds Committee: Mr. C. H. Taylor and Mr. W. H. Taylor.

THE PERSONNEL

*Crout*



J. M. Crout  
Superintendent

*E. L. Stockman*



E. L. Stockman  
Principal

*Eva D. Bethea*



*Mrs. N. A. Bates*  
Mrs. N. A. Bates  
Social Studies, Science



Mrs. P. W. Bethea  
Science



*Good Luck!*  
*Mrs. Fletcher*  
Mrs. L. A. Fletcher  
Commerce



John W. Gilbreath  
Coach, Mathematics



Mrs. J. T. Hite, Jr.  
English, Languages



Marguerite Marshall  
English, History

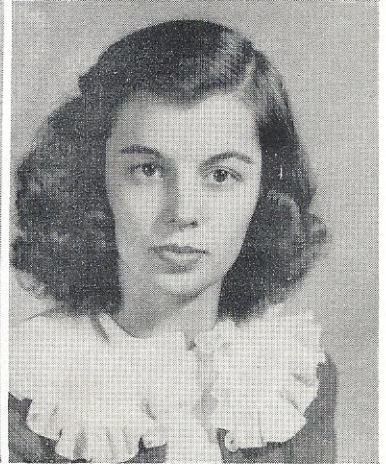
*Louise; Marguerite Marshall*



Mrs. C. C. Mitchell  
Lunch Supervisor



S. A. Murphy  
Agriculture



Leila Jane Nichols  
Secretary to Superintendent



*Emma M. Ritter*

Emma Ritter  
Librarian



*Shuford Shull*

Shuford Shull  
English



*Mary Ruth Taylor*

Mary Ruth Taylor  
History, Distributive  
Education



*John S. Timmerman  
Always  
with us*

John S. Timmerman  
Ass't. Coach, Math



Willie Mae Trotter  
Home Economics, Biology



Mrs. W. G. Derrick, Jr.  
Music

# THE STUDENT BODY

## STUDENT COUNCIL

Left to right, first row: Catherine Alexander, Virginia Campbell, Gladys Canada.

Second row: Charles Grandy, Franklin Robertson, Charles Shealy, Bennie Storey.

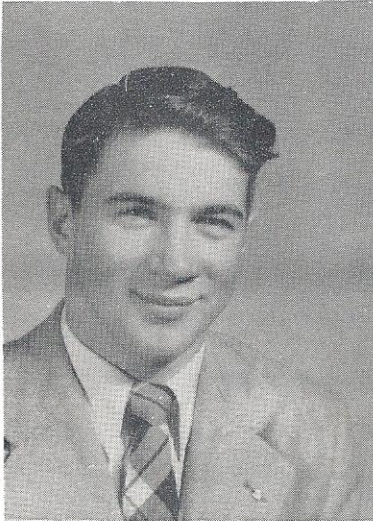
Third row: Carl Rogers, Franklin Swygert, John Wilmot Parler, Bobby Bouknight, Carl Boozer.

Fourth row: Mr. Stockman, Richard Campbell, Carroll Cockrell, Pickens Riser.

Adviser: Mr. Stockman



President

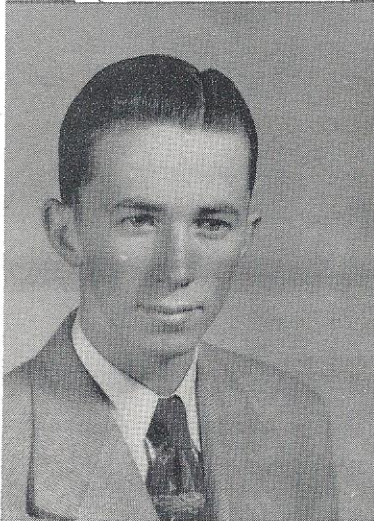


Carl Boozer

"If your boat is sinking low,  
Don't jump, my friend, But  
row, row, row."

Football(4,5); Basketball(4);  
Baseball (all 5); Block Club  
(4, 5); F.F.A (3,4,5); Class  
President (5); Student body  
Vice - President (5); Student  
Council (4,5); D. E. Club(4).

Vice President

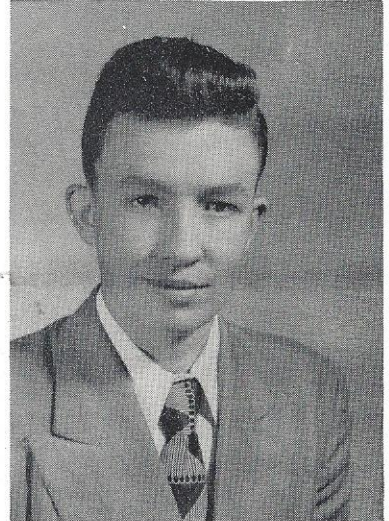


Connley Lybrand

"All of the fun in the world  
may be,  
But of all the fun it's squ-  
are dancing for me."

Block Club(4,5); Student Coun-  
cil(4); Class Vice-President  
(5); Baseball(3,4,5); Football  
(5); D.E. Club(4,5); Class Of-  
ficer (3).

Secretary-Treasurer



Henry Webb Vansant

"If it's a wit you wish to find,  
Look elsewhere - he has a  
mind."

Beta Club(3,4,5); Beta Club  
Secretary-Treasurer(4); Cl-  
ass Secretary-Treasurer(5);  
"Periscope" Staff (3).



Sara Amick (left)

"Let every man mind his own  
business."

Library Club(1,2); J.H.A.(2,  
3,4); Glee Club (1,2).

Frances Banks (right)

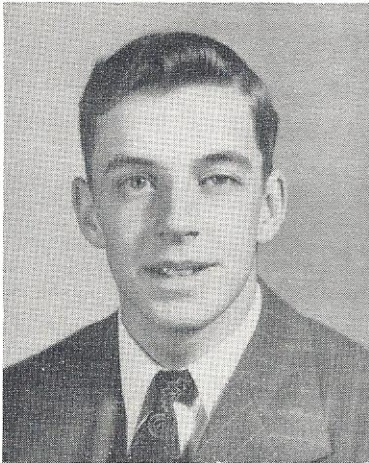
"Gentle in manner, sweet and  
kind."

A friend like her is hard to  
find."

Block Club (4,5); Basketball  
(2,3); Glee Club(3,4); Library  
Club (2,3).



*Good Luck!  
"Pee wee"*

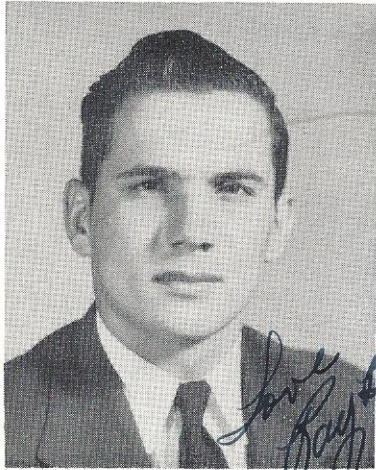


*Bob*

Bob Bouknight (right)

"A smile, a grin, always a friend."

Block Club (3,4,5); Baseball (2,3,4,5); Beta Club (3,4,5); Press Club(4); Class President(1,2); Glee Club (all 5); Basketball(3,4); Student Body President(5); Student Council (all 5); Beta Club President (4); Panther Staff (5).



Wendell Bedenbaugh (top left)

"By nature, honest; By experience, wise; Healthy by temperament and by exercise."

Baseball(4); Junior Play (4); Dramatics Club (4); F.F.A. Chapter (4, 5); Secretary-Treasurer D.E. Club (5).

*Love Ray Burkett*

Wilma Burkett (below)

"The truth is always the strongest argument."

Library Club President (5); J.H.A.(2,3,4,5); Glee Club (4).



Richard Campbell (lower right)

"Tho' the world seems in a whirl, the whirl for him is his girl."

Football(4,5); Student Council (4,5); Basketball Captain (4,5); Glee Club (4); Block Club (4,5).

Ray Burkett (above)

"Tho' the line be big and strong, hit it hard. You can't go wrong."

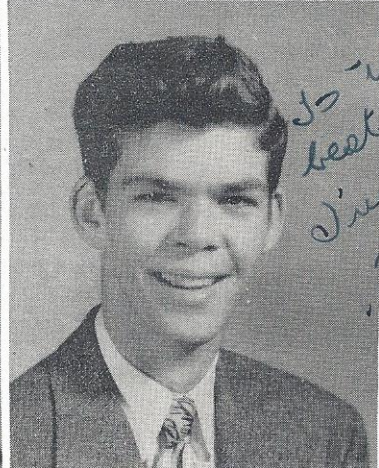
Football (all 5); Block Club President (4); Baseball(4); Basketball Manager (4).

Faye Bush (lower left)

"Never seek to tell thy love Love that's never told can't be."

Glee Club (4); J. H. A. (4); Dramatics Club (4);

*into good girl Faye Bush*



*is the best girl I've ever met "Dick"*

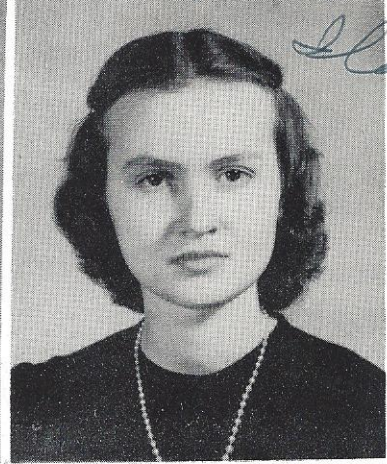
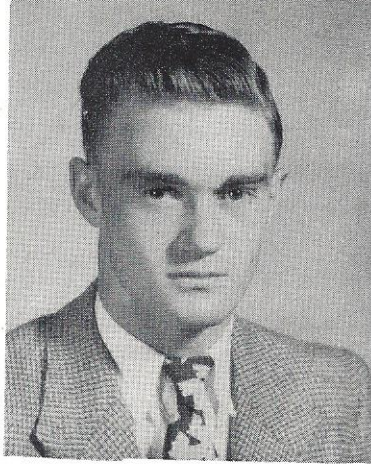
*you're a swell  
guy,*

*Ila Ann*

Carrol Cockrell ( left )

"He plays football with all his heart,  
And always plays his part."

Football (3,4,5); Block Club (4,5); Glee Club (4); Student Council (5).



Armand Hare ( below )

"A nut you want, a nut you see,  
If it's a nut to be found, Then the nut is he."

Baseball(all 5); Block Club (4,5).



Ila Ann Cook ( top right )

"What is worth doing at all  
Is worth doing well."

Beta Club (3,4,5); Glee Club (all 5); Periscope Staff (4)  
Dramatics Club(4); Basketball (3,4).



*you're swell  
"Betty"*

Eleanor Hare ( lower left )

"She smiles and the shadows depart."

J.H.A.(3,4); Junior Play (4);  
Dramatics Club (4); Press Club (5).



Betty Lou Fallaw ( above )

"Wise words may fall on unfruitful ground,

But kind works have no ending."

Secretary J.H.A. District #3 (4); State J.H.A. President (3,4); J.H.A. Club(3,4,5); Junior Play(4); Dramatics Club (4); Press Club(4,5); Editor of "Periscope" (5).



Mary Keller Hart ( lower left )

"Her smile is sweetened by her gravity."

Transferred from Tubman High School, Augusta, Ga.

J.H.A. Aiken High School (1)  
J.H.A. Harlem High, Georgia (1,2).

*you're a  
good ole  
thing!*



**Pearle Elizabeth Kneece**  
( above )

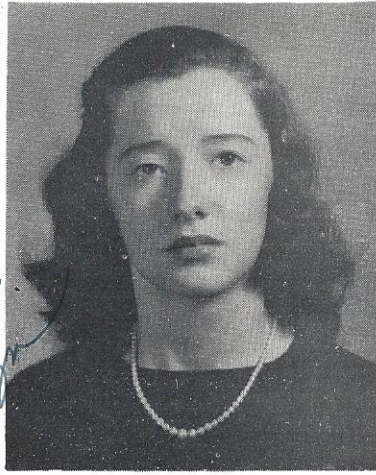
"There is too much beauty upon this earth for lonely men to bear."

Basketball(1,2,3); Beta Club (3,4,5); Press Club (4,5); Periscope Staff (5); Student Council(4); J.H.A.(4,5); Pres. D.E. Club(5); Junior Play(4); Dramatics Club(4); Panther Staff (5).

**Barbara Ann Langford**  
( lower left )

"How much better it is to get wisdom than gold. And to get understanding rather to be chosen than silver."

Beta Club Pres.(5); Editor of Panther(5); Glee Club(all 5); Periscope Staff(4,5); Dramatics Club(4); Marshall (3,4); Beta Club(3,4,5); Press Club (all 5); Beta Club Pres. (5).



**Carolyn Herlong** ( top left )

"Boast not thyself of tomorrow; for thou knowest not what a day may bring forth."

Press Club(all 5); Beta Club (3,4,5); Glee Club(all 5); Dramatics Club(4); Marshall(3,4); Ass't Editor of The Panther(5); Ass't Editor of Periscope(5); Beta Club Reporter (5).

**Peggy Holston** ( right )

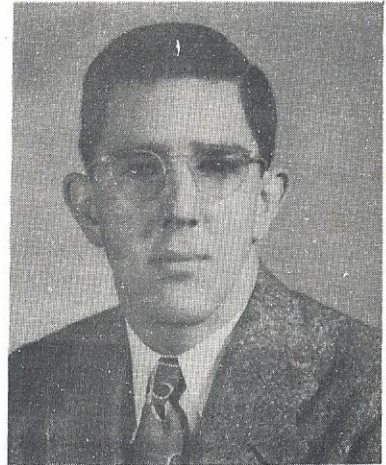
"Re-Rah-Ray, She is the jolliest girl all the day."

Press Club(4,5); Block Club (4,5); Glee Club(all 5); Basketball(all 5); Junior Play(4); Dramatics Club (4).

**Hamilton Kyzer** ( below )

"He sings a tenor, plays at center, and is always a winner."

Vice Pres. Block Club (4); Football(3,4,5); Glee Club(4); Basketball (2,3).



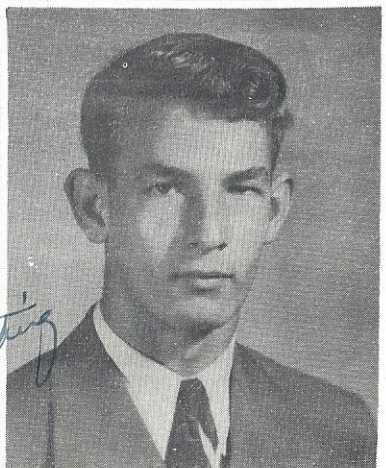
**Bobby Lewis** ( lower right )

"He is gentle and kind, he can play ball any old time."

Football(4,5); Baseball (3,4,5); Block Club (4,5).



*Always be  
best in everything  
you do.  
Love,  
Barbara Ann*

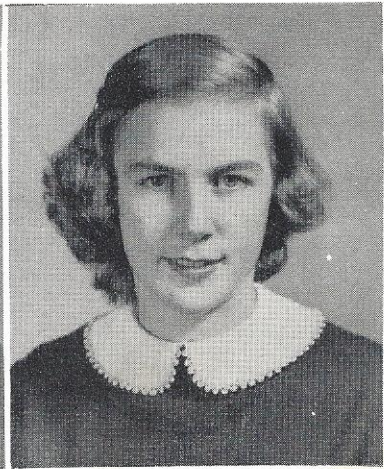




Shirley Love ( top left )

"The quarrel of lovers is the renewal."

Glee Club(2,3,4); J.H.A. Club (3,4); Junior Play(4); Dramatics Club (4).



Barbara Nichols  
( top right )

"She is a sport, the best of all.

Win or lose, she'll never fall."

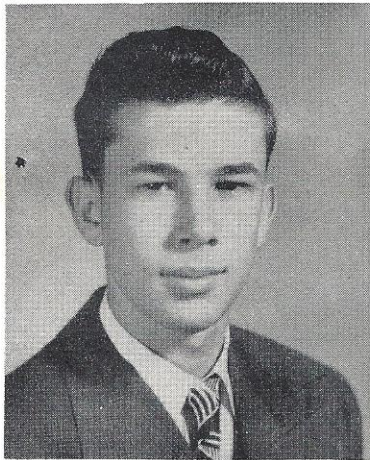
Press Club(all 5); Beta Club Secretary(5); Glee Club (all 5); Student Council(4); Block Club(4,5); "Periscope" Staff (3,4,5); Captain of Basketball (3,4,5); Junior Play(4); D.A.R. Award(4); Dramatics Club(4).  
*Cheer leader*



John Wilmot Parler (below)

"None but himself can be parallel."

Beta Club (4,5); Press Club (4,5); Baseball(1); Basketball (5); Glee Club(2); Block Club (5); Periscope Staff (5).



Jean Rikard (lower left)

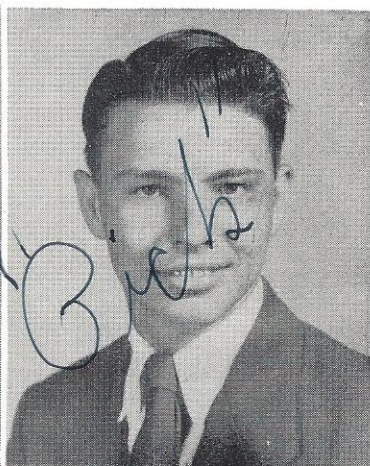
"Sweetly come, sweetly go,  
Sweetest girl you'll ever know."

Glee Club(3,4,5); Basketball (3,4,5); Cheer leader (4,5); Press Club(3,4,5); Block Club (3,4,5); "Periscope" Staff(4); Dramatics Club (4).

Edna Norris ( above )

"As bright a girl as one shall see in many a summer's day."

Beta Club(3,4,5); Class Secretary-Treasurer (4).



Pickens Riser (lower right)

"Takes a joke with a smile.  
He can throw a baseball a half mile."

Baseball(3,4,5); Student Council President (4); Student Council(4,5); F.F.A. (3,4,5); Block Club (4,5).

*Edward Shealy*



*Love, Helen*

Helen Shealy ( right )

"Small package tho' there be,  
Often contains more than one  
can see."

Student Council(3); Glee Club  
(all 5); Press Club(2,3,4,5);  
Beta Club(3,4,5); Periscope  
Staff (1).



Kathleen Shealy (above)

"A good old pal is Kat, A  
good little girl is she, As full  
of fun and wit as ever a girl  
can be."

Glee Club (all 5); Beta Club  
(3,4,5); Beta Club Vice-Pres-  
ident(4,5); Student Council(3,  
4).

Edward Shealy (top left)

"Tis better to say nothing  
than to say too much and  
mean nothing."

F. F. A. Chapter Member (3,  
4,5).

Marion Shealy ( below )

" O fertile brain and massive  
heart,  
He always acted well his  
part.

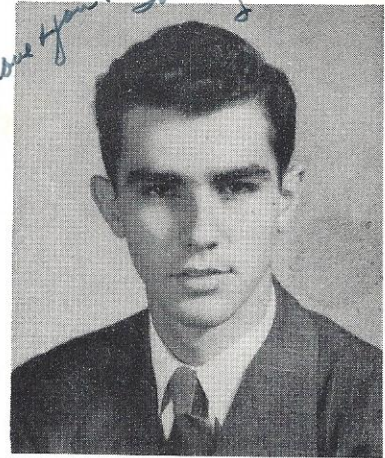
Student Council(2,3,4); Press  
Club(2,3,4); Block Club(3,4);  
Class Pres.(3,4); Basketball  
(2,3,4); Glee Club (all 5).

Dorothy Swygert (lower right)

"I do not know of any way so  
sure of making others happy  
as of being so one's self."

J. H. A. (2,3,4,5); Glee Club  
(4,5).

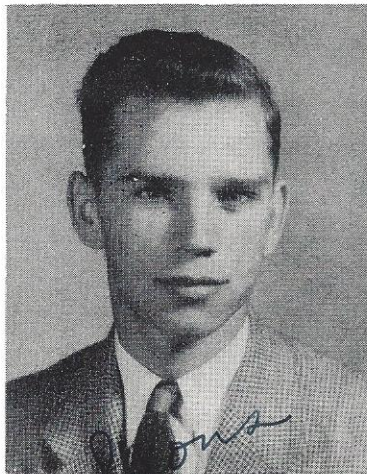
*I love you!! Jimmy!!*



Jimmy Simons (lower left)

"A football player, basketball  
and baseball player too,  
What is it he doesn't know  
how to do?"

Baseball(2,3,4,5); Basketball  
(2,3,4,5); Football(4,5); Block  
Club (4,5).

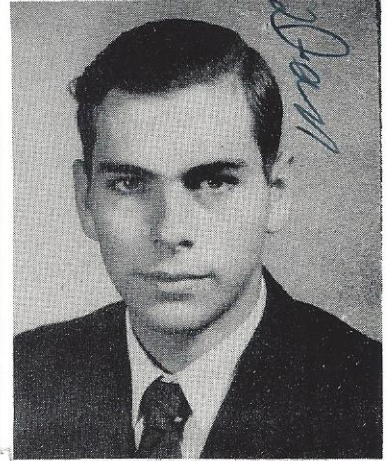
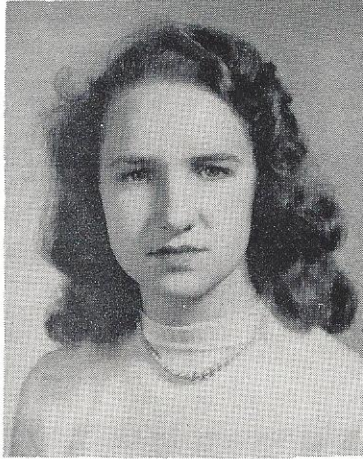


*Jimmy Simons*

Helen Ward (top left)

"Tis better to have loved and lost than never to have loved at all."

Periscope Reporter(5); Press Club (5).



Frances Celeste Williams ( below )

"Hair of brown, eyes of gray, She is your friend any day."

J. H. A. (4); Press Club (5); Panther Staff(5); J.H.A. Treasurer (4).

Daniel Warner (top right)

"As far as we can see a farmer he'll be, The man who likes to plow."

F. F. A. Chapter Member (3,4,5).



Joan Whitman ( lower left )

"Her eyes as stars of twilight fair; Like twilight too, her dusky hair."

Glee Club(3,4,5); Press Club (3,4); J.H.A. (3,4,5); J.H.A. Reporter (4).

*Sallie Warner*

Sallie Warner ( above )

"We that live to please must please to live."

J. H. A. Member ( 3,4,5 ).



Thelma Watkins (lower right)

"Let thy speech be better than silence, or be silent."

J. H. A. (3,4,5); Glee Club(2, 3,4,5); D. E. Club(5); Press Club (2,3,4,5).

## CLASS POEM

Alas, we've reached a goal of every youth,  
Yet pained by the deepest sorrow;  
For we must leave what we've known as the truth,  
Our classmates, for a new life tomorrow.  
So we stretch out our hands and hope to find  
Friends like we're leaving, both true and kind.

Our future years are yet unknown to us;  
There's no one to forecast the years.  
Yet we hope to find the future e're thus:  
A future with much joy and few tears.  
So we're trusting that good to us shall fall  
Very soon--far off--at last, to all.

Our days, 'twill soon be those that are no more  
When we shall enter this dear 'ole place.  
Our paces today shall be as those before,  
E'en though our thoughts are upon our faces.  
'Tis true our high school days are ended here,  
The place that's grown to us so dear.

Though we'll be divided by time and place  
To seek the goals that we've decided;  
But hoping to meet again face to face,  
The class of '49 that'll soon be divided.  
Thus the saddest farewell this one must be,  
Cherishing the years we've spent with thee.

Carolyn Herlong, Class Poet

## CLASS SONG (Tune--"The Olden Songs")

To thee, dear B-L our song we bring,  
Oh, may this message clear forever ring,  
Within our hearts a sadness comes to dwell,  
Tho' as we go believe we love you well  
Thy voice in echoes dear we now recall,  
And with thy challenge we shall never fall,  
Our hearts, our lives, in part, we owe to you,  
And to thy mem'ry we shall e'er be true.

Chorus: Within these walls we've worked thro' years gone by,  
Thy teachings to our lives we'll e're apply,  
To our dear Alma Mater now, we send  
This message, as we reach our journey's end.

To you, we pause to pay our tribute, now,  
To love and cherish thee will be our vow,  
We'll n'er forget the happy moments we  
Have worked with friends in perfect harmony.  
As we look back on all our high school days,  
We pause to brush aside a tear and raise  
A prayer, that you'll abide within our hearts,  
Tho' varied paths may take us far apart.

---Barbara Ann Langford

COLORS: Red and White

FLOWER: Red Rose

MOTTO: "A little group of wise hearts is better than a  
wilderness of fools."

## SENIOR CLASS HISTORY

In September of 1944 ninety-one kneeshaking graduates of the Batesburg and Leesville Grammar Schools were greeted with stares and giggles upon entering the B-L auditorium. Realizing that we were to become a part of the family at B-L Hi, we knuckled down to the task of making ourselves at home---this wasn't too easy. Being new creatures roaming the halls, we often found ourselves in the wrong class rooms. After a very short time, we discovered that there would be many trying moments in our lives. Such things as "rat day" and six weeks' tests were most trying. Most of us didn't know what difficult tests were until our first Math test. After struggling with civics, science, math, and English for nine long months, we certainly welcomed a three months' vacation.

Upon entering B-L in September of '45, we had the joy of being "upper-classmen". Of course, we felt very experienced. Many of us participated in football, basketball, and baseball. Some of us were asked to serve at the Junior-Senior Banquet, and we highly anticipated the "big night". But--before serving, there was the peeling of bushels of potatoes, and afterwards, there was the washing of many dishes. T'was something we hadn't expected. Thus another year passed.

The year 1946-47 was another busy year. Some were lucky enough to be invited into the Beta Club. Lessons were getting more difficult, but we buckled down to studying, so it wasn't too hard.

At the beginning of the year 1947-48, we found ourselves Juniors although we had been in high school three years already. This was due to the change to the twelve year system for all South Carolina schools. We were also the highest grade in school and therefore felt very important. Many of our classmates were in the Glee Club, and made the trip to Winthrop College in the Spring. During this year we gave a three act comedy entitled "The Girl Who Looks Like Me."

September 1948 found us definitely Seniors and we were more than proud of our standing. Our dream was at last realized. The day to be measured for our class rings soon came. Our Political Science Class visited such places as the civil court in Lexington, the State Institution and State Legislature. The square dance and senior play were also highlights of the year. Since our first day in high school we had awaited the day when we could go to Washington, D. C. Finally, on April 6, that day arrived--We were up and on our way by five o'clock in the morning and arrived there around six that evening. We were tired but excited. We ate supper at Union Station, looked around, tried the escalators, went to the hotel, and to bed. For the next two days we arose early and visited the following places; the Capitol building, both houses of Congress in session, Robert E. Lee's Memorial, the Zoo, The Treasury Department, the Library of Congress, Capitol Theater, Smithsonian Institute, New National Museum. On the fourth day, we returned by way of Natural Bridge, Virginia. Such a trip comes only once in a lifetime. In May we were honored with a lovely banquet by the Juniors. However, the excitement was far from being over---Commencement was drawing near. Those days of marching up and down the aisle and across the stage until we finally got in step with the music finally came. Those days were very short. In fact, too short, for we realized that we soon would march out, never to return as students again. And now as graduation is here, we are reluctant to leave these halls and are prone to cry:

"Backward, turn backward, O Time in Thy flight, and make me a Freshman again just for tonight."

"But alas 'tis impossible and as we go, may we each and all continue to advance until at last we really attain the greater things nor scorn the base degree by which we did ascent."

Ila Ann Cook  
Class Historian

## Senior Class Will

We, the Senior Class of 1949, being in normal mind and realizing that we shall soon pass out of the life of Batesburg-Leesville High School, do hereby make this last will and testimony. To Wit:

Item 1. To the underclassmen we will our dignity, hoping they become dignified by the time they finish high school.

Item 2. To the Junior Class our seats in the front of the auditorium and the privilege of being the first to leave the auditorium.

Item 3. I, Eleanor Hare, do hereby will to little Heyward Hare a bottle of vitamin pills, hoping he will soon become a tall, dark, and handsome man and attract all the girls' attention. P. S. Be careful, Heyward, all "Rabbits" are alike.

Item 4. I, Wilma Burkett, do hereby will and bequeath my love for "Spuds" to Nelda Der-rick.

Item 5. I, Pearle Kneece, do hereby will and bequeath my dates and good times to Freddie Holston.

Item 6. I, Richard Campbell, do hereby will a small portion of the Ag. Building to Jimmy Rikard so he can smoke in peace next football season.

Item 7. I, Sara Amick, do hereby will and bequeath my love for Calk's to "Jackie" Smith, hoping that she has as good a time there as I have had.

Item 8. We, Frances Banks and Edna Norris, having A's in conduct, do hereby will to Miss Marshall a new pair of glasses so she can see who does the eating in sixth study hall.

Item 9. I, Ila Ann Cook, will my height to Ronnie Carter so he will get high in the world.

Item 10. I, Hamilton Kyzer, do hereby will and bequeath to Jimmy Rikard a jet car so he won't have the same experience with cops that I had.

Item 12. I, Sallie Warren, do will this pack of paper and a pencil to Miss Taylor so she can issue a good many more discipline slips next year than she did this year.

Item 13. I, Marion Shealy, will to Tommy Are my old flash camera, hoping he will do better with it than I did.

Item 14. We, Faye Bush, Dorothy Swygert, and Joan Whitman, do hereby will and bequeath our silliness to Miss Trotter and hope that she may enjoy them as much as we have.

Item 15. I, Edna Norris, do will my good physics grades to Mrs. Bethea so she can give them to someone who will appreciate them next year as much as I have this year.

Item 16. I, Helen Shealy, do will my knowledge of history to Bob Holcombe.

Item 17. We, Wilma Burkett and Sara Amick, do hereby will and bequeath to Miss Trotter a pencil and pack of paper so she can keep up with the other J. H. A. girls and not have as much trouble as she did with us.

Item 19. I, Carolyn Herlong, do hereby will a gray hair to Mrs. Hite so I won't get gray from worrying before she does.

Item 20. I, Mary Keller Hart, do will my love for Shakespeare's tragedies to Joyce Anderson, hoping she will do them more justice than I have done.

Item 21. I, Betty Lou Fallaw, do will my fickle eye to Betsy Shealy and hope that she will enjoy it as much as I have.

Item 22. I, Bob Bouknight, do hereby will to Billy Horne my homely and understanding looks, especially when I'm around girls.

Item 23. I, Connley Lybrand, do hereby will and bequeath, to Bill Strange, Jr. a rabbit's foot and hope it will bring him better luck in matching.

Item 24. I, Frances Banks, do hereby will and bequeath to Pansy Gantt my love for "Lolly-pops". It seems she likes them more than I do.

Item 25. I, Dan Warner, do hereby will and bequeath to Joyce Anderson this roll of tape to close some people's big mouths.

Item 26. I, Dorothy Swygert, do hereby will and bequeath to Franklin Swygert a '41 Plymouth of his own so that he may still have a way to see his girl in Augusta after July 2. I hope he has as much fun in it as he has had in others.

Item 27. I, Wendell Bedenbaugh, do will Bill Strange, Jr. some of my strength so he can take his father's place.

Item 28. I, Armand Hare, do will to Richard Prater some of my height, so he will be as tall a man as I.

Item 29. I, Edward Shealy, will my love for lipstick to Omar Eargle.

Item 30. I, Shirley Love, so will and bequeath a "pully-bone" to Jimmy Rikard to help him pull through school.

Item 31. I, Pickens Riser, do will my ability to get along with girls to J. P. Temples.

Item 32. I, Frances Williams, do will some of my hair to Mr. Timmerman; he seems to need it.

Item 33. We, Helen Ward and Kathleen Shealy, do will and bequeath to Gladys Canada and Betsy Shealy, respectively, our quiet and sophisticated manner.

Item 34. We, Jean Rikard, Barbara Nichols, and Peggy Holston, do will to Coach Timmerman a wig to replace all the hair he lost while coaching us basketball.

Item 35. I, Barbara Ann Langford, do hereby will and bequeath my straight skirt to Melba Taylor, and hope she can walk more lady-like with it on than I did.

Item 36. I, Carrol Cockrell, do will my ability to dodge Mr. Crout and Mr. Stockman to "Bunk" Grandy, so he won't get caught smoking all the time.

Item 37. We, Frances Williams and Frances Banks, do hereby will and bequeath these pencils to "Kitty" Williams so she won't always be begging for one.

Item 38. I, Ray Burkett, do will to Bill Strange, Jr. a football with the hope that he won't have as rough a time with it as I did.

Item 39. I, Henry Webb Vansant, do will and bequeath my knowledge of algebra to Herman Lewis. May he use it to better advantage than I did.

Item 40. I, Bobby Lewis, do will my love for bookkeeping to Donald Padgett.

Item 41. I, John Wilmot Parler, do hereby will and bequeath my ability to slip across the street without getting caught to Bennie Storey and hope that he will have as much luck as I did.

Item 42. We, John Parler and Connley Lybrand, do will to Fred Bodie our ability to eat pecans in study hall without getting caught.

In witness thereof we, the undersigned, hereby set our names:

Written by Edna Norris

Witnessed by---Betty Lou Fallaw  
Dan Warner  
Frances Banks.

## Senior Class Prophecy

Dreams are usually vague and easily forgotten, but the one I had Friday night keeps coming back to me over and over as if it had a message for me.

It seems I dreamed for ages, but I did not mind for the dream was of my classmates of '49, my friends.

Maybe it really was ages for the calendar says 1960, eleven years from now. That's strange, I don't ever remember dreaming that far in advance.

Wendell Bedenbaugh runs the largest store at the Circle but he isn't bragging this time. He says that he can't make ends meet. It seems he still has the old habit of giving candy to all the pretty little girls.

On my way to Bates Center by train, I see a construction company putting up a gigantic building. It looks as if it is going to be beautiful. "What's this? C. Boozer, chief engineer?" "Don't I know a C. Boozer?" Of course, Carl Boozer. My, hasn't he come far?" I haven't a chance to speak now, but maybe, later.

Well, Wilma Burkett still likes a store for she now has one of her own, The "Petite" Dress Shoppe. She is very successful, or I would think so by the looks of her store.

Reading the paper which is owned and operated by Dan Warner and Edward Shealy, I find a "Chit-Chat Sewing Club" has been organized. Reading on down I see the charter members are, as formerly known, Sallie Warren, Dorothy Swygert, Faye Bush, and Sara Amick. I just can't believe my eyes. Those four girls were always such quiet girls and now belonging to the "Chit-Chat Sewing Club."

I see, also, in this paper that Mr. and Mrs. Richard Campbell are having a house warming. Looks as if his high school sweetheart made that fortune he said she would have to have before he married her.

I see that Henry W. Vansant has published a new novel, And There Goes the Tide. I read his other two and they were very good. This one must be, too.

Dr. John Parler has found that long awaited cure of the most dreadful of diseases. I'm glad I could say "I knew him when..."

Now a building attracts my attention and upon closer observation I see that it is the hospital with Betty Lou Fallaw as head nurse. She is assisted by Frances Banks and Edna Norris. I wonder how they happen to be at the same place.

I have learned from the conductor that this train is owned by the Hare and Cockrell Company. By questioning further I find Mr. Hare is Armand Hare and Mr. Cockrell is Carrol Cockrell. They always liked to be lazy and now they can afford to be.

Getting off the train I see a tall, handsome Marine who looks familiar. Why, I believe it is Bob Lewis, It is. Gosh, he looks wonderful and an officer, too.

After I rest a while I think I'll take in a baseball game. The Yankees are playing the Pirates.

Upon arriving, I find my seat is next to an old classmate, Bob Bouknight. Bob tells me he is owner of the airport at Bates Center. For fun he says he is a test pilot. Good ole' Bobby. He always was a man of iron nerves.

The loud speaker is giving the line up and playing for the Yankees are two men I know, Pickens Riser, who is pitching, and Jimmy Simons, playing short stop. I know before the game starts who'll win, the Yankees, of course. I also learn that Pick Riser has pitched a season of no hitters.

After the game I learn that Jimmy and Peggy are married and are very happy. Peggy, of course, was Peggy Holston. Isn't that wonderful?



The next morning I decided to observe some classes in a nearby high school. After arriving I find the principal is none other than Hamilton Kyzer. I don't see how he can coach, too, but he seems to find time for a state championship team in football. Not bad.

First, I think I'll sit in on an English class. The teacher is talking away and only one person can have that voice. Carolyn Herlong. Mr. Kyzer tells me she is a very capable teacher. I learn from her that she is married to that certain tall, handsome man.

Further on down the hall Mary Keller Hart is teaching Home Ec. Her girls have won first place in sewing at the state fair.

Barbara Nichols, who is now Mrs. Marion Shealy, is the Physical Ed. teacher. She tells me Marion is supervisor at the G. E. Motor Company.

In the next room I hear the clicking of typewriters. Typing always interested me so I stop for a moment. Helen Shealy, who is an old maid, is teaching. Looks as if she fulfilled both of her ambitions.

Before I leave I stop by the office to thank the principal for his kindness but instead of finding the principal, I find his secretary, Ila Ann Cook, now Mrs. Grandy. She's still as attractive and smart as ever.

I think I'll take in a movie before I leave. A good one is playing at the Ritz with Eleanor De Belle. After stumbling over half a dozen people, I find a seat. I see before my eyes Eleanor Hare playing the lead. She's changed her name to suit her personality; she's playing the role of a snob and cast with her as the "sweet young thing" is Jean Rikard. People don't change much after all. I really enjoyed the movie.

I get up to leave and I step all over someone's toes. I turn to apologize and who could it be but Connley Lybrand of the Navy. Despite the hisses we talk awhile. Man, he's handsome in uniform.

I have some time left before I catch my train so I'll go to a dress shop. Maybe I'll even buy a dress. Some beautiful models are called out and whom do my eyes behold but Barbara Ann Langford. She always did have a nice figure; therefore, I'm not too surprised-She doesn't recognize me so I won't speak. Besides, her attention is on that blond fellow over there.

Ray Burkett has really made a name for himself. I see he is now a professional football player. I always did think he was a wonderful player. And he is still as handsome as ever.

Back home it is wonderful to be among neighbors and familiar surroundings. But wait, there's someone in the empty building. Well, I declare, Thelma Watkins has opened a kindergarten.

Oh, yes, those girls, Joan Whitman, Frances Williams, Helen Ward, Pearle Kneece, and Shirley Love, who married when school was out in '49 are all very happy. Some have children and others not, but nevertheless, happy.

About me, I teach history in my old home town and I do love it. It's U. S., that dread of all students. It really is a tough course and that temper I showed in high school is really showing up now.

Let me remind you again that all this was a dream. It was such a good dream I thought you'd like to hear it.

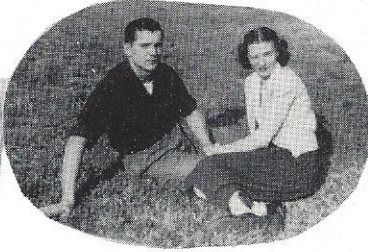
"All that we see or seem is a dream within a dream."

Kathleen Shealy  
Prophet

SENIOR



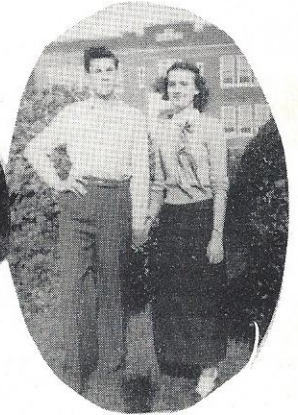
Cutest



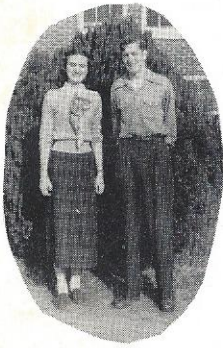
Most Popular



Biggest Flirts



Most Likely to Succeed



Most Courteous



Most Conceited



Friendliest



Most Athletic



Most Intellectual

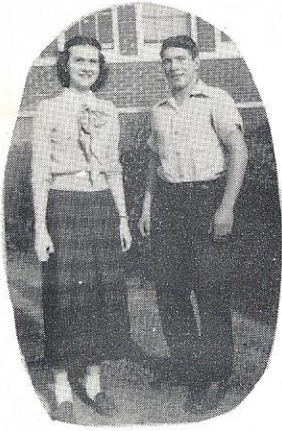


Wittiest



Most Scatterbrained

STATISTICS



Most dependable  
and  
Best all around



Best Sports



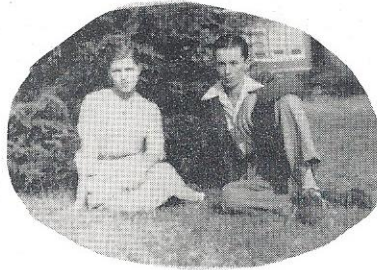
Neatest



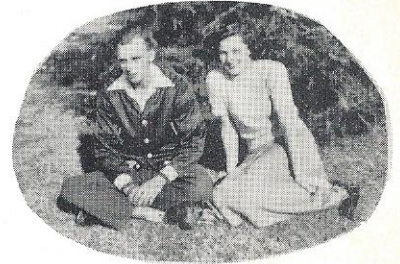
Most Timid



Laziest



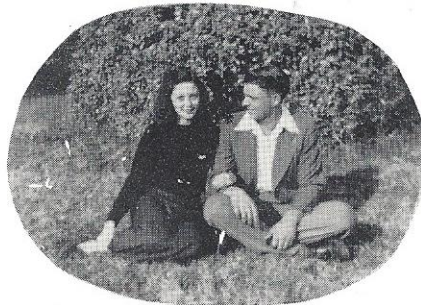
Most Talkative



Prettiest Girl  
Best Looking Boy



Most Original

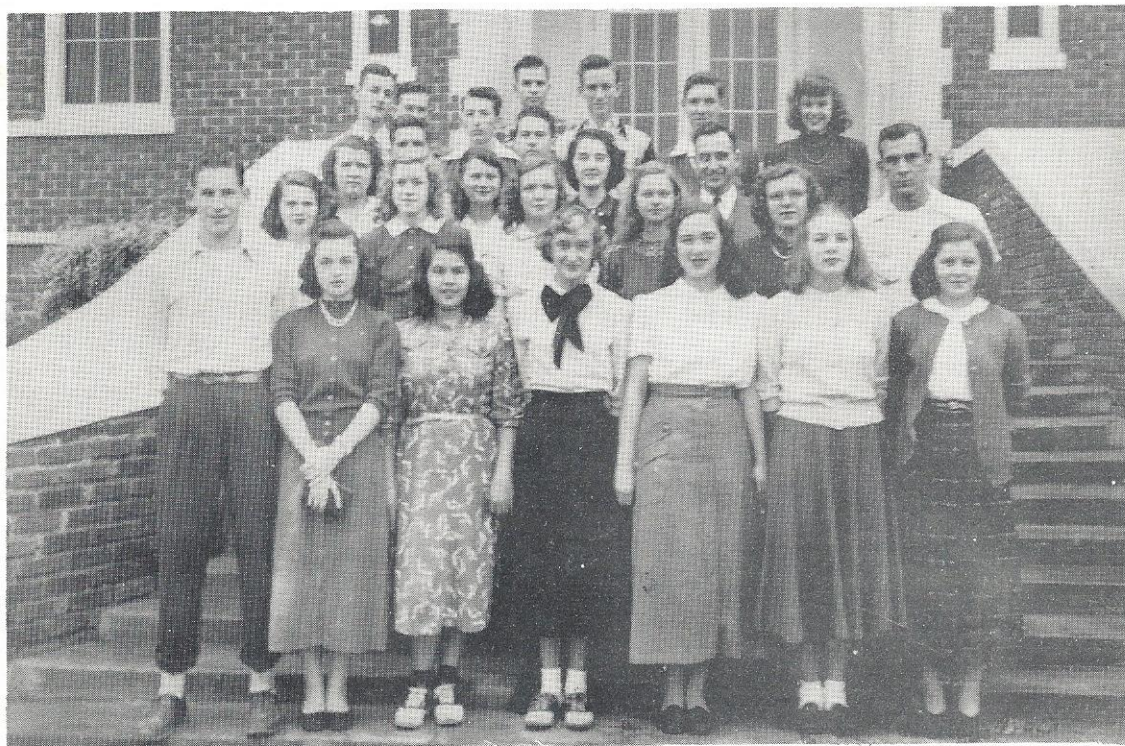


Most Versatile



Biggest Braggers

## CLASS OF



Left to right, First row: Jimmie Rikard, Gloria Copeland, Anne Quattlebaum, Catherine Williams, Mary Jo Hoover, Virginia Campbell, Betty Keisler.

Second row: Rosaline Cook, Betty Adams, Kathleen Sonn, Nelda Derrick, Louise Eargle, Ralph Smith.

Third row: Martha Price, Sara Kelly, Helen Drafts, Mr. Shull.

Fourth row: Marion Lewis, Arthur Wilson, Charlie Hite.

Fifth row: John Wendell Shealy, Vernon McCullough, Charles Duncan, Robert Addy, Arthur Wilson, and Robin Brabham.

Not shown on picture: Rembert Durst

President  
Vice President

Charles Grandy  
Ted Oxner

# FIFTY

Secretary-Treasurer Sara Kelly

Left to right, first row: Franklin Swygert, Betty Bouknight, Bette Fulmer, Peggy Whitman, Hazel Perdue, Margie Dellinger, Christine Cockrell, Doris Cockrell.

Second row: Jacqueline Smith, Lilla Stevens, Mildred Oxner, Julienne Oxner, Vienna Smith, Miriam Weathers, Evelyn Seigler, Doris Whiteside.

Third row: W. L. Jones, Charles Grandy, Billy Horne, Jeanette Holston, Sara Ergle, Mavis Padgett.

Fourth row: Doyle Goff, Thomas Are, Donald Padgett, Ted Oxner, Bennie Storey, and Miss Marshall.



# CLASS OF



Front row, left to right: Grace Berry, Joyce Anderson, Janet Rives, Joan Keisler, Melba Taylor, Elizabeth Campbell, Miriam Shealy.

Second row: Gladys Norris, Pansy Gantt, Marion Moore, Lois Padgett, Frances Hall, Phoebe Herlong, Charles McGee.

Third row: Barbara Harmon, Sara Joyce Hite, Carole Ann Flowers, Jane Davis, Mary Dickert, Gail Hendrix, John Warren, Keith Bedenbaugh.

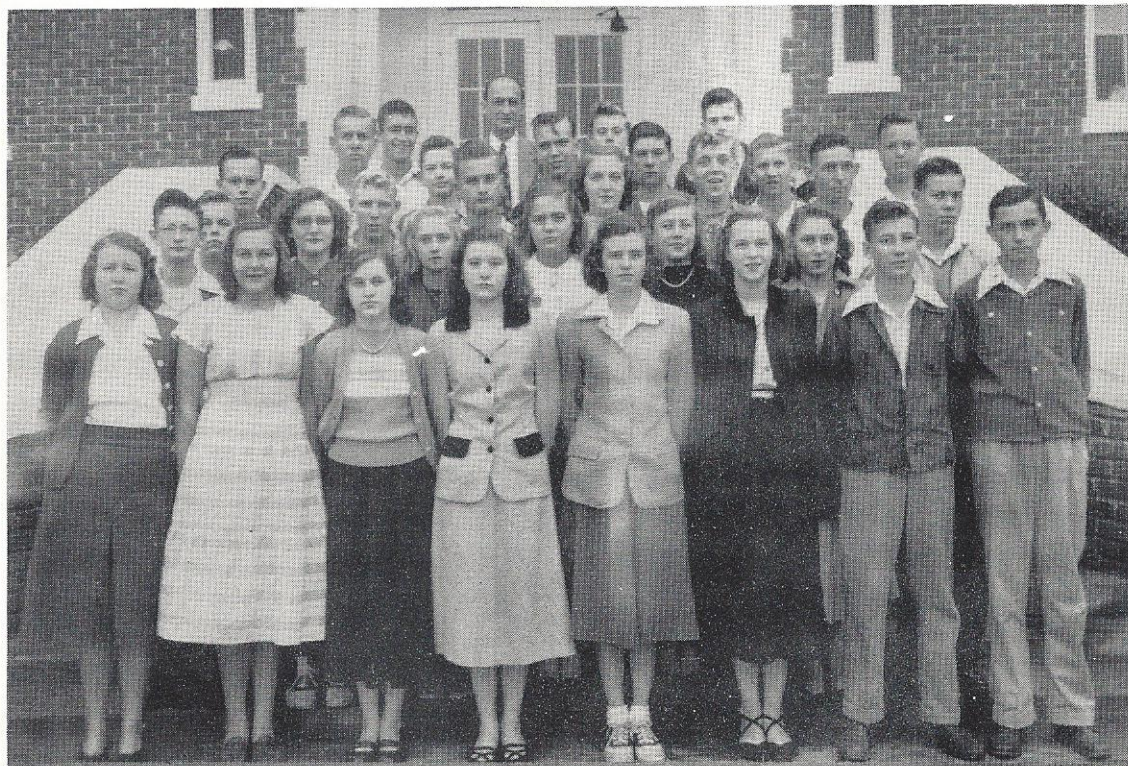
Fourth row: D. C. Rhoden, George Huggins, Charles Shealy, Harold Attaway, Bland Hartley, David Boozer, Thomas Johnson.

Not shown: Roy Burkett.

President  
Vice President

Charles Shealy  
Herman Lewis

## FIFTY-ONE



Left to right, First row: Wilma Rae Shealy, Jeanette Temples, Josephine Aull, Joan Boozer, Dorothy Risinger, Sara Ann Shealy, Shaw Langford, Doyle Bedenbaugh.

Second row: Jimmy Hart, Annie Mae Trotter, Marilyn Spilliards, Doris Seigler, Martha Ann Bryan, Betty Jean Hite, Carroll Goff.

Third row: Kenneth Duncan, Robert Cockrell, Billy Wise, Jeanette Gantt, George Litchfield, Robert Roberson, Wade Smith.

Fourth row: Wayne Goff, J. P. Temples, Dwight Hall, Wyman Shealy, Carl Rogers, Brady Nichols.

Fifth row: James Riley, Mr. Timmerman, Herman Lewis, Paul Amick.

Not shown: Nadine Padgett.

Secretary: George Huggins  
Treasurer: David Rawl

# CLASS OF



## Section A

President	Gladys Canada
Vice President	Betsy Shealy
Secretary	Ann Wilson
Treasurer	Carol Aull

Section A. Left to right, first row: Nelle Eargle, Thera Crout, Annelle Cockrell, Mr. Gilbreath, Ruth Caughman, Violet Epting.

Second row: Derrell Boatwright, Ronnie Carter, Billy Courtney, Derrell Crapps, Billy Fox, Hollie Eargle, Fred Bodie, Frank Enlow.

Third row: David Elkin, Ronelle Clamp, Jane Adams, Jackie Eadie, Wyman Banks, Joyce Ertle, Doris Anderson, Danselor Buzhardt.

Not shown: Mary Lou Barnes, Julia Drafts, Henrietta Hartley.

Section B. Left to right, first row: Conrad Hutto, Prescott May, Duene Lewis, Sammy Parler, Purman Gunter, K. J. Rogers, Otis Frazier.

Second row: Heyward Hare, Martha Bagwell, Betty Ruth Bradshaw, Carol Aull, Katherine Alexander, Marilyn Shull, Joan Quattlebaum, Betty Bedenbaugh.

Third row: Miss Ritter, Danny Matthews, Zelma Hartley, Betty Jones, Margaret Oswald, Betty Long, Betty Hartley.

Fourth row: Patty Lindler, Billy Mullinax, Gladys Canada.

Not shown: Robert Lybrand.

Section C. Left to right, first row: Joe Smith, John Swygert, Ray Smith, Joe Watson, S. J. Shealy.

Second row: Betsy Shealy, Mary Carole Taylor, Ann Wilson, Annette Snelgrove, Dorothy Ann Shealy, Bill Strange.

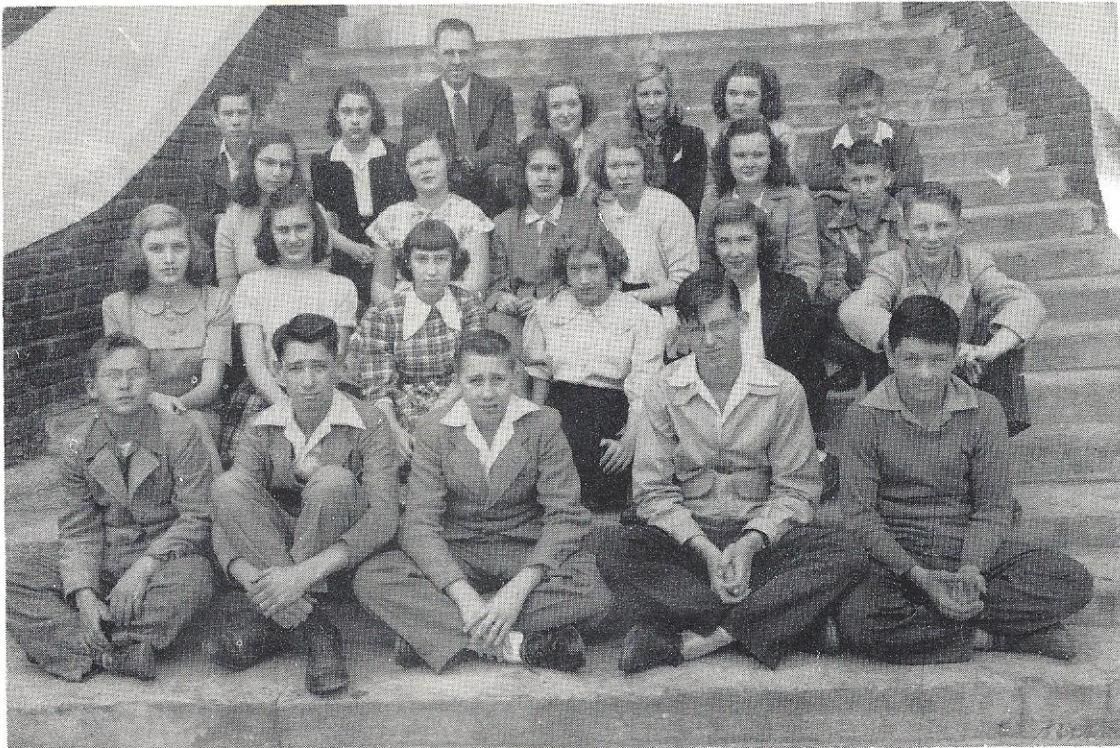
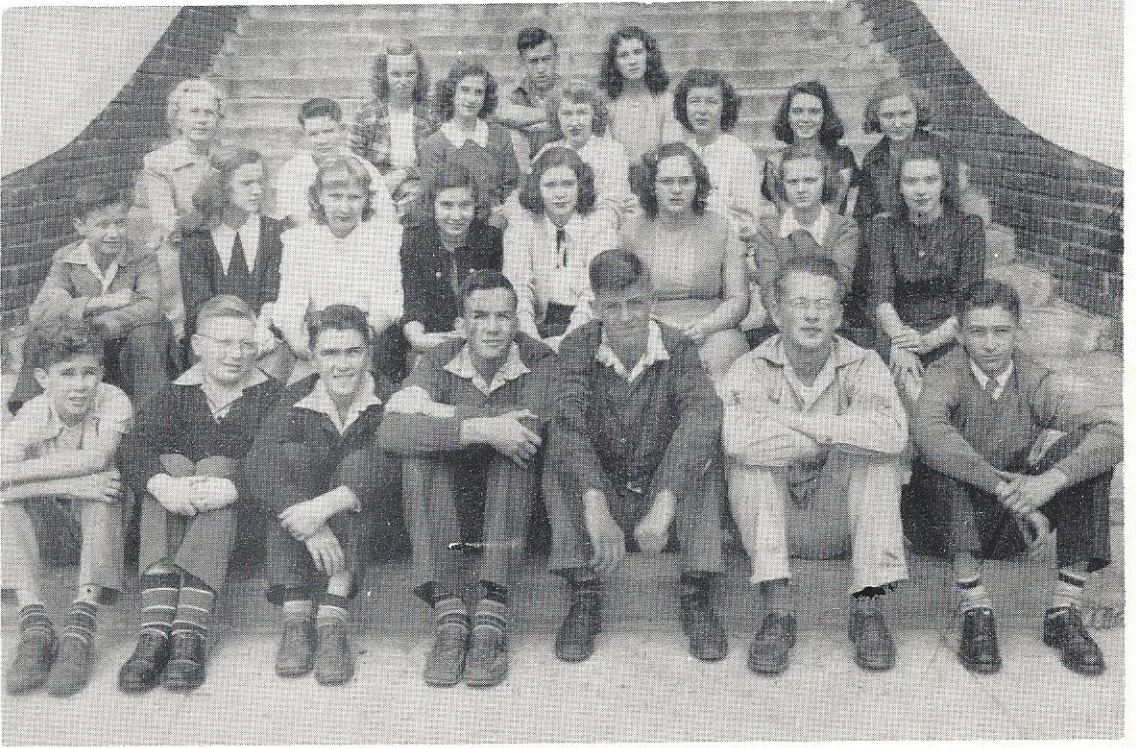
Third row: Dorothy E. Shealy, Adrienne Shealy, Shirley Shealy, Betty Smith, Joyce Shealy, Hoyt Winn.

Fourth row: Junior McCullough, Novie Shealy, Mr. Murphy, Freida Ann Smith, Ernestine Senn, Shonee Puckett, Delmas Lybrand.

Not shown: Rachel Shaw, Frank Keisler, Jimmy Maroney.

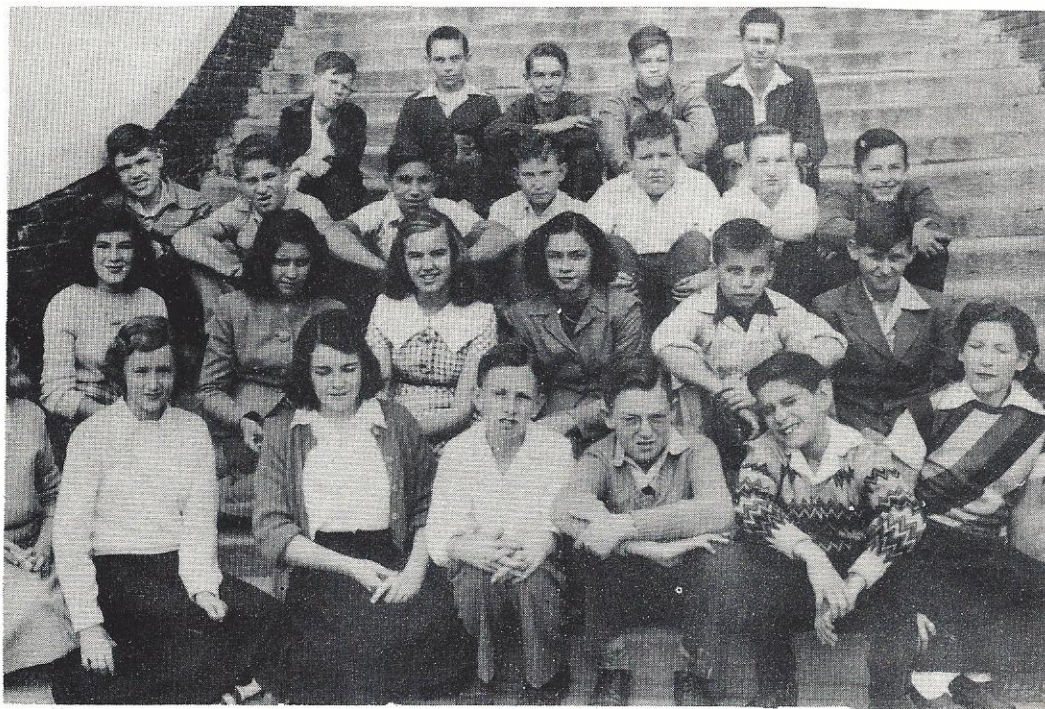


Section B



Section C

# CLASS OF



## Section A

President	Johnnie Burkett	Secretary	Freddie Holston
Vice President	Mary Koon	Treasurer	Griff Smith

Section A. Left to right, first row: Miriam Adams, Carolyn Courtney, Dorothy Burton, Shirley Bedenbaugh, Eldon Eargle, Carl Cook, Sue Elkin.

Second row: Mrs. Bethea, Dorothy Ann Amick, Venola Derrick, Norma Bush, Doris Bedenbaugh, Horace Atwell, Mike Fallaw.

Third row: Edward Bodie, Omar Eargle, J. W. Corley, Harold Durst, John Corder, Marvin Boatwright, Roy Bush.

Fourth row: La Vaun Fox, James Attaway, Kenneth Corley, Zimmerman Cockrell, Jimmy Bedenbaugh.

Not Shown: Johnnie Burkett.

Section B. Left to right, first row: B. R. Matthews, Denzil Hazel, Ronald Hall, Prevost Lorrick, Freddie Holston, Ruth Lewis, Sue Meetze.

Second row: Betty Jean Long, Lewis Mitchell, Mamie Sue Spurlock, Melverta Oswald, Ann Goff, David Metts.

Third row: Joyce Ann Merritt, Emily Lorick, Augustine Oswald, Connie Metts, Mary Koon, John Oswald.

Fourth row: Helen McCormick, Billy Lewis, Billy Lindler, Tommie Gaylord, Jimmy Long.

Fifth row: Miss Taylor, Raymond Hallman, Bobby Holcombe, Sam Maroney.

Not shown: Carlisle Gantt, Joseph Jones.

Section C. Left to right, first row: Ronald Prater, Jerry Whitman, Richard Prater, Norma Whitman, Frank Stevens, Grady Temple, David Watson, Donald Shealy.

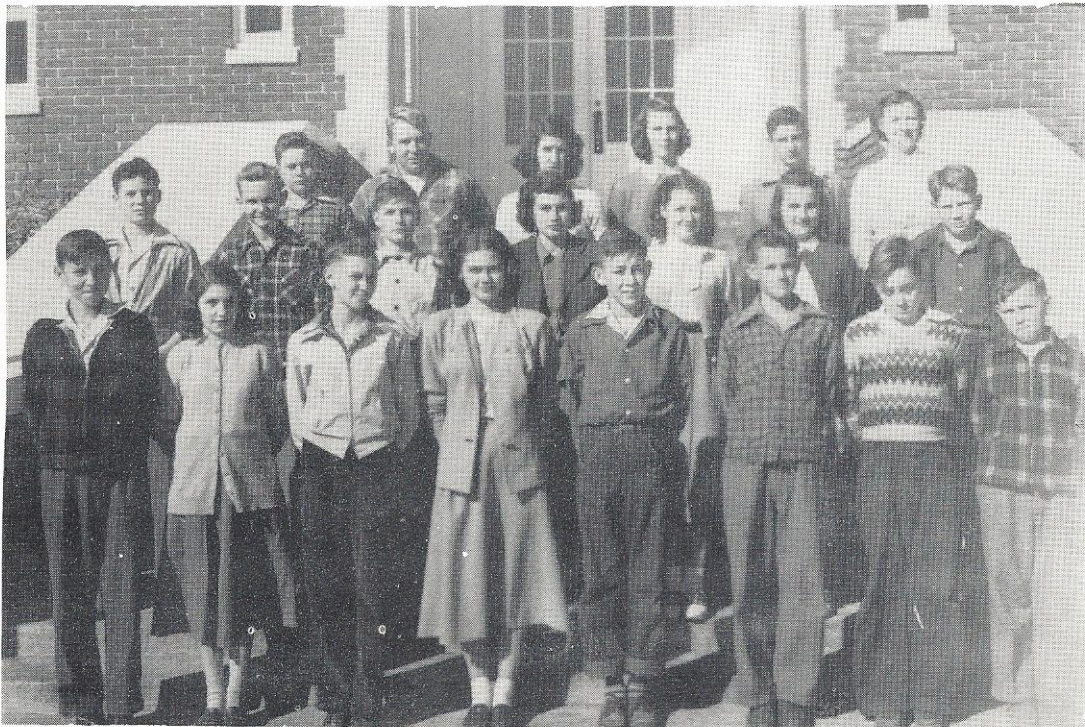
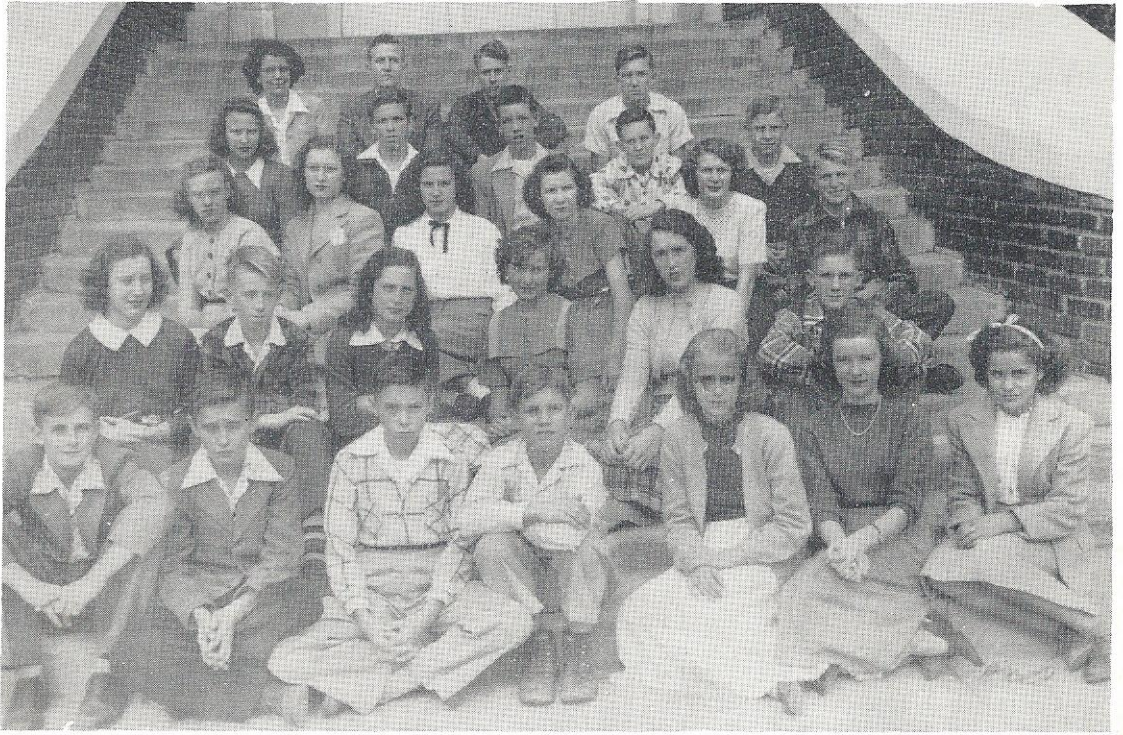
Second row: Bobby Enlow, Harry Dellinger, Melvin Smith, Edith Riley, Joyce Taylor, Mary Risinger, Deward Swygert.

Third row: Frontier Smith, Jonathan Fry, Joan Temples, Rebecca Shealy, Griff Smith, Miss Trotter.

Not shown: J. A. Sease, John Edward Trotter, Nancy Rikard, Eugene Troutman.

FIFTY-THREE

Section B



Section C

Mary Ringer  
Joy Taylor

# ATHLETICS



*Love up there  
Jean*

*So a  
cute  
girl  
"Goodly"*

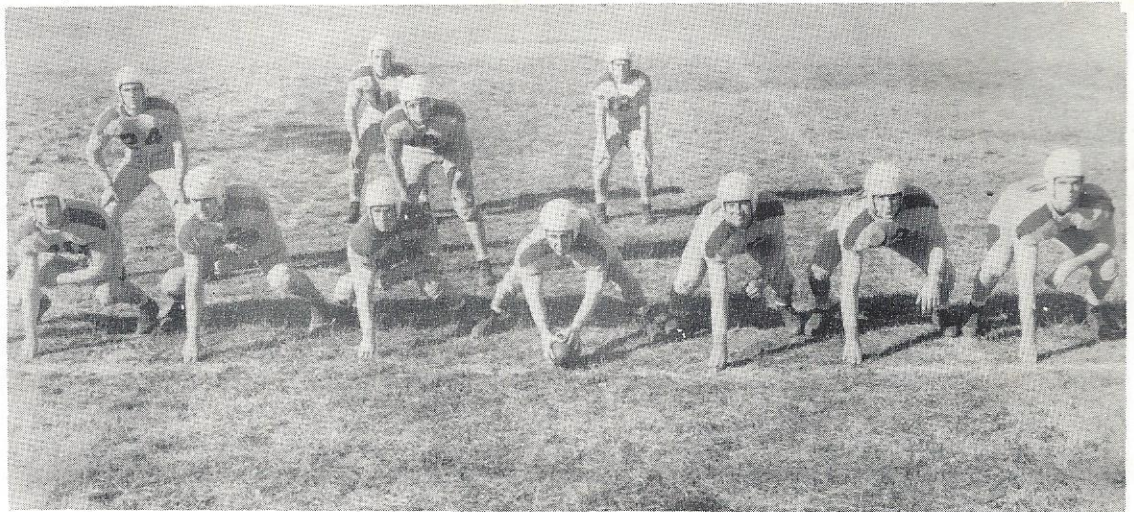
*So a  
very  
nice  
girl  
Kitty*

Left to right: Jean Rikard, Barbara Nichols, Carol Ann Flowers, Janet Rives, Catherine Williams, Virginia Campbell.

HUSKIES

OF THE

GRIDIRON



### The Lineup

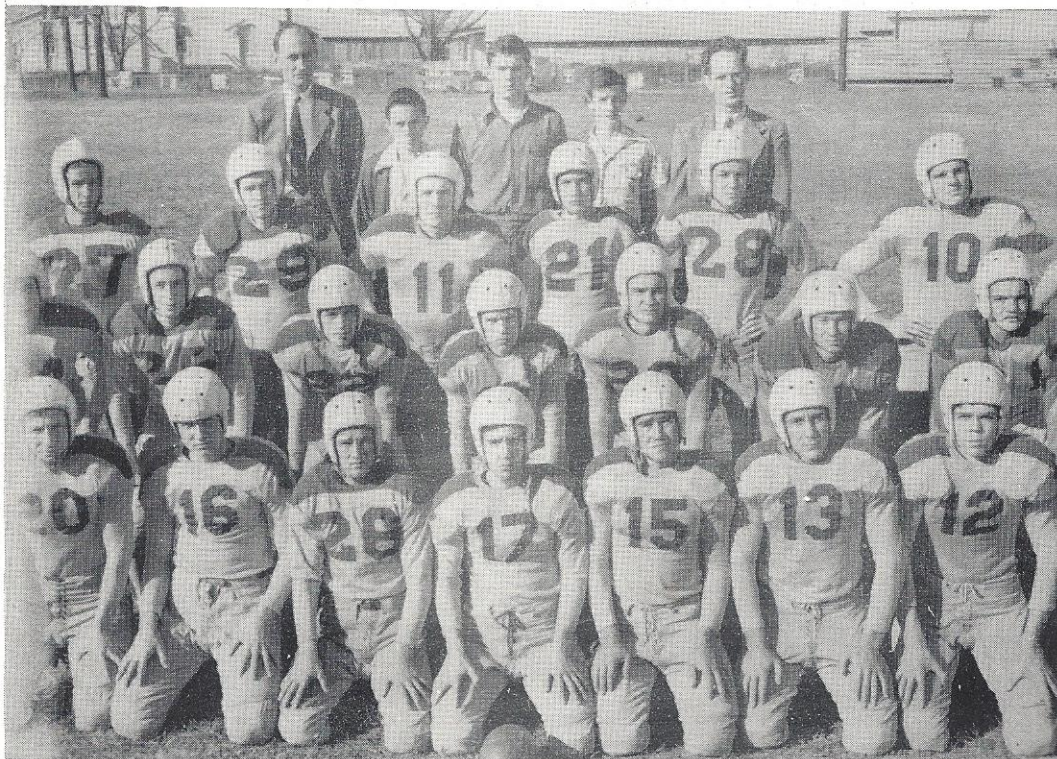
Left to right: Jimmie Rikard, David Rawl, Marion Lewis, Hamilton Kyzer, James Riley, Ralph Smith, Richard Campbell, Carl Boozer, Roy Burkett and Jimmy Simons ( Co-Captain ).

Left to right, first row: Jimmy Rikard, David Rawl, Marion Lewis, Hamilton Kyzer, James Riley, Ralph Smith, Richard Campbell.

Second row: Carl Boozer, Connley Lybrand, Billy Horne, Jimmy Simons, Charles Grandy, Vernon McCullough, Franklin Robertson.

Third row: Bobby Lewis, Charles Duncan, Ray Burkett, Carl Rogers, Sammy Parler, Roy Burkett.

Fourth row: Ass't Coach Timmerman, James Attaway, Harold Attaway, Griff Smith, and Coach Gilbreath.



Coaches:

Mr. Gilbreath  
Mr. Timmerman

Managers:

James Attaway  
Harold Attaway  
Griff Smith

# HEROINES OF THE BASKET



*Betty Keisler*

Captain: Barbara Nichols  
 Coach: Mr. Timmerman

Left to right, first row: Virginia Campbell, Julienne Oxner, Jackie Smith, Barbara Nichols, Peggy Holston, Betty Keisler, Ann Wilson.

Second row: Patty Lindler, Mary Carole Taylor, Marilyn Spilliards, Robin Brabham, Carole Ann Flowers, Jean Rikard, Betsy Shealy, Mary Dickert.

Third row: Coach Timmerman, Miriam Shealy, Jane Davis, Carole Aull, Janet Rives, Jeanette Gantt, Helen Ann Drafts, Elizabeth Campbell, Melba Taylor, and Gail Hendrix.

*"Foster" Dickert*

*Best Luck  
 to a Wonderful Basketball  
 girl. Love Robin*

*Robin*

*Thank you for  
 having me on the team.  
 Love Robin*

## Heroes of the Basket



*Richard Campbell*

Left to right, First row: W. L. Jones, Herman Lewis, Richard Campbell, Jimmy Simons, Roy Burkett.

Second row: Charles Grandy, Robert Henry, Marion Shealy, Arthur Wilson, Billy Horne.

Third row: Marion Lewis, Carl Boozer, Bobby Bouknight, Sammy Parler, Mr. Gilbreath.

Coach:  
Captain:

Mr. Gilbreath  
Richard Campbell

## CLASS A CHAMPS



Left to right, first row: Delmas Lybrand, Bobby Lewis, Connley Lybrand, Carl Rogers, Arthur Wilson, Ted Oxner, Pickens Riser, Armand Hare, Herman Lewis, Jimmy Simons, Bobby Bouknight, Carl Boozer.

Second row: Mr. Gilbreath, Robert Henry, Hollie Egle, Bill Strange, Jimmy Hart, Sammy Parler, Franklin Robertson, Hamilton Kyzer, Ray Burkett, James Attaway, Harold Attaway, Mr. Timmerman.

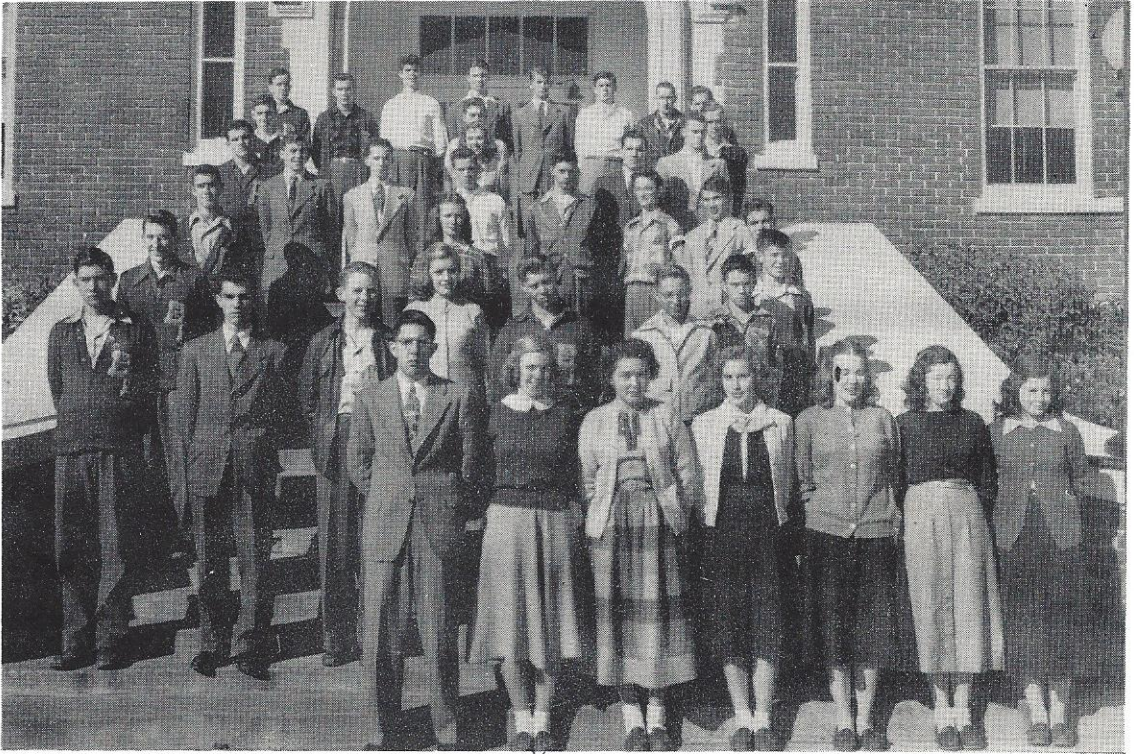
Not shown in picture: Fred Derrick - Captain.

Coach: Mr. Gilbreath  
Assistant Coach: Mr. Timmerman

Managers: Harold Attaway, James Attaway, Hollie Egle.  
Bookkeeper: Robert Henry



## Letter Bearers



Harold Attaway, James Attaway, Carl Boozer, Bobby Bouknight, Robin Brabham, Ray Burkett, Roy Burkett, Richard Campbell, Virginia Campbell, Carroll Cockrell, Carole Ann Flowers, Armand Hare, Jimmy Hart, Peggy Holston, Robert Henry, Billy Horne, W. L. Jones, Betty Keisler, Hamilton Kyzer, Bobby Lewis, Herman Lewis, Connley Lybrand, Barbara Nichols, Julianne Oxner, Ted Oxner, Sammy Parler, Jean Rikard, Jimmie Rikard, James Riley, Pickens Riser, Franklin Robertson, Carl Rogers, Betsy Shealy, Marion Shealy, Jackie Smith, Ralph Smith, Arthur Wilson, Mr. Timmerman, and Mr. Gilbreath.

President	Ray Burkett
Vice President	Hamilton Kyzer
Secretary-Treasurer	<u>Barbara Nichols</u>

Sponsors: Mr. Gilbreath, Mr. Timmerman

## Organizations



### OUR STAFF

Mrs. Hite, Sponsor; Frances Williams, Ass't; Martha Bagwell, Ass't; Carolyn Herlong, Ass't Editor; Bobby Bouknight, Ass't; Barbara Ann Langford, Editor; Betty Lou Fallaw, Ass't; Sara Ergle, Ass't; Miss Taylor, Sponsor.

Not shown: Pearle Kneece, Business Manager

## LIBRARY COUNCIL



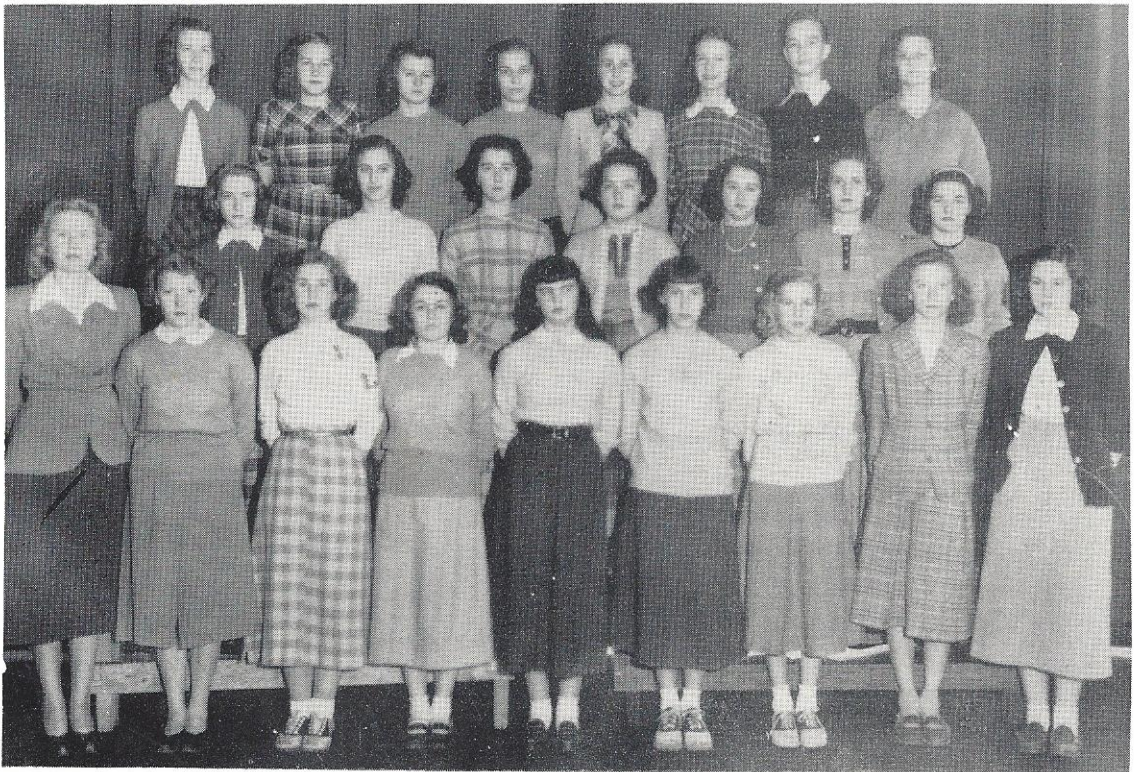
Sara Amick, Joyce Anderson, Carole Aull, Martha Bagwell, Shirley Bedenbaugh, Robin Brabham, Wilma Burkett, Helen Drafts, Jeanette Gantt, Denzil Hazel, Sara Joyce Hite, Josephine Hoover, Sue Meetze, Ray Smith, Annette Snelgrove.

President:	Wilma Burkett
Vice President:	Ray Smith
Secretary:	Martha Bagwell
Treasurer:	Jeanette Gantt
Publicity Chairman:	Carole Aull
Sponsor:	Miss Ritter

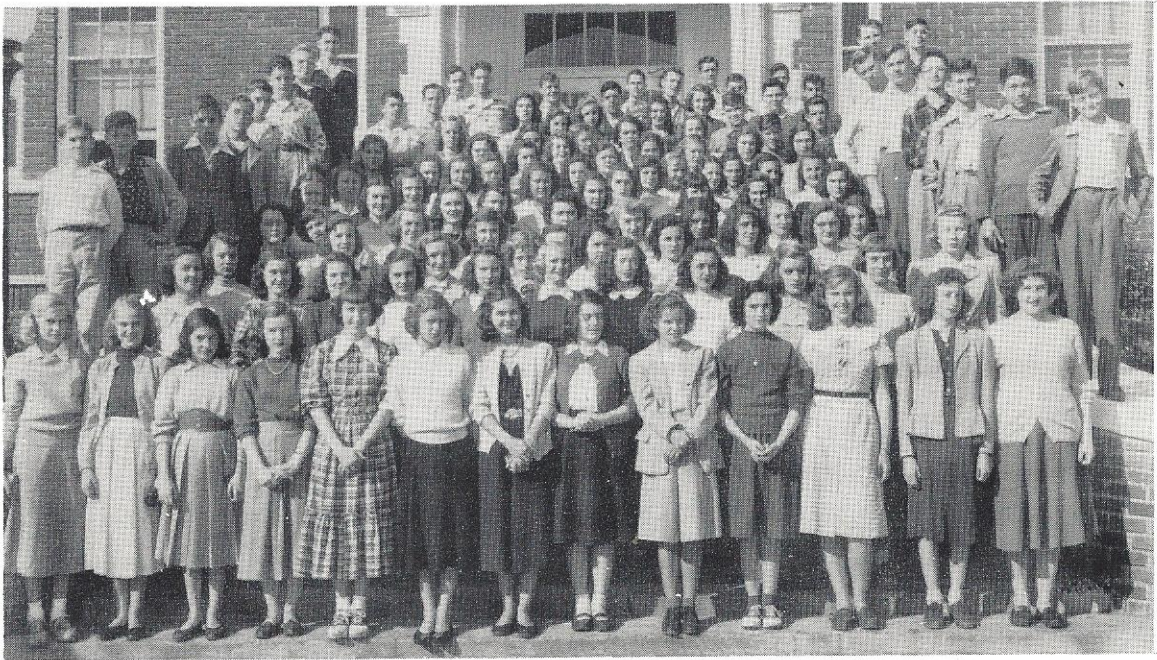
HARMONY AT ITS BEST



PIANISTS OF TOMORROW



-----AND THEIR VOICES BLENDED



**SOPRANOS:** Miriam Adams\*\*, Katherine Alexander\*, Dorothy Ann Amick, Joyce Anderson, Josephine Aull\*, Betty Bedenbaugh, Grace Berry\*\*, Betty Bouknight\*, Robin Brabham, Betty Ruth Bradshaw\*, Dorothy Burton\*\*, Elizabeth Campbell\*, Gladys Canada\*, Ruth Caughman, Carolyn Courtney, Venola Derrick, Sue Elkin, Carol Ann Flowers\*\*, Jeanette Gantt\*, Barbara Harmon, Zelma Hartley\*\*, Gail Hendrix\*\*, Sara Hite\*\*, Freddie Holston\*, Sara Kelly\*\*, Mary Koon, Barbara Ann Langford\*, Ruth Lewis\*, Emily Jean Lorick, Helen McCormick\*, Connie Meets, Sue Meetze, Joyce Ann Merritt, Barbara Nichols\*, Melverta Oswald, Mildred Oxner\*, Martha Price, Nancy Rikard\*\*, Mary Risinger, Rachel Shaw, Adrienne Shealy, Dorothy Ann Shealy, Helen Shealy, Joyce Shealy, Rebecca Shealy\*\*, Sara Ann Shealy\*, Wilma Raye Shealy, Frieda Ann Shealy, Annette Snelgrove, Joyce Taylor, Mary Carol Taylor\*\*, Jeannette Temples\*\*, Annie Mae Trotter\*\*, Jerry Whitman, Norma Whitman, Peggy Whitman\*.

**ALTOS:** Carole Aull, Martha Bagwell, Norma Bush, Christine Cockrell, Ila Ann Cook, Jane Davis, Margie Dellinger\*\*, Helen Ann Drafts\*\*, Betty Lou Fallaw, Bette Fulmer\*, Ann Goff\*, Peggy Holston\*, Betty Jones\*\*, Joan Keisler\*\*, Patty Linkler, Betty Jean Long\*, Augustine Oswald\*, Julienne Oxner\*, Jean Rikard\*\*, Janet Rives\*, Betsy Shealy\*, Dorothy E. Shealy, Miriam Shealy\*\*, Shirley Shealy, Betty Smith\*, Jackie Smith, Melba Taylor, Thelma Watkins\*, Ann Wilson\*\*.

**TENORS:** Wyman Banks, Edward Bodie, Ronald Carter\*, Zimmerman Cockrell, Thomas Gaylord, Wayne Goff, Ronald Hall, Denzil Hazel, Robert Henry, Shaw Langford, Herman Lewis, Prevost Lorick, Prescott May\*, B. R. Matthews, S. J. Shealy, Bill Strange\*.

**BASS:** Paul Amick\*, Tommy Are\*, Bobby Bouknight, Richard Campbell, Carrol Goff\*, Raymond Hallman, Jimmy Hart\*, Thomas Johnson\*, Hamilton Kyzer, Marion Lewis\*, D. C. Rhoden, John Wendell Shealy\*, Marion Shealy\*.

Piano Student \*\*  
Glee Club \*  
Both \*\*\*

## HOMEMAKERS



Julienne Oxner:	President
Pearle Kneece:	Vice President
Sara Amick:	Secretary
Wilma Burkett:	Treasurer
Miss Trotter:	Sponsor

Left to right, first row: Lilla Lee Stevens, Grace Berry, Evelyn Seigler, Gladys Norris, Jeanette Temples, Betty Lou Fallaw, Ann Quattlebaum, Dorothy Risinger.

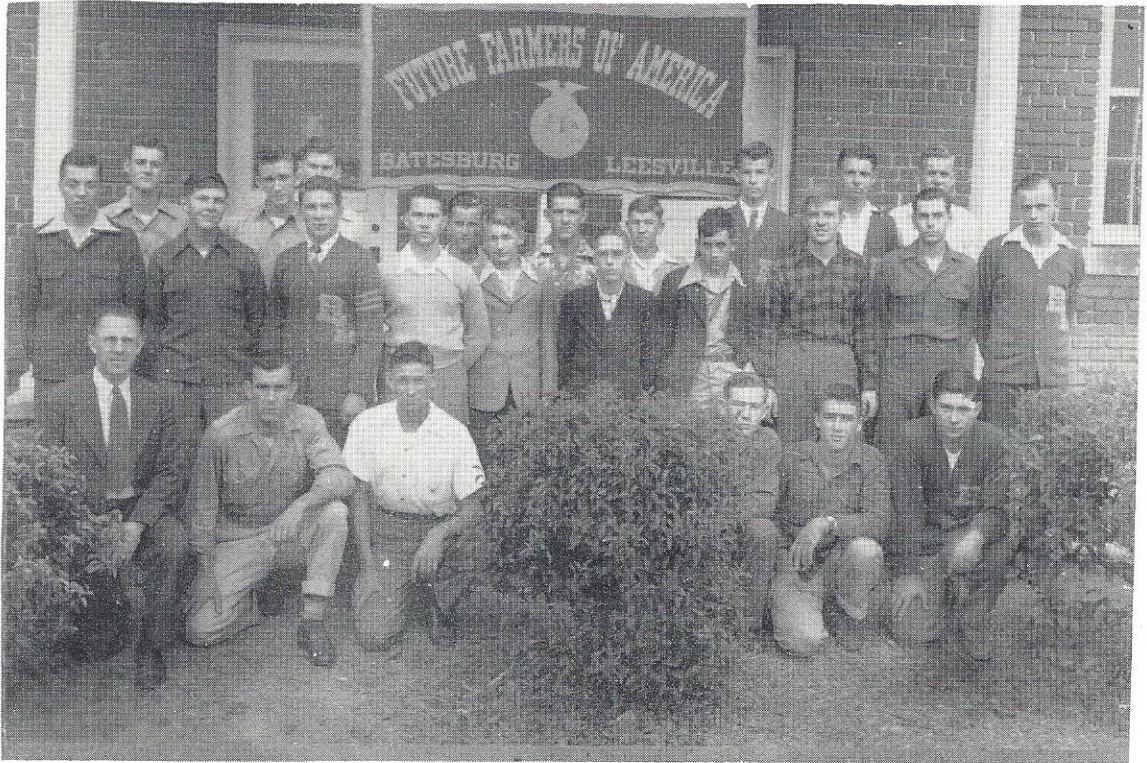
Second row: Miss Trotter, Mildred Oxner, Christine Cockrell, Mavis Padgett, Frances Williams, Doris Cockrell, Frances Hall.

Third row: Julienne Oxner, Wilma Burkette, Sally Warren, Thelma Watkins, Kathleen Senn, Doris Seigler.

Fourth row: Martha Price, Louise Eargle, Sara Amick, Doris Whitesides, Nelda Derrick, Pansy Gantt, Jaxqueline Smith.

Not shown: Pearle Kneece, Eleanor Hare, Shirley Love.

## OUR FUTURE FARMERS



Front row, left to right: Mr. Ansel Murphy, Ralph Smith, Robert Roberson, Vernon McCullough, James Riley, and Carl Rogers.

Second row: Keith Bedenbaugh, Doyle Goff, Carl Boozer, Charlie Hite, David Boozer, Frank Keisler, John Warren, Don Padgett, Dan Warner, and Armand Hare.

Third row: John Wendell Shealy, Robert Addy, Edward Shealy, Charles McGee, Marion Lewis, Bland Hartley, Bobby Lewis, Pickens Riser, and J. P. Temples.

Not shown: Roy Burkett.

### Officers

President	Doyle Goff
Vice President	Don Padgett
Secretary	Marion Lewis
Treasurer	John W. Shealy
Reporter	Bobby Lewis
Watch Dog	Robert Addy
Adviser	Mr. Ansel Murphy

## THE HONOR STUDENTS



President	Barbara Ann Langford
Vice President	Kathleen Shealy
Secretary	<u>Barbara Nichols</u>
Reporter	Carolyn Herlong
Adviser	Mrs. J. T. Hite, Jr.

Left to right, seated: Kathleen Shealy, Vienna Smith, Jeanette Holston, Robin Brabham, Nelda Derrick, Barbara Ann Langford, Barbara Nichols, Carolyn Herlong, Helen Shealy, Gloria Copland, Mary Jo Hoover, Betty Keisler.

Second row, standing: Pearle Kneece, Virginia Campbell, Mrs. Hite, Miriam Weathers, Edna Norris, Christine Cockrell, Evelyn Seigler, Julienne Oxner, Sara Kelly, Hazel Perdue, Ila Ann Cook, John Wilmot Parler, Arthur Wilson, Bobby Bouknight, Henry W. Vansant, Bennie Storey.

Not shown: Sara Egle.



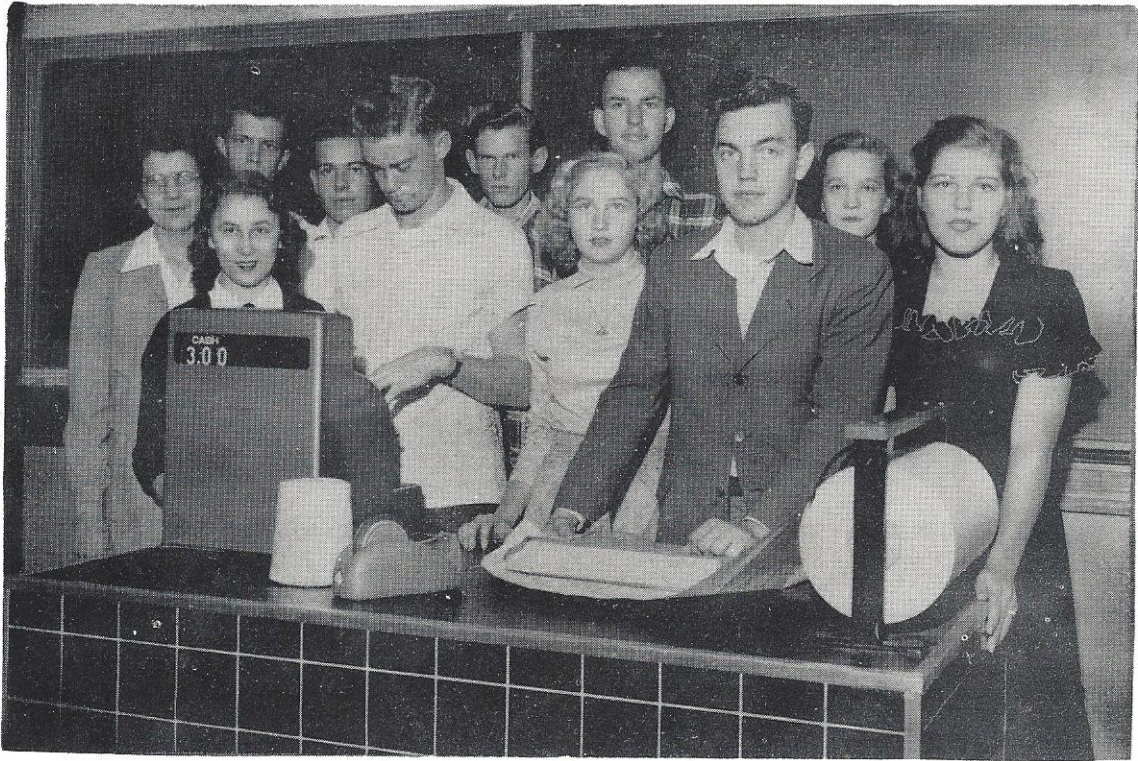
## NEWSMONGERS



Betty Lou Fallaw, Editor; Carolyn Herlong, Assistant Editor; Barbara Nichols, Business Manager; Martha Bagwell, Carole Aull, Art Editors; Ila Ann Cook, Circulation Manager; John Wilmot Parler, Virginia Campbell, Sports Editors; Jane Davis, Joke Editor; Barbara Ann Langford, Society Editor; Pearle Kneece, Exchange Editor; Betsy Shealy, Publicity Agent; Katherine Alexander, Betty Bouknight, Elizabeth Campbell, Ronald Carter, Mary Dickert, Carol Ann Flowers, Phoebe Herlong, Peggy Holston, Mary Jo Hoover, George Huggins, Joan Keisler, Betty Jean Long, D. C. Rhoden, Jean Rikard, Helen Shealy, Kathleen Shealy, Miriam Shealy, Ray Smith, Vienna Smith, Mary Carol Taylor, Melba Taylor, Thelma Watkins, Frances Williams, Ann Wilson.

Sponsor-----Miss Taylor

## TOMORROW'S RETAILERS



Distributive Education Members

President:	Pearle Kneece
Vice President:	Betty Jean Hite
Secretary-Treasurer:	Wendell Bedenbaugh
Reporter:	Marilyn Spilliards
Sponsor:	Miss Taylor

Left to right, first row: Betty Jean Hite, Carroll Cockrell, Marilyn Spilliards, Wendell Bedenbaugh, Thelma Watkins.

Second row: Miss Taylor, Thomas Johnson, Carrol Goff, Dowie Mabus, Charles Duncan, Sara Ann Shealy.



A Busy man was he



Our Trophies



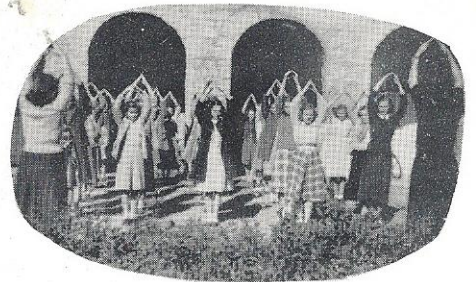
The Fairy Queen



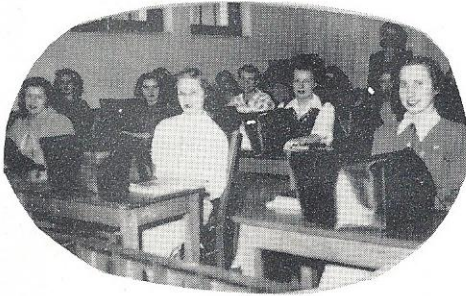
Doing the job



Attentive Faces



Oh, that exercise



For future business



That good old candy



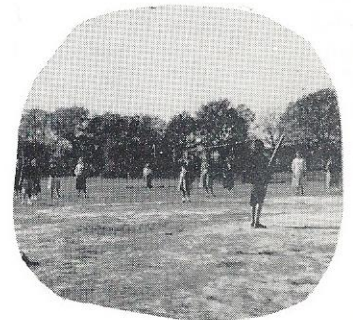
Young Scientists



Exercise again



Stopped by the Bell.



Batter up



"We'll both go"



Here comes Charlie



"Oh, Papa Larry"



Always prepared



Educate for Freedom



Mr. Johnson



Our favorite pastime



The milk line



Our Cooks



"Holy, holy, holy"



At Ease



Where is he?



Swing your partner



Ha, Ha



Sold



Listening



Gee, the Bell



This way



What?



Gossip



Ray



Let's go Home



Like this



A Report



Success



Bye

# ADVERT- TISEMENTS



*Compliments of*

Rawls Auto Sales, Inc.

*Sales*  *Service*

THE FRIENDLY FORD DEALER

Batesburg - Leesville, S. C.

*Compliments of*

# DELLINGER'S HATCHERY

CHESTERFIELD FEEDS

Batesburg, S. C.

---

# RIDGE MOTOR CO.

DESOTO - PLYMOUTH

Batesburg, S. C.

---

*Compliments of*

# Batesburg Fertilizer Company

Manufacturers High Grade Fertilizer, Cottons, Cotton Gin  
Cotton Seed, Cotton Seed Products, Coal

Phone No. 5

Batesburg, S. C.

---

*Compliments of*

# Ridge Green House

Leesville, S. C.



# Twin City Poultry Company

*"LIVE AND DRESSED POULTRY"*

Leesville, S. C.

H. T. Fallaw

Phone 2661

# Shealy Furniture Company

*Furniture and Home Furnishings*

General Electric Home Appliances, Radios, Beauty Rest  
Mattresses and Springs, Venetian Blinds, Shades, Car-  
pets, Carolina Parlor and Living Room Furniture

Phone 88

Batesburg, S. C.

O. E. Hartley

F. C. Bordeaux

# Batesburg Building Supply Company

*"If It's for Building, We Have It"*

Batesburg, S. C.

# OUR SUPER MARKET

*Most Quantity of Quality  
For the Price*

Leesville, S. C.

Phone 3181

*Compliments of*

Textron Southern, Inc.

Batesburg, S. C.

Todd Sporting Goods Co.

*Wholesale and Retail*

9375 Main Street

Columbia, S. C.

*Compliments of*

Twin City Dairy

*Grade A Raw and Pasteurized Milk*

Batesburg-Leesville, S. C.

W. W. Thompson Company

*Compliments of*

# Green "T" Service Station

Batesburg, S. C.

## Carolina Dairies

Phone 20043

Broad River Road

Columbia

*"Quality Dairy Products"*

*Compliments of*

# IMPERIAL CASKET COMPANY

# Twin City Motor Company



Authorized Chevrolet Sales and Service

Batesburg, S. C.

Phone 124

---

# The Epting Distributing Company

MANUFACTURERS OF

Fertilizers - Agricultural Chemicals

Dealers In and Processors Of

FINE FARM SEEDS

Distributors in South Carolina of Tennessee Basic Slag

Leesville, S. C.

Every Day is a Holiday for Your Clothes at  
Holiday Cleaners & Laundry

QUALITY

Cleaning

Laundry

Dyeing

Leesville, S. C.  
Phone 2782

Johnston, S. C.  
Phone 425

*COMPLIMENTS OF*

HOME SUPPLY COMPANY

Phone 70-J

Batesburg, S. C.

*COMPLIMENTS OF*

Shell Service Station

F. H. Hendrix, Jr.

Phone 2731

Leesville, S. C.

*COMPLIMENTS OF*



Columbia, S. C.

Five Points, S. C.

Batesburg, S. C.

<p style="text-align: center;"><i>Compliments of</i></p> <p style="text-align: center;"><b>Hunt Tire &amp; Electric Co.</b></p> <p>Philco <span style="float: right;">Bendix</span></p> <p style="text-align: center;">Batesburg, S. C.</p>	<p style="text-align: center;"><i>Compliments of</i></p> <p style="text-align: center;"><b>Fulmer Hardware</b></p> <p style="text-align: center;">Batesburg, S. C. Phone 21-J</p>
<p style="text-align: center;"><i>Best Wishes</i></p> <p style="text-align: center;"><b>Antopolsky Hardware</b></p> <p style="text-align: center;">Batesburg, S. C.</p>	<p style="text-align: center;"><i>Compliments of</i></p> <p style="text-align: center;"><b>The Bruner Press</b></p> <p>Printers <span style="float: right;">Publishers</span></p> <p style="text-align: center;">Batesburg-Leesville, S. C.</p>
<p style="text-align: center;"><i>Compliments of</i></p> <p style="text-align: center;"><b>Henry's Pharmacy</b></p> <p>R. F. Henry, Ph. G. Licensed Druggist</p> <p style="text-align: center;">Leesville, S. C.</p>	<p style="text-align: center;"><i>Compliments of</i></p> <p style="text-align: center;"><b>Fair Drug Company</b></p> <p style="text-align: center;">Reliable Druggists</p> <p style="text-align: center;">Three Registered Pharmacists On Duty at All Times</p> <p>Phone 116 <span style="float: right;">Batesburg, S. C.</span></p>
<p style="text-align: center;"><i>Compliments of</i></p> <p style="text-align: center;"><b>GARBER'S, INC.</b></p> <p style="text-align: center;"><i>"Everything to Wear"</i></p> <p style="text-align: center;">Batesburg, S. C.</p>	<p style="text-align: center;"><i>Compliments of</i></p> <p style="text-align: center;"><b>Leesville Flour Mill Co.</b></p> <p style="text-align: center;"><i>"Our Success is Measured By Satisfied Customers"</i></p> <p style="text-align: center;">Leesville, S. C.</p>

*Compliments of*

**Tri-County Refrigeration  
Company, Inc.**

Leesville, S. C.

*Compliments of*

**Taylor Grocery & Supply**

W. K. Taylor, Proprietor

Phone 2777

Leesville, S. C.

*Compliments of*

**Sherer's Sport Shop**

Complete line of Sporting Goods  
and Sportswear

Rock Hill, South Carolina

*Compliments of*

**LEWIS GARAGE**

Engine Rebuilding      Crankshaft  
Regrinding

Complete Radiator and Chasis  
Service

Body and Fender Work

Highway No. 23

Phone 190

Batesburg, S. C.

**W. Fred Hendrix**

*"Famous for Fine Foods"*

Groceries, Fresh Meats, & Produce

Phone 2711

Leesville, S. C.

**Crutchfield's, Inc.**

*"Your Specialists in Sports"*

Largest Stock in South Carolina

Parcel Post Mailed Every  
Half Hour

For your convenience when  
visiting us

*Sample Room, Soft Drink Bar and  
Driving Range*

Crutchfield's, Inc.

*"Among the South's Finest"*

Complete Athletic Outfitters

*Compliments of*

**Pearce-Young-Angel  
Company, Inc.**

Wholesale Foods

Fresh — Canned — Dried

Columbia, S. C.

*Compliments of*

**Naco Farm Supply Store**

Batesburg, S. C.

**Hylar & Wasson**

New and Used Cars

Batesburg, S. C.

*Compliments of*

**JOE WATSON**  
**Texas Oil Company**

Leesville, S. C.

What You Want As You Want It  
... in ...

Furniture, Electrical Appliances,  
Clothing, at

**Economy Furniture Co.**

Leesville, S. C.

The Most of the Best For  
The Least in  
Dry Goods, Notions, Hardware  
at

**Long's 10c & Variety  
Store**

Leesville, S. C.

**Leesville Home & Auto  
Supply**

Tires    Batteries  
Electrical Appliances

Leesville, S. C.

*Compliments of*

**Bouknight Pontiac Co.**

Sales and Service

Batesburg, S. C.

*Compliments of*

**The City Market**

Hoyt Taylor, Proprietor

Leesville, S. C.

*Compliments of*

**Friendly Twin City  
Coaches**

*"The Friend of School Children"*

Jim Jeffers, Owner

*Compliments of*

**THE BEACON**

Leroy Burkett, Proprietor



<p><i>Compliments of</i></p> <p><b>Supreme Ice Cream Co. and Batesburg Ice Co.</b></p>	<p><i>Compliments of</i></p> <p><b>Electric Service Co.</b> Hotpoint Appliances Dan Miller Batesburg, S. C.</p>
<p><i>Compliments of</i></p> <p><b>J. P. ADDY CO.</b></p> <p>Batesburg, S. C.</p>	<p><i>Compliments of</i></p> <p><b>S. G. Parler &amp; Son</b> Wholesale Grocery Batesburg, S. C.</p>
<p><i>Compliments of</i></p> <p><b>Bouknight's Sales and Service</b> Kaiser - Frazier Dealer in New and Used Cars See Us First Batesburg, S. C.</p>	<p><i>Compliments of</i></p> <p><b>T. R. Aull's Shell Service Station and Grocery</b> 12 Miles North of Batesburg 391 Highway                      Phone 2621</p>
<p><i>Compliments of</i></p> <p><b>Harold Aull's Texaco Service Station &amp; Grocery</b> 11 Miles North of Batesburg Traffic Circle</p>	<p><i>Compliments of</i></p> <p><b>Colonial Baking Co.</b> Augusta, Ga.</p>

<p><i>Compliments of</i></p> <p><b>Batesburg Hardware Co.</b></p> <p>Batesburg, S. C.</p>	<p><i>Compliments of</i></p> <p><b>McCartha Hardware Co.</b></p> <p>Hardware and Gifts</p> <p>Leesville, S. C.</p>
<p><i>Compliments of</i></p> <p><b>C. D. BARR'S STORE</b></p> <p>Leesville, S. C.</p>	<p><i>Compliments of</i></p> <p><b>Leesville Service Station</b></p> <p>C. L. Rikard</p> <p>Sinclair Products</p> <p>Leesville, S. C.</p>
<p><i>Compliments of</i></p> <p><b>Crout's Service Station</b></p> <p>Leesville, S. C.</p>	<p><i>Compliments of</i></p> <p><b>Jack's Cash Feed &amp; Seed</b></p> <p>Poultry Supplies      Baby Chicks</p> <p>Leesville, S. C.</p> <p>Phone 2346</p>
<p><i>Compliments of</i></p> <p><b>Wilbur Shealy's Service Station</b></p> <p>Shell Products</p> <p>Leesville, S. C.</p>	<p><i>Compliments of</i></p> <p><b>SAM E. OWEN</b></p> <p>Gulf Products</p>

*COMPLIMENTS OF*

E. S. Copeland Manufacturing Co.

Batesburg, South Carolina

The Leesville Oil Mill Company

Leesville, S. C.

Known for All Products of Cotton Seed--Meal, Hulls  
Linters and Oil

ALSO THE BEST IN COAL

When in Need of Any of These, Come and See Us

*COMPLIMENTS OF*

Royal Crown Bottling Co.

1211 Assembly Street  
Columbia, S. C.

*COMPLIMENTS OF*

The New Cafe  
Batesburg, S. C.

Belk-White Company  
Batesburg, S. G.

J. B. Ballentine  
Batesburg, S. C.

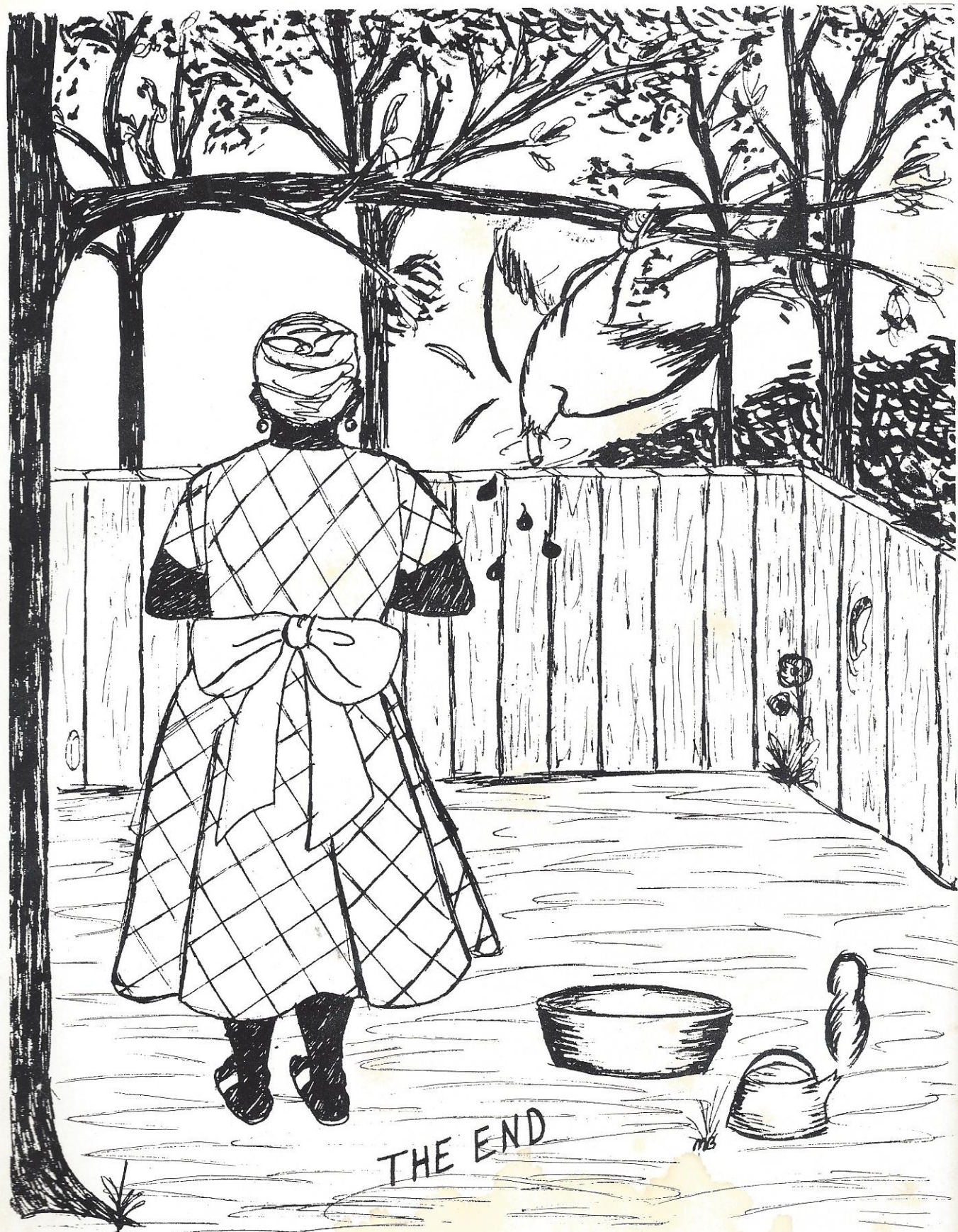
Fashion Shop  
Batesburg, S. C.

Risinger's Market  
Leesville, S. C.

Mr. C. L. Shealy  
Germany Roy Brown,  
Inc.

Lona Etheredge  
Batesburg, S. C.

W. H. Chiles  
Josten's



THE END







