

Food

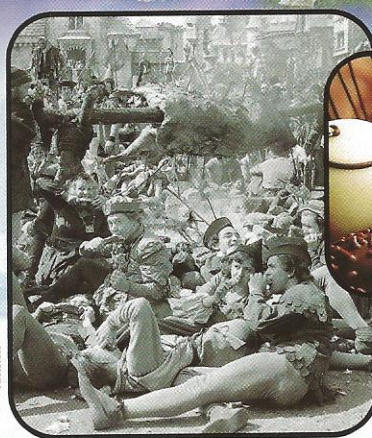
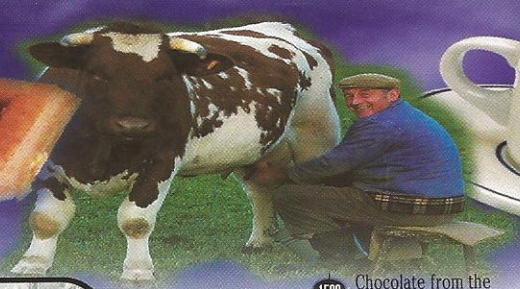
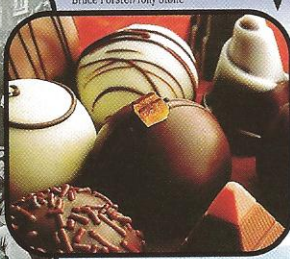


Photo: [unreadable]



Bruce Forster/Tony Stone

1520 Chocolate from the New World takes Europe by storm. Brought to Spain from Mexico, chocolate is so costly that Europeans water it down for use as a drink. Natives of Mexico have prized chocolate since ancient times.

1762 John Montagu, 4th Earl of Sandwich, instructs his servants to bring him his meat between two pieces of bread. This way he can eat with one hand while continuing to play cards with the other. The term "sandwich" is born.



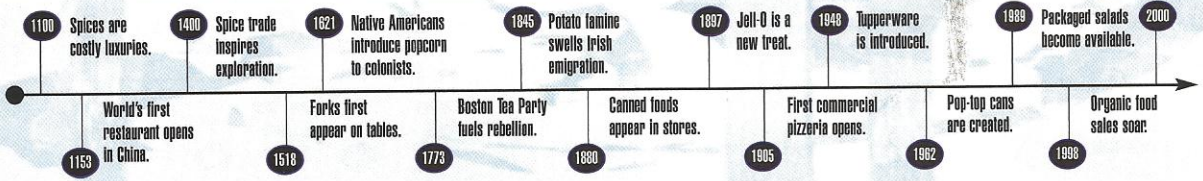
King Features Syndicate/North American Syndicate

1850 Europe's first coffeehouse opens in England. By 1700, there are 2,000 coffeehouses in London alone. Early coffeehouses are important places to transact business. Lloyd's Coffeehouse evolves into Lloyd's of London, the giant insurance brokerage.

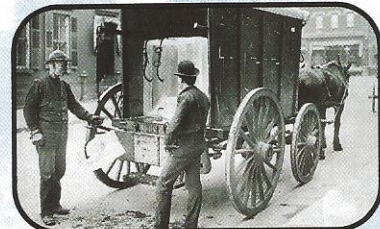


Calver Pictures

© 2000 Photodisc, Inc.



Brown Brothers



Mark Segal/Tony Stone

1840 Domestic ice chests provide early refrigeration. Blocks of ice are cut, delivered to homes and sold for use in kitchen ice chests. It is the early 1930s before reliable electric home refrigerators are in common use.



Everett Collection

1954 Swanson creates the TV dinner, sold in boxes designed to look like television sets. Frozen dinners are possible because of Clarence Birdseye's 1929 invention of early methods for freezing food.

1878 Alexander Campbell, Brooklyn, is the first to deliver milk in glass bottles. For many years the neighborhood milkman is the most common way to obtain fresh milk, before the age of supermarkets.



Lambert/Archive Photos

1932 America's first large self-service supermarket opens, followed by the invention of the grocery shopping cart in 1937. During the Depression, supermarkets become a significant part of the food distribution network.



Doris Barber/PhotoDisc

1996 Choices expand in school lunch programs. A growing number of public schools begin featuring national fast-food outlets and soft drink brands in the school lunchroom.

11000000