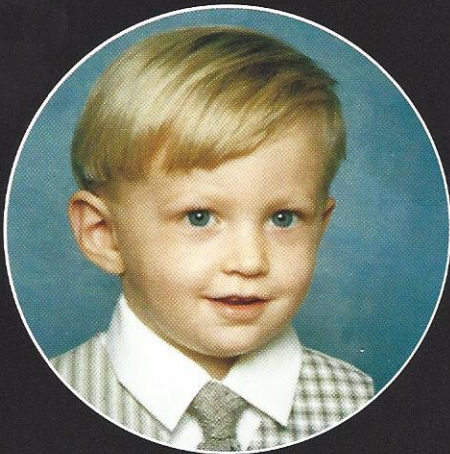
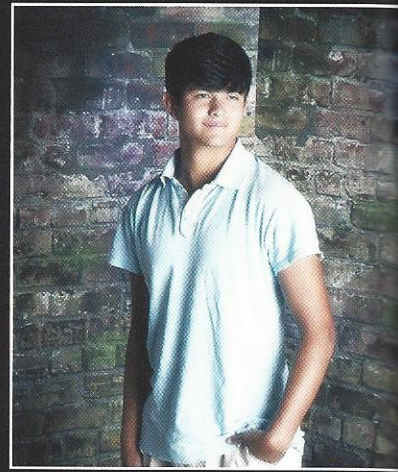




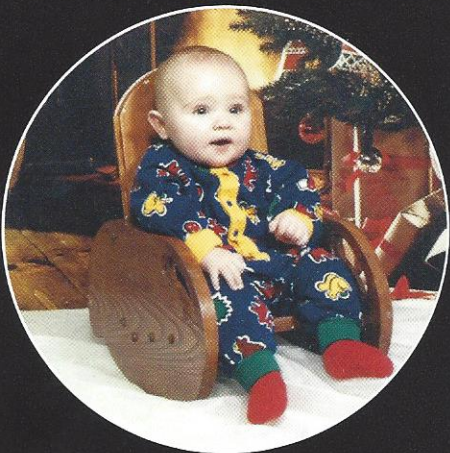
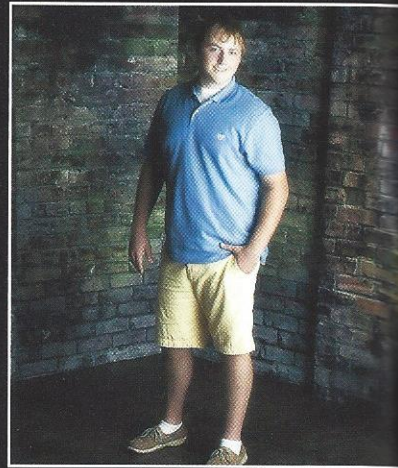
Will Reeves

"That ain't your house *run*" -GR, TS, AF;
Waking everyone up Spring Break 2012-MG,
TD; "We are gonna drag you to her"-DT, KJD,
MI; Family Guy quotes-LR, KN; "You're a
dime"- DT; "Let's Go!!"-DT, KJD; "Groomsy!"-
TS, MG, SB, TD, DT; "Who da're??"-MG;
"Alright meow" KN, MW



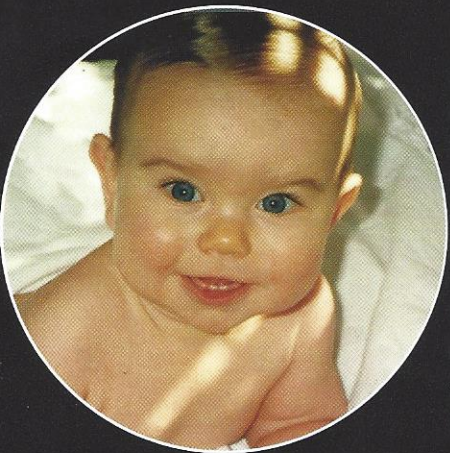
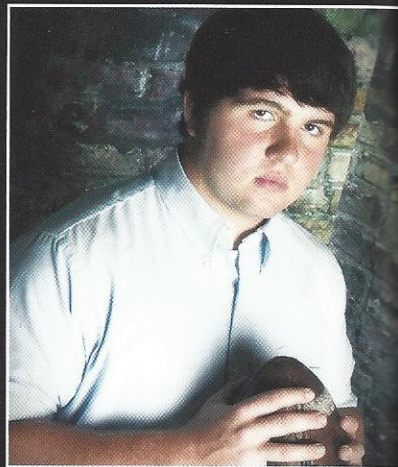
Gary Rhode

Why does your pin look like that? WR, CCHS;
Ben & Jerry's Ice Cream: AW, TS, DT; Keep it
3 hunna WR, TS; Jeep AW, TS, JC; Where's
Keith? KN, WR



Lee Riley

Access 34-MM, TML, LB; Caddy Shack-HF, CM, GR, MM;
There's something in my boot-MM, GR, CM, HF; DOJ!-BM,
HF, MM; Back of the bus-CM, MM, HF; Goon Squad!-TC, HF,
MM; Cheese nips/its-MM; The Janitor-WH; Almost died in
reverse-WC; WNL!!!-MM, WC, WM; New Years-the gang; 7-
DB, MM, CM, JR; pre-game-HF, TC, MR, LR; TRIAL-HF, MM,
TC; jumping tracks-JP, CP; duck hunting-WC, MM, TC, MM,
CM; Bike Race club-DB, MM, SS; Spring Break 2012-MM;
Where's my pants-MM, CM, CC, TB; Backcracking Buddy-TH;
GiGiMas-TC, HF, MM; Readheadedwaterwidgon-MM, WC;
TIRE-The crew; Moselle-HF, TC, SS, KD, TB, DB; Bad Luck
Brian-MM; No Fly Zone-MM, WC; Spring break 2013!-MM, TC,
HF, TB, DB, JG, SR, NO, WC, JP, CB, MR, LR, TML, TH;
Sign of a good morning-CM; Pool Float-MM; Vocab Letters-
KB, SP; BESTFRIEND-ANL; Buttscratcher-KN Princess-TK



Sean Spainhour

Spring Break 2012-OB, HS, BC, MH; Twister
Party!-KJ, CK, HS; Woah it's Hot!-MG, OB;
Ditches..-KD; FALCON!-RC, CM, OB; Whistling-
HS; Squatch Watch-MM, CM, HS, DB, LR, CB;
Alright One Time!-HS, KD; Toothbrush-MB; Love
Nest-MM; Chili Dog Thursday-CM, DB; That's My
Girlfriend-KD, HS; Have a Good Night-TB; Clap-
DB; Where's Kyle's Truck Going?-MM, DB, HF,
KD, TB, LR, TC; Little Giants-MG; Sonics-KD, HS
3 Best Friends-HS, KD; BAZINGA-HS
See you later CPA!

