

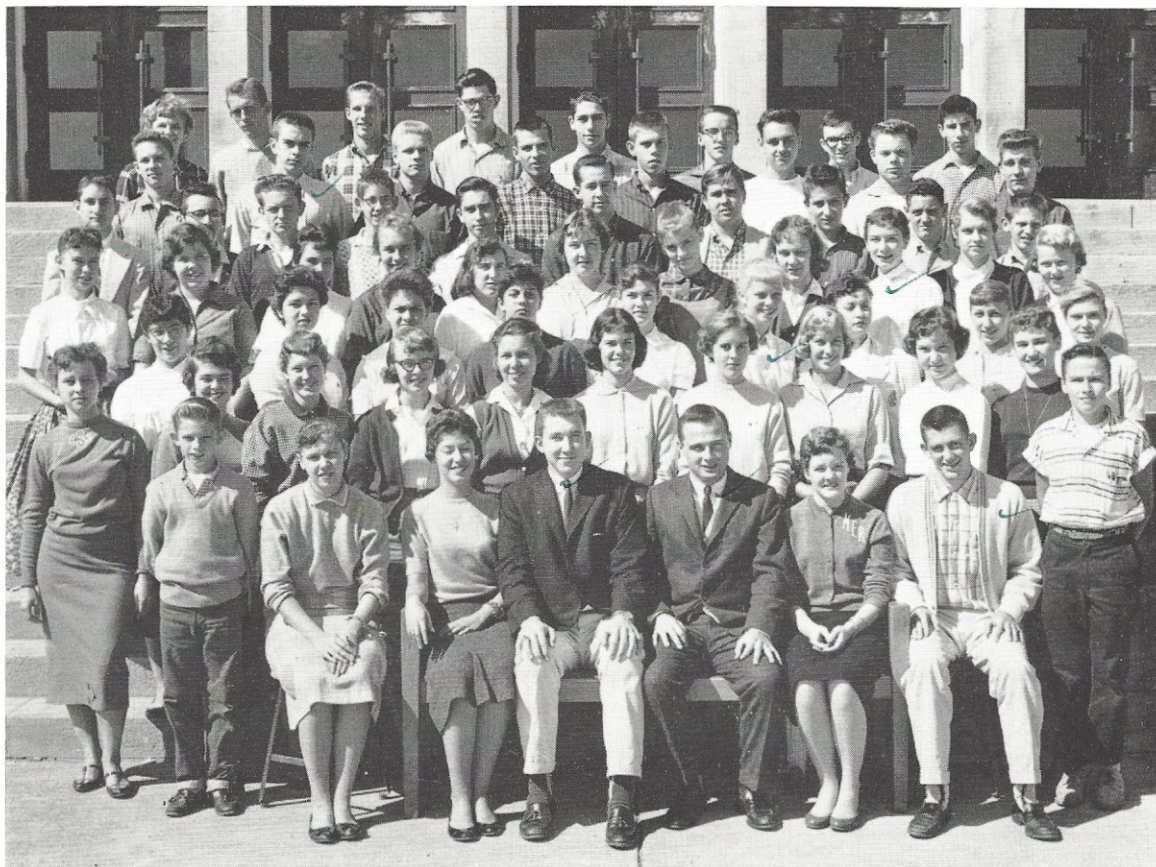
Sponsor: Miss Hachtman

with their coevals, co-operative with faculty and administration, loyal to the brink of chauvinism—in short, the student council is composed of the very finest people chosen from, and by, the finest secondary school population in the city. Modesty forbids our extending this self-evident claim geographically.



LAWRENCE MOCERI
Fall Vice-President

FALL ALTERNATES



Row One: K. Hastie, J. Kinsey, M. Spieldoch, R. Schwalter, L. Mocerri, M. Revelle, J. Hess, J. Brandle.
Row Two: C. Simmons, M. Milord, K. Gieck, V. Horack, S. Faulkner, C. Timpone, J. Selig, S. Evertz, F. Sarason, M. Clamors.
Row Three: G. Homan, L. Grasel, J. Gebel, S. Wells, J. Tennemann, K. Schuchardt, T. Lalumondiere, J. Ensor, C. Collins.
Row Four: G. Turner, M. Paglino, A. Makuh, J. Matula, P. Welsh, K. Heggen, J. Moore, S. Stoff, C. Brandt, C. Espy, M. McCain.
Row Five: B. Martin, G. Spelvin, D. Floyd, C. Dreher, R. Schworm, B. Bullock, B. Wagoner, J. Rupert, M. Rosa, J. Schaeffer.
Row Six: E. Hewlett, N. Lemme, D. Potter, H. Simmons, M. Moio, B. Deam, W. Beck, B. Seep.
Row Seven: Miss Hachtman, C. Robinson, F. Brinkop, G. Hoffmeister, H. Blase, E. Veach, T. Berkeley, F. Drovetti.