

A Capella Choir

Director: Miss Meyer

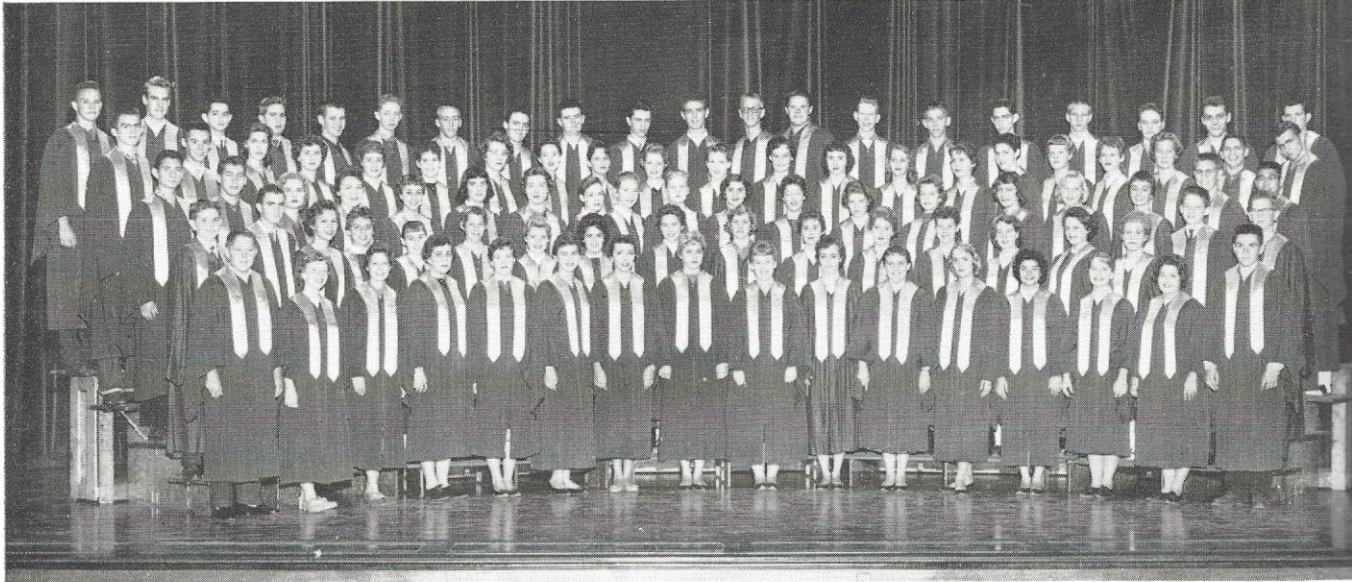
The choir is perhaps the most "looked-up-to" group at SW. This year, as in the past, they have brought us the solace and exultation of fine music through their program both here and outside the school. Most of the choir's success is due to the fact that they have one of the most capable and outstanding directors in the city, Miss Leontone Meyer.

Planning music parties and directing in Miss Meyer's absence kept Mike Wofford, the fall semester president, quite busy. The spring term marked a milestone in the choir's history. Elected was the first girl president, Lynn Wiesehan. In her term, she demonstrated her qualities as a capable leader and director.

"Once in the highlands, the highlands of Scotland" . . . these were the familiar strains echoing from 400 every morning during the fall as the choir prepared for the annual operetta. *Brigadoon* was Miss Meyer's choice for this year, and she couldn't have picked a better show. It was performed before "standing-room-only" crowds on both nights.

During the Christmas season, the choir was, as usual, quite active. They caroled at many of the major hotels, Union Station, and also at the state hospital.

Every person of choir is proud to say he is a member of such a fine organization. It is the highest honor one can receive in the vocal music field at Southwest.



Row One: B. Stoepelman, D. Krauss, K. Gieck, K. Walsh, M. Revele, M. Clamors, S. Schofield, B. Smith, S. Chapman, T. Turk, L. Clark, P. Marks, F. Lampros, K. Featherstone, C. Holzer, B. Schnyder.
Row Two: J. Boaz, J. Lambert, S. Faulkner, C. Ohsiek, A. Hanson, J. McIntosh, L. Wiesehan, M. Milford, M. Connley, B. Biggar, J. VanFossan, M. Robinson, J. Sientop, A. Herzog, C. Hartmann, S. Kinest, J. Eckhoff, D. Krauss.
Row Three: B. Martin, D. Colvin, S. Britton, D. Bloomquist, S. Sisk, N. Steinmann, K. Heggen, S. McMillian, L. Dembeck, B. Holtmann, M. Bonacorsi, M. Spielloch, J. Glass, M. Harriss, S. Rupert, F. Purdy, M. Koverly, R. Graves, D. Shimamoto.
Row Four: J. Parks, B. Sherman, M. Melton, C. Rolufs, B. Siegfried, C. Timpone, C. Hohenberger, C. Grasel, S. Fletcher, C. Spellmeyer, B. Barrow, M. Spudich, J. Kinnard, A. Lutz, S. Ingerbritsen, J. Krost, D. Schoenbeck, C. Linhart, E. Sachan, B. Mason, D. Olson.
Row Five: E. Hewlett, R. Walkenhorst, K. Tacony, B. Wagoner, M. Wofford, B. Bays, B. Pflueger, J. Clark, L. Olmstead, J. Gormly, J. Favignano, D. Dodge, L. Emling, S. Rishheim, M. Moisio, N. Filippello, B. Frimel, G. Schonaerts, L. Wills, J. Hess.