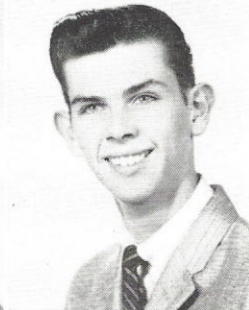


STEPHEN CHARLES GOSSETT (Steve)

"B" Football, '56; Freshman Aud, '57; Scholastic Art Award, '58; Boys' Bowling, '58-'59.

RICHARD J. GREEN (Rich)

"B" Football, '55; May Musicale, '56; Boys' Glee, '56; Track, '56-'57-'58-'59; Varsity Football, (Co-Captain), '56-'57-'58; Lettermen's Club (Sergeant-at-Arms, Treasurer), '56-'57-'58; Advanced Chorus (President), '58; Operetta, '58; Miss SW Escort, '58.

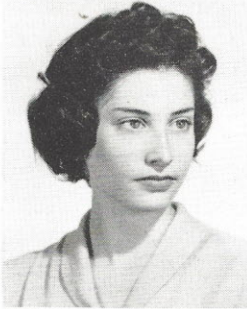


ELEANOR GUALDONI (El)

Cheerleaders' Club, '55; Pep Club, '55; Hora Latina, '55-'56; G. A. A., '56; Roundup Salesman, '56; Advanced Chorus, '56-'57; May Musicale, '56-'57; Christmas Program, '56-'57; Operetta, '56-'57; Student Council (Representative, Alternate), '56-'57; Pioneer Salesman, '56-'57; Student Registrar, '57; Bowling Club, '58; Senior Play, (Committee), '58.

JAMES HAMEL (Jim)

Boys' Glee, '57-'58-'59 (Secretary, Vice-President; Operetta, '57-'58; Radio Workshop, '57-'58; Boys' Bowling, '58 (Capt.))

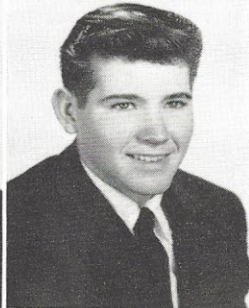
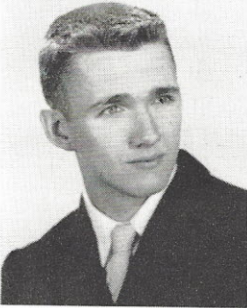


JACQUELINE E. HARRIS (Jackie)

Advance Chorus, '56-'57; May Musicale, '56-'57; Christmas Aud, '56-'57; Operettas, '56-'57-'58; Girls' Glee, '58; Red Cross Sewing, '58; Music Letter, '58.

JERRY C. HESS

"B" Football, '55-'58; Audubon Club, '55-'56; Adv. Chorus, '55-'56-'57-'58 (Vice-President) Boys' Glee, '55-'58; Operetta, '55-'56-'57-'58; May Musicale, '55-'56-'57-'58.



EDWARD HEYMANN (Ed)

Band, '55; Operetta, '56; Lettermen's Club, '56-'59; Golf, '56-'59; Spring Festival, '58; Advanced Chorus, '58.

JERRY DEAN HILL

GLENN HOFFMEISTER

Pan American Club, '55; Tax Election, '55; Jr. Red Cross Art, '55-'56; Pioneer Salesman, '55-'58; Student Council (Alternate), '55-'58; Projectionists' Club, '56-'58; Chess Club, '57; Track, '57; Boys' Bowling, '57-'58; Roundup Salesman, '58.



BARBEL HOLTSMANN (Barb)

Student Council, '55-'56; Sr. Chaminade, '55-'56; Pep Club, '56; (Soldan); Library Staff, '56; German Club (Vice-President), '56; Freshman Aud, '56; Hora Latina, '56-'57; Band Benefit, '56-'57; National Poetry Anthology, '56-'58; Girls' Glee, '57; Washington University Honors Day, '57; Operetta, '57-'58; May Musicale, '57-'58; A Cappella Choir, '57-'58; Pioneer (Assistant News Editor, Co-Editor), '57-'58; G. A. A., '57-'58; Girls' Basketball (Captain), '57-'58; Advanced Chorus, '58; Student Registrar, '58; Senior Play (Properties Committee), '58; Voice of Democracy Contest (School Winner), '58; Girls' Bowling Club, '58; Girls' Volleyball, '58; Hello Day, '58; Open House, (Speaker) Certificate of Merit, '58.