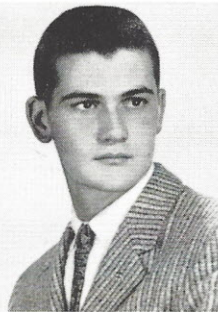
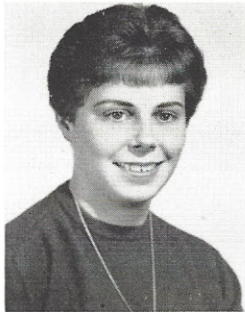


CAROLE ELAINE PETERSEN
(Pete)

Junior Red Cross, (Art), '55-'56; Pep Club, '55-'56; Cheerleaders' Club, '55-'56; Stamp and Bonds, '55-'59; Certificate of Merit, (Art), '56; G. A. A. Basketball, '56; May Musicales, '57-'58; Operetta, '57-'58; Christmas Program, '57; Advanced Chorus, '57-'59; Roundup, (Art), '58.

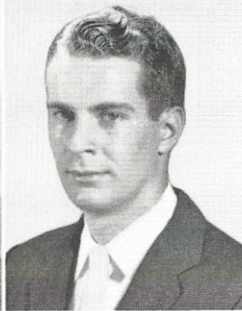
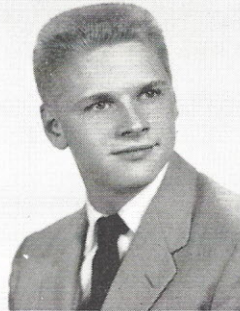


JOHN C. PISONI (Paesan)

Audubon Club, (Statistician), '55; Freshman Aud, '56; Certificate of Merit (Art), '56-'57; Rifle Club, '56-'57; Hora Latina, '57; Hello Day, '57; Band Benefit, '57; Senior Play, '58; Certificate of Recognition, '58; Roundup Art, '58; Mizzou Curators, '57.

DENNIS POTTER

Operetta, '55; Boys' Glee, '55-'56; May Musicales, '55-'56; Youth Conference, '56; Tennis (Alternate), '56; Roundup Art Work, '57; Student Council, '58.

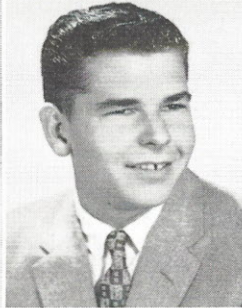


THOMAS R. PRATT (Tom)

French Club, '55; Rifle Club, '55-'56; May Musicales, '56; Advanced Chorus, '56; Mother's Day Program, '56; Senior Play Committee, '58; Graduation Usber, '58; Spring Dance Committee, '58; Annapolis Appointment, '58.

LAURA JOSEPHINE PROSSER

Christmas Aud, '56-'58; Jr. Red Cross Sewing, '57; Advanced Chorus, '57-'58; P. T. A., '58.



FREDERICK CHARLES REINHOLD (Fred)

Enumeration, '55; P. T. A. Meeting (Tumbled), '55; Rifle Club, '57; Radio Workshop, '57-'58.

MARY ELIZABETH REVELLE
(Mary)

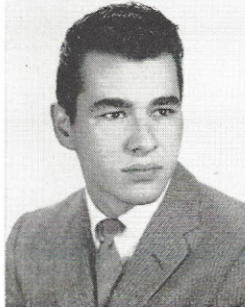
Advanced Chorus, '55; Officials Club, '55; French Club (Secretary), '55-'57; Christmas Program, '55-'58; G. A. A., '55-'58; Pioneer Salesman, '56-'58; Bowling Club (Trophy), '56-'59; Modern Dance, '57; Pep Club, '57; Poetry Anthology, '57; Student Council Committees, '57-'58; Student Council (Treasurer), '57-'59; Freshman Welcoming, '58; Hello Day Committee, '58; National Association of Student Council (Delegate), '58; Open House, '58; Senior Play (Prop Chairman), '58; Operetta, '58; Curator Award, '58; Freshman Mothers Club (Speaker), '58; A Cappella Choir, '58-'59; Choir Activities, '58-'59.



JOHN REYNOLDS (Jack)

ROBERT DANIEL RIFE (Bob)

Student Council (Alternate), '55; Freshman Aud, '55; Orchestra, '55-'56; Operetta, '55-'56; Spring Festival, '55-'56; Christmas Aud, '55-'56; Hello Day, '55-'57; Roundup Salesman, '55-'57; Open House, '56; Miss SW Dance, '56; Senior Play, '56; May Musicales, '56; Brotherhood Aud, '57; Band Benefit, '57; Intergroup Youth Conferenee, '57; Washington U. High School Honors Day, '57.



MARY ANN SAVOLDI

Jr. Girls' Glee, '55; Operetta, '55; May Musicales, '56-'57; Adv. Chorus, '56-'57; Jr. Red Cross Sewing, '57-'58.