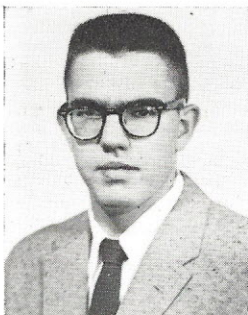


AMANN



ASHE



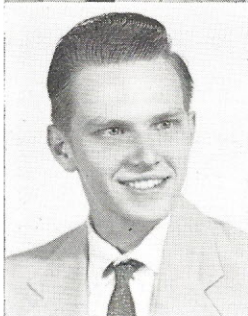
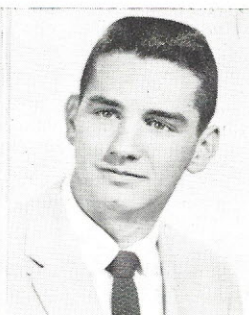
BACKER



BADAGLIACCO



BAKER



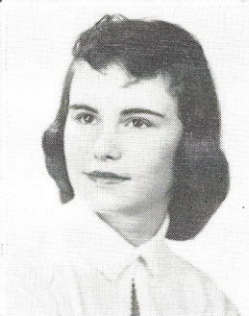
BANTE



BAUER



BAUMAN



BAY



BLANCHFIELD

ARNOLD AMANN (Army)

MARILYN ASHE

Freshman Aud, '55; P.T.A. Program, '55; Pan-American Club (Secretary), '56-'59; Student Council, '55-'59; Pioneer Salesman, '55-'59; Stamp and Bond Salesman, '57-'59; Special Service, '58-'59; Student Registration, '58-'59; Intergroup Youth Conference, '58-'59; Girls' Glee Club, '58-'59; Brigadoon Operetta, '58.

PATRICIA BACKER (Pat)

Girls' Glee Club, '55; Volleyball, '55-'56; Pep Club (Secretary), '56; Advanced Chorus, '57-'58; (Northwest High School); G.A.A., '57; Christmas Aud, '57-'58; Spring Festival, '58.

ALICE BADAGLIACCO (Jackie)

G.A.A., '56-'59; Operetta, '56-'57; Pep Club, '57-'58; Bowling Club, '57-'59; Advanced Chorus, '57-'58; Spring Festival, '57-'58; Future Nurses Club, '57; Junior Red Cross Sewing, '57; Cheerleaders' Club, '57-'58; Dramatics, '58-'59.

BRENT BAKER

Rifle Club, '55-'56; Student Council (Executive Member), '55-'59; Band (Letter), '55-'59; Orchestra (Letter), '55-'59; Spring Festival, '55-'59; Operetta (Principal), '55-'59; Band Benefit, '55-'58; Miss Southwest Dance, '55-'58; Pioneer Salesman, '55-'57-'59; Instrumentals, '55-'59; Hora Latina, '56-'57; Mid-American Jubilee, '56; Hello Day, '56-'59; Freshman Welcoming Committee, '56-'59; Registrar, '56-'57; Clef and Quaver, '57-'59; Dramatics, '57-'58; Physics Club, '57-'58; Sciences Fair, '58; Boys' State (City Attorney, Speaker of House), '58; American Legion Oratorical Contest (District Semi-Finals Winner), '58; Radio Workshop, '58-'59; Track, '58-'59; Cross-Country (Letterman), '58; Roundup Staff (Administration and Graduates Section), '58-'59; Lettermen's Club, '58-'59; Inter-Group Youth Conference, '59; Senior Play (Principle) '59; K.S.L.H., '59.

GENE BANTE

Advanced Chorus, '57-'58; Operettas, '57-'58; Christmas Program, '57-'58; May Musicale, '57-'59; P.T.A. Meeting, '58; Physics Club, '58; Boys' Glee Club, '59.

DEANNA BAUER (De)

German Club, '55; Pepettes, '55; Carol Club, '56; Office Work, '56; Roosevelt Bowling Club, '58; Junior Achievement, '58.

PATRICIA L. BAUMAN (Patti)

Foreign Language Play, '55; French Club, '55-'57; Stamps and Bond Salesman, '55-'59; Mid-American Jubilee, '56; National Anthology Poetry Contest, '57-'58; Bowling Club, '57-'59; Student Registration, '57-'59; Science Fair (Gold Seal), '58; Washington Trip, '58; Girls' Glee, '58; Operetta, '58; P.T.A. Dance Program, '59; Advanced Chorus, '59.

CLAUDIA BAY

Cheerleaders' Club, '55-'56; Pep Club, '55-'56; Advanced Chorus, '57-'58; May Musicale, '57; Freshman Aud, '58; Operetta, '58; Christmas Program, '58; G.A.A. Basketball (1st Place), '58; G.A.A. Volleyball, '59; Washington University Mock Trial, '58; Bowling (2nd place), '58-'59; Girls' Glee, '59.

FRANCIS EILEEN BLANCHFIELD (B. P. C.)

Junior Red Cross Sewing, '55; May Musicale, '55-'56; Advanced Chorus, '56; Freshman Aud, '58; Radio, '58-'59.