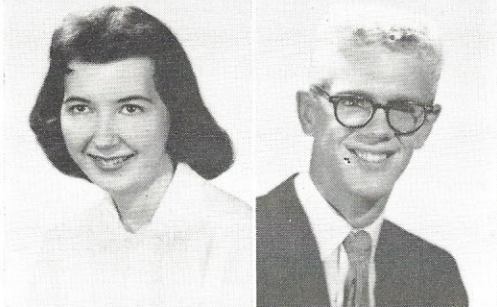


DENNIS DEVINE

"B" Football, '55; Baseball, '56-'57; Spanish Club, '56; (DuBourg).

EDWARD W. DEVINE

Special Service, '56; Library Staff, '57; Physics Club, '57-'58; Varsity Football Mgr., '58; Boys Bowling, '58-'59; Lettermen's Club, '59.

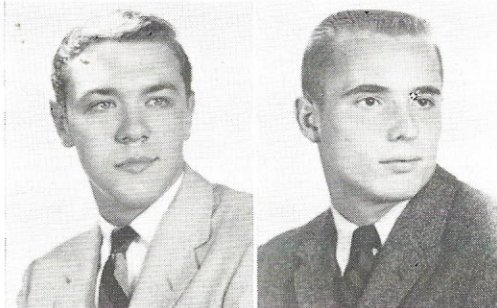


VERNETTA SUE DILLON

Future Teachers of America, '57; Bowling, '57-'59; Special Service, '59.

DAVID DODGE (Dave)

"B" Basketball, '55-'57; Track (Jr. Capt.), '56-'59; Boys' Glee, '57; Poppie Poem Contest, '57; Lettermen's Club, '57-'59; Choir, '57-'59; Operetta, '57-'58; Cross Country, '58; Clef & Quaver Club, '59; Student Council, '59; Physics Club, '59; Pioneer Salesman, '59; Roundup Salesman, '59.



DERRICK DODGE

Track, '55; Anthology Poem, '55; Hora Latina, '55-'57; Physics Club, '57-'58.

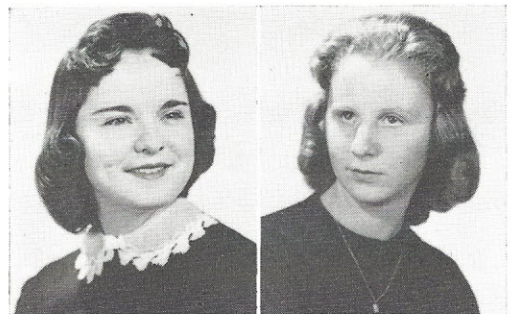
CRAIG DOETZEL (Brad)

Baseball, '55; Basketball, '55-'56; Football, '55-'56; Student Council, '56; Track, '56; Choir, '56; Band, '56; (Chaminade, Coral Gables, and Bayless High School); Baseball, '59.

BARBARA DOLAN

G.A.A., '56-'59; Spring Dance Committe, '57; Jr. Red Cross Sewing, '57; Advanced Chorus, '57-'59; Spring Festival, '57-'59; Freshman Aud, '58; Operetta, '58; P.T.A. Aud, '58; Christmas Aud, '58; Radio Work, '58-'59; Bowling Club, '58-'59; Officials Club, '59.

ROSWITHA DOEMOGALLA



ELIZABETH DOUGLAS (Beth)

Student Council, '56-'57; Operetta, '56-'58; Spring Festival, '57-'58; Christmas Program, '57-'58; Special Service, '57-'58; P.T.A. Aud, '58-'59.

HELEN DOWD

Bowling, '56-'59; Christmas Aud, '57-'58; Freshman Aud, '57; Girls' Glee, '57-'58; May Musicale, '58.

