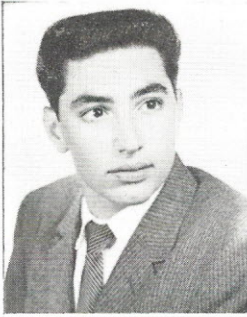


RIGGIO



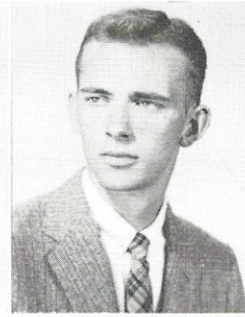
RISHEIM



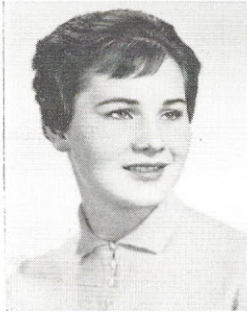
ROBINSON



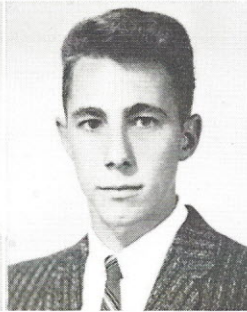
ROBINSON



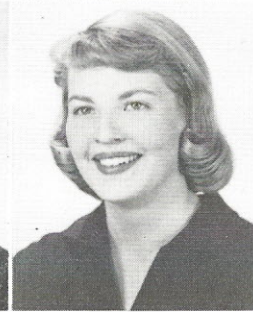
ROBINSON



ROMSCHECK



ROSA



ROSS



RUDOLPH



RUSSO

VINCE RIGGIO

Band, '55-'58; Mid-American Jubilee, '56; May Musicale, '56-'57; Freshman Aud, '56-'58; Radio Workshop, '58-'59; Hello Day, '59.

STEPHEN RISHEIM (Steve)

Band, '55; Latin Club, '56; Choir (Vice-President), (Letter) '57-'59; Boys' Glee (Letter), '57-'58; Physics Club, '57; Choir Activities, '57-'59; Roundup, '57-'59; Student Council (Alternate), '57; Early Risers, '58-'59; Advanced Chorus (Vice-President), '58-'59; Hello Day, '57-'58-'59; Operetta (Principal), '57-'58; Washington Trip, '58; Christmas Program, '58-'59; Special Service, '58-'59; Senior Play, '59.

BARBARA ROBINSON

Operetta, '55-'57; G.A.A., '56-'57; Receptionist Club, '56-'58; Junior Red Cross Sewing, '56; Hello Day, '57; French Club, '57-'58; Tennis Club, '57; Freshman Play, '58; Dramatics, '58-'59; Student Council, '59; Pioneer Salesman, '59; Roundup Salesman, '59.

CHARLES ED ROBINSON (Chuck)

"B" Basketball, '56; Operetta, '57-'58; Hello Day, '57; May Musicale, '57-'58; Boys' Glee, '57-'59; Roundup Salesman, '58; Student Council (Alternate), '58; Varsity Basketball, '58-'59.

MARCIA ROBINSON

Orchestra, '56-'57; Cheerleaders' Club, '56-'58; Photography Club, '56-'58; G.A.A., '56; All City Orchestra, '57; F.N.A., '58; Girls' Glee, '58; Choir, '58-'59; Inter-Youth Group Conference, '58; Spring Festival, '58; P.T.A. Program (Modern Dance), '58; Mock Trial, '58; Receptionist, '59; Pioneer (Page II Editor), '58-'59; Operetta, '59.

NORMA ROMSCHECK

Advanced Chorus, '57-'58; Special Service, '59; Girls' Bowling, '59.

THOMAS ROSA (Tom)

BARBARA ROSS

Latin Club (Secretary), '57-'58; Year Book Staff, '57-'58; Intra-School Club, '57-'58 (Anderson, Indiana); Basketball, '58; Miss SW Maid, '58; Pep Club, '58; G.A.A., '58-'59; Volleyball, '58-'59.

VALERIE CHRISTINE RUDOLPH (Val)

Foreign Language Christmas Aud, '55; Radio Literature Quiz, '56; German Club, '56; Pan-American Club, '56-'59; F.T.A. (Treasurer), '56-'59; Student Registration, '56-'59; Foreign Language Freshman Aud, '57; Roundup (Co-Editor), '57-'59; Television Income Tax Quiz, '59; High School Quiz Tournament (KTVI), (Captain), '59.

PATRICIA ANN RUSSO (Pat)

Freshman Language Aud, '55; Advanced Chorus, '56-'57-'59; Operetta, '56-'58; Christmas Aud, '56-'58; May Musicale, '57-'59; Dramatics, '57-'58; F.N.A., '58-'59; G.A.A., '58-'59; Radio, '58-'59; Girls' Glee, '58; Bowling Club, '59.