

# Class of 1960

## ELEANORE THOENE

Class Cabinet 4; *The Echo* 4; Cheerleader 1; Pep Club 1, 2, 3, 4; Tri Hi Y 1, 2, 3, 4; G.A.A. 3, 4; Hockey 1, 2; Basketball 1, 2, 3; Bowling 4; Volleyball 1, 2; Softball 1; Vespers 2, 4; Football Queen; Coronation.

## PATRICIA ANN THOMANN

Honor Graduate

Le Cercle Francais 3, 4; Pep Club 1, 2, 3, 4; F.T.A. 3, 4; Officials 3; Tri Hi Y 1, 2, 3, President 4; G.A.A. 2, 3, 4; Bowling 3, 4; Hockey 2, 3, Class 4; Basketball 1, 2, 3, 4; Volleyball 1, 2, Class 3, 4; Softball 2, Class 3.

## GARY THOMAS

## BARBARA SUE THOMPSON

Thirty Outstanding Seniors

Student Council 2, 3, 4; Guidance Council 4; Cheerleader 2, 3, 4; Pep Club 1, 2, 3, 4; Tri Hi Y 1, 2; G.A.A. 2, 3, 4; Basketball, Class 2, Varsity 3, 4; Volleyball, Class 2, Varsity 3; Officials 3; Coronation.

## GERALDINE ANN THORP

Honor Graduate

*The Echo* 4; Pep Club 1, 2, 3, 4; Conventus Latinus 2, 3; Tri Hi Y 1, 2, 3, 4; G.A.A. 2, 3, 4; Hockey 2, 3, Class 4; Basketball 1, 2, Class 3, 4; Volleyball 1, 2, Class 3, 4; Softball 1, 2, 3; Bowling 3, 4; Concessionaires 4.

## CAROL ELIZABETH THURMAN

*The Echo* 4; Pep Club 1, 2, 3, 4; Tri Hi Y 1, 2, 3, 4; G.A.A. 2, 3, President 4; Officials 3; Concessionaires 4; Bowling 3, 4; Hockey 1, Class 2, 4, Varsity 3; Basketball 1, 4, Class 2, Varsity 3; Softball 1, 2, Class 3, 4; A Cappella Choir 3, 4; *Sweethearts*; *Smash Hit*.

## GERALD ROBERT TIEMAN

Pep Club 1, 2; Conventus Latinus 3; Latinus Rumor 3; Concert Orchestra 2, 3, President 4; Dance Band 1, 2, 3, 4; Marching Band 1, 2, 3, President 4; Symphonic Band 1, 2, 3; Hi Y 3.

## TIMOTHY ROBERT TOWNSEND

Student Council 1; Symphonic Band 1, 2, 3; Marching Band 1, 2, 3, 4; Dance Band 1, 2, 3, 4; Concert Orchestra 1, 2, 3; Football 1, 2, 3, 4; Basketball 1, 2; Vespers 4.

## ROBERT HALE TRENHOLM

Varsity Club 4; Hi Y 1, 2, 3, President 4; Football 1, 2, 3, 4; Basketball 1, 2; Vespers 4.

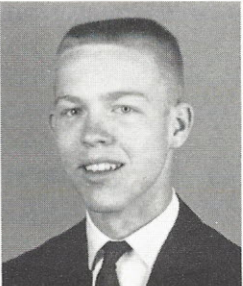
## THOMAS LEWIS TUBBESING

Math Club 4; Conventus Latinus 2; Varsity Club 4; Hi Y 1, 2, 3, 4; Football 1; Swimming 1, 2, 3, 4; A Cappella 2, 3, 4; *Sweethearts*; *Smash Hit*.

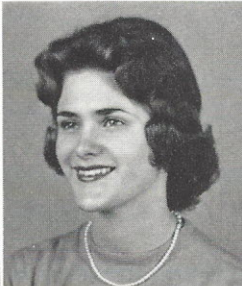
THOENE  
THOMANN



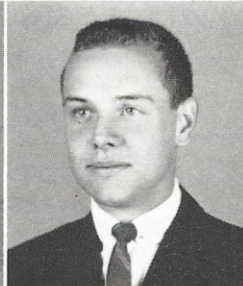
THOMAS  
THOMPSON



THORP  
THURMAN



TIEMAN  
TOWNSEND



TRENHOLM  
TUBBESING

