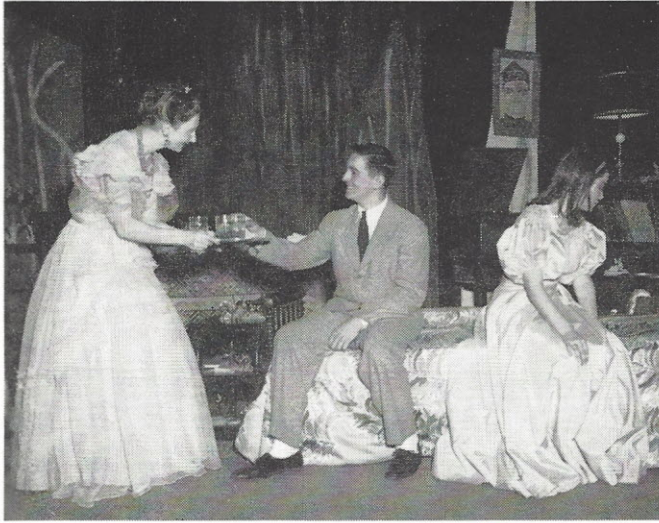


You are a good "trouser" Blanche Gonzalez



"The Glass Menagerie"



"The Clock Struck One"

Yacy L.A. Creed

Little Theatre Productions

Inimitable poetry is the keynote of **The Barretts of Wimpole Street** by Rudolf Besier. A woman, semi-invalid, lives in a boxed-in shadow but can nevertheless hold to herself an artistic soul and forceful character. She, Elizabeth Barrett, beacons out light through her poetry; and this attracts another poet, Robert Browning. The walls of her enclosure are strong, created by her father, a man obsessed with selfishly confining his eldest daughter. He clings neurotically to her companionship and thunders against any romantic relationships involving his domineered brood. Of course, he cannot stop all the possible leaks; as a result, after much soul-searching, Elizabeth and Robert embark from Wimpole Street and from gloomy England to Italy's golden light.

A shift from the mid-Victorian era to St. Louis of the middle 1930's is Tennessee Williams' **The Glass Menagerie**. Interior and lighting set the mood of this memory play, which is narrated by one of the four characters, the reflective son, Tom. His mother bases her definite shadings of right and wrong in life on customs of her Southern past in "Blue Moun-

tain." Her extremely withdrawn daughter Laura might be interpreted as even nurturing her slight limp and subconsciously using her shyness to reject the world, which in turn passes her by. Her long-prepared-for "Gentleman Caller" does arrive and brings Laura out somewhat. However, he is engaged and soon leaves her with a well-meant but freely bleeding amputation of her "peculiarity," as he has also accidentally broken the horn off the unicorn in her otherwise normal glass menagerie.

Bull in a China Shop, which Little Theater star, Sheila Lehr, calls a "morose, farcical little bagatelle," was also used on Alfred Hitchcock's television series. It is a half-mystery, half-comedy **tour de force** by C. B. Gilford, concerning a boarding house of spinsters. They are enamored of a neighboring detective, whom they love to spy on. To attract his attention and visits they kill off two of their sisters and send poisoned chocolates to a prospective girl friend. By this time their scheming is apparent to the detective, who switches departments from homicide to arson. The ladies' final stroke is obvious when the boarding house is enveloped in flames.