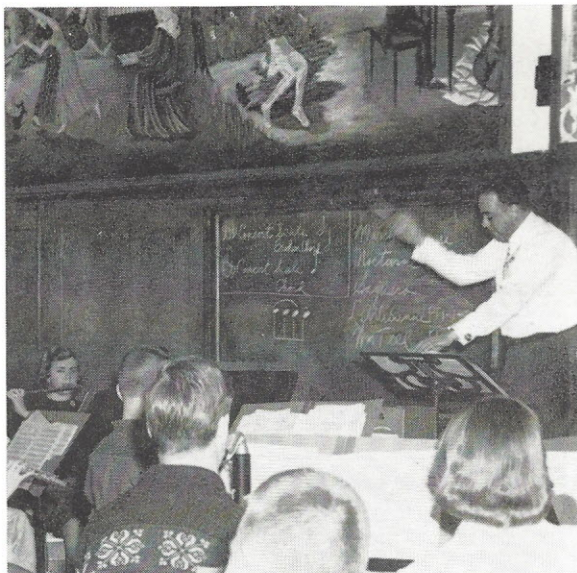


Louis County. Following in his father's footsteps, Mr. Henry Lemcke came to Webster High in 1953. The unique feature of this year was an open air concert held at Blackburn Park. 1955 brought with it our first Pops Concert. Something new for the band came again in 1957 when it made its first recording.

On the Thirty-fifth Anniversary of the Symphonic Band we can easily see its remarkable progress. This year the band presented two P.T.A. programs and its Sixth Annual Pops Concert featuring "Rhapsody in Blue" with guests, Nicolai Gogotzki, celebrated European conductor, and Hubbert Drury, pianist with "Jazz Central." Making a second record and participating in the Suburban Music Festival were also on the calendar. The big event of the year was the Thirty-fifth Annual Spring Concert, dedicated to Mr. James T. Hixson, who was principal of Webster in the year the band was begun. Since this time it has justly earned the reputation of one of the finest bands in the state.



Nice mural.

Concert Band

Tieman, Hickok, Leick, Reese, Hansen, Jones, Nolan, Molhenhoff, Jacobson, Birch, P. Wyman.

V. Wyman, Stalker, Wies, Bergman, Walters, Angelone, Earle Reeves, Lockier, Ernest Reeves, Townsend, Drake, Dittmer, Ward, Heuduck, Dodson, B. Mack, D. Schafer, Schroer, E. Detering, Cook, Fuller.

Ashley, Keiser, Crump, B. Schafer, French, McIntosh, Gaylor, Reed, Brooks, Gordon, Richardson, Robinson, Barrows, Jackson, Lewis.

Harrison, Sladek, Knaus, Nelson, Aldrich, Mr. Lemcke, Brock, N. Mack, S. Detering, Horton.

