




*Sure have enjoyed our Band days together! I'll miss you next year!  
Billie*

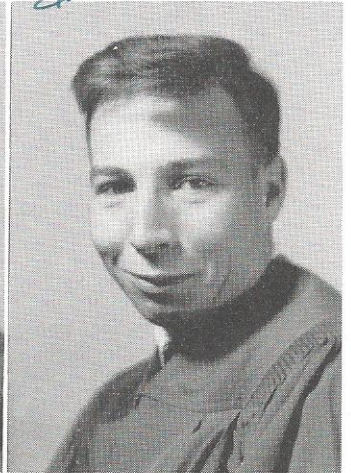


**BETTY DOPSON**

**MARIE DRAWDY**

Good company. . . J.H.A. 4,3,2,1; Glee Club 4; Dance Club 3; Travel Club (Pres.) 2.

Loves life. . . Music Club 4; Future Teachers 4,3; Dance Club 3; Party Planning Club (Sec.) 2; Spanish Club 2,1; Travel Club 1.

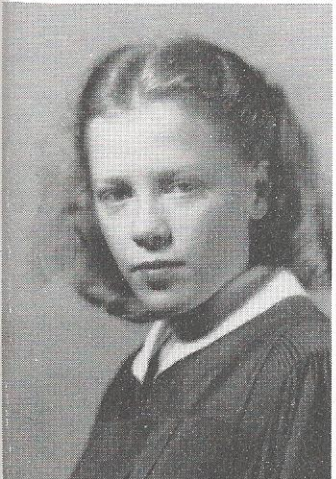


**BILLIE DUKES**

**LOUIE FENDER**

That giggle. . . Band 4,3,2,1; Future Teachers 4,3; Beta Club 4; Dance Club 3; Travel Club 2; Spanish Club 2; Glee Club 1; LAIR 4.

Good athlete. . . Football 4,3,2,1; Block W (Pres.) 4,3,2,1; Basketball 4,3,2; Baseball 3,2,1; Glee Club 4; Hi-Y 4,3; Sportsman's Club 3,2.



**SARA FENNEL**

**MARY SUE FICK**

Petit. . . J.H.A. (Pres.) 4,3,2, (Sec.) 1; Beta Club 4; Student Council 3,2,1; Band 2,1; Dance Club 2; Dramatics Club 1.

Soft spoken. . . Transferred from Fayetteville, N. Y., 1949; Student Council 4; Beta Club 4,3; Class Treasurer 4; WILDCAT (Co-Editor) 4,3; LAIR (Business Manager) 4; Future Teachers (Pres.) 4,3.



**HELEN FLOYD**

**MAXINE FLOYD**

Chatterbox. . . D.E. Club 4,3; J.H.A. 2,1; Dance Club 2; Bible Club 2; 4-H 1.

Friendly smile. . . Book Club 4; D.E. Club (Sec.) 3; Bible Club 2,1.