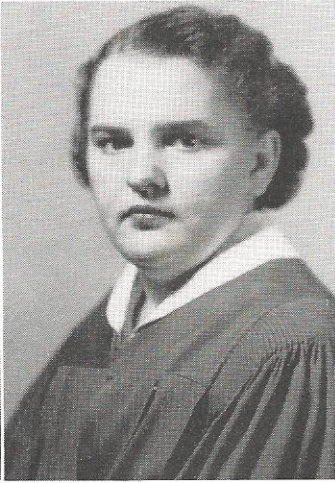


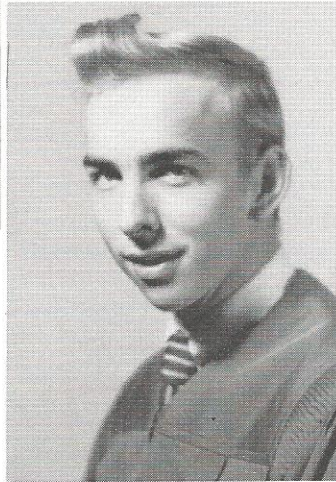
**NANCY HIOTT**

Real nice. . . Glee Club 4,3,2,1; J.H.A. 4,3,2; Dance Club 2; Travel Club 1.



**RUTH HUDSON**

Talkative. . . Transferred from Smoaks High; Glee Club 4.



**JACKSON HUGHES**

Complex personality. . . Football 4,3,2,1; D.E. 4; Hi-Y 4,3.



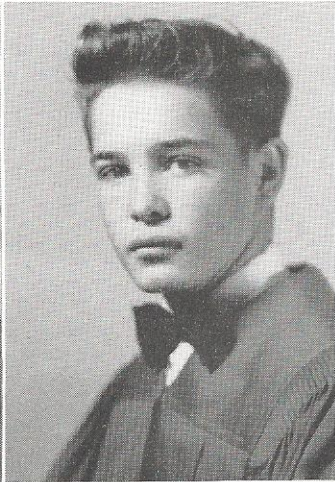
**JIMMY HUGHES**

Good leader. . . Class President 4,3,1; Football 4,3; Basketball 4,3,1; Block W Club 4; LAIR 4,2; Hi-Y (Pres.) 4,3; Glee Club 4,2; Debate 4,2; Future Teachers 3; Sportsman's Club (Sec.) 3; Photography Club 2; Student Council 2,1.



**MARTHA JANE HUTCHESON**

Quiet nature. . . Glee Club 4; Music Study Club 4; Dance Club 3.



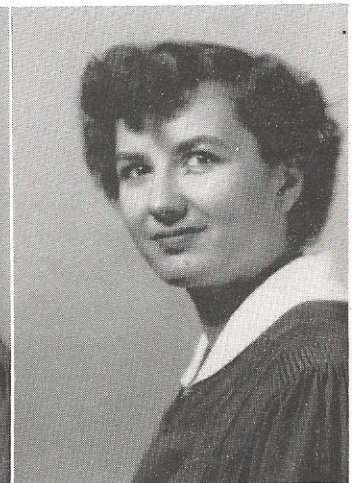
**CLYDE JOHNSON**

Sports fan. . . F.F.A. 4,3,2; Travel Club 3; Sportsman's Club 2; Baseball Manager 2.



**DELORES KINARD**

Misty eyes. . . Beta Club 4,3; Future Teachers 4,3; J.H.A. 3,2,1; Travel Club 3,2; President's Cabinet 3; Student Council 1.



**BARBARA LEE**

Joke out of everything. . . Cheerleader 4; LAIR 4; Music Club (Pres.) 4; Dance Club 3; Travel Club 3; Pan-American Club 2; Glee Club 1; Manager of Basketball 4.